

ARTICOLO DISTRIBUITO DA



Articoli Tecnici Trasmissioni Industriali

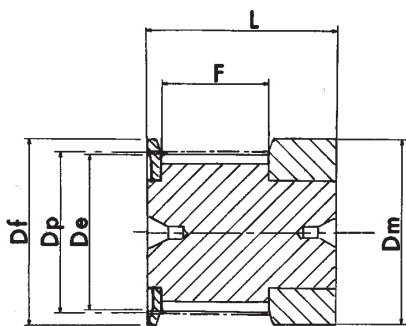
Via F.lli Cervi n°3
20063 CERNUSCO SUL NAVIGLIO
Tel .02-92106954 - 6 LINEE R.A.
Fax.02-92107261
E-mail info@atti.it
Sito: www.atti.it



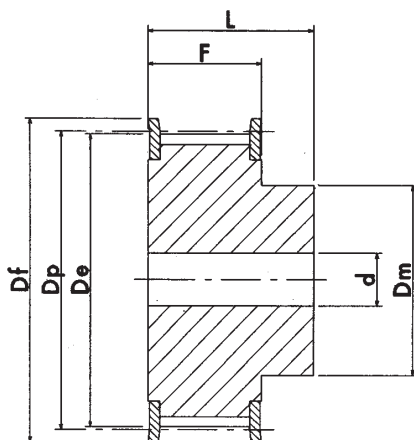
- *MOTORI ASINCRONI*
- *MOTORI IN C.C.*
- *MOTORI A MAGNETI PERMANENTI*
- *MOTORI PASSO PASSO*
- *MOTORI BRUSHLESS*
- *MOTORIDUTTORI*
- *MOTOVARIATORI*
- *MARTINETTI*
- *ATTUATORI*
- *RINVII ANGOLARI*
- *LIMITATORI DI COPPIA*
- *PULEGGE A GOLE*
- *PULEGGE DENTATE*
- *PULEGGE CON BUSSOLE TAPER LOOK*
- *PULEGGE VARIABILI*
- *CINGHIE TRAPEZOIDALI*
- *CINGHIE DENTATE*
- *CINGHIE PER VARIATORI*
- *CATENE VARIE*
- *PIGNONI PER CATENE*
- *INGRANAGGI A MODULO*
- *CREMAGLIERE*
- *COPPIE CONICHE*
- *GIUNTI VARI*
- *SUPPORTI AUTOALLINEANTI*
- *SLITTE VARIE*
- *SLITTE MOTORIZZABILI*
- *RUOTE*
- *CALETTATORI*
- *MANIGLIERIA ELESA*
- *VITI T.P.N. E RELATIVE CHIOCCIOLE*
- *VITI A RICIRCOLAZIONE DI SFERE*
- *AZIONAMENTI BRUSHLESS, IN C.C. A TRANSISTOR, MOSFET, SCR, ECC.*
- *INVERTERS - SOFT START*
- *ENCODERS*
- *RIGHE OTTICHE*
- *ELETTROMAGNETI*
- *VISUALIZZATORI - POSIZIONATORI*
- *INTERPOLATORI - MISURATORI - TACHIMETRI - VOLMETRI - TEMPORIMETRI*
- *P L C E LOGICHE PROGRAMMABILI CON RELAZIVA PROGRAMMAZIONE PERSONALIZZATA*
- *QUADRI ELETTRICI*
- *RULLI E RELATIVI COMPONENTI*
- *ASPIRATORI E VENTILATORI*
- *PROFILATI IN ALLUMINIO*
- *ADESIVI INDUSTRIALI*
- *SISTEMI DI LUBRIFICAZIONE CENTRALIZZATA*

Realizzazione di trasportatori e macchine speciali con profilati di alluminio

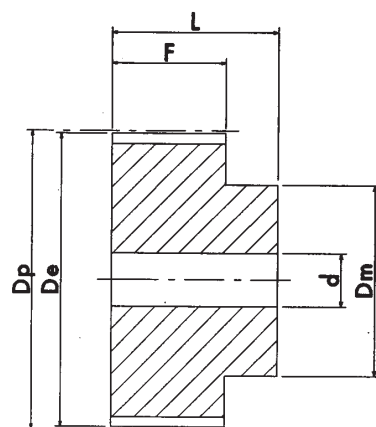
PULEGGE DENTATE POWER GRIP® PER CINGHIE POSITIVE



esecuzione 0F



esecuzione 1F

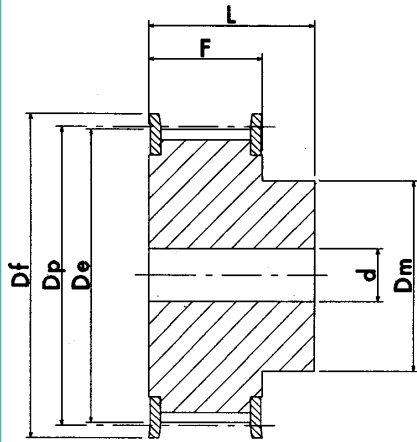


esecuzione 2

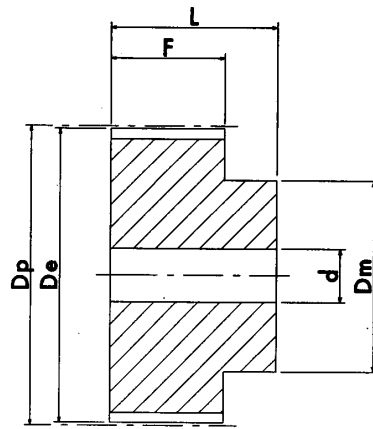
MXL 025 PASSO 0,080" (mm 2,032)

CARATTERISTICHE	TIPO	ESEC	N° DENTI	Dp PRIMITIVO	De ESTERNO	Df FLANGIA	Dm MOZZO	F	L	d	N° FLANGIA		
ALLUMINIO	CON FLANGIA	16 MXL 025	16	10,35	9,84	15	15	8,5	16	-	502		
		18 MXL 025	18	11,64	11,12	16	16	8,5	16	-	503		
		20 MXL 025	20	12,94	12,43	16	16	8,5	16	-	503		
		22 MXL 025	22	14,23	13,72	17	10	11	16	3	504		
		24 MXL 025	24	15,52	15,01	20	10	11	16	3	505		
		28 MXL 025	28	18,11	17,60	25	11	11	16	3	506		
		30 MXL 025	30	19,40	18,90	25	12	11	16	4	506		
		32 MXL 025	32	20,70	20,19	26	14	11	16	4	507		
		36 MXL 025	36	23,29	22,78	28	16	11	16	4	508		
		40 MXL 025	40	25,87	25,37	32	18	11	16	4	509		
		42 MXL 025	42	27,17	26,67	32	18	11	16	5	509		
		44 MXL 025	44	28,46	27,95	36	18	11	16	5	510		
		SENZA FLANGIA	48 MXL 025	2	48	31,05	30,54	-	20	11	16	5	-
			60 MXL 025	2	60	38,81	38,30	-	24	11	16	5	-
			72 MXL 025	2	72	46,57	46,06	-	25	11	16	6	-

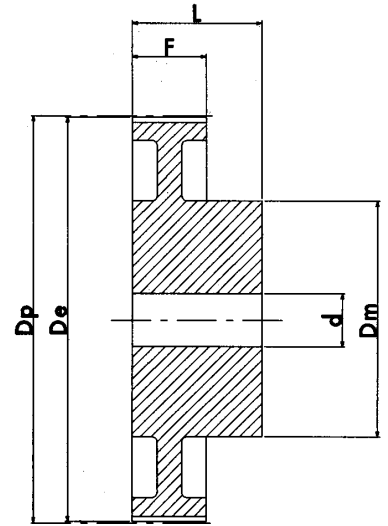
PULEGGE DENTATE POWER GRIP® PER CINGHIE POSITIVE



esecuzione 1F



esecuzione 2

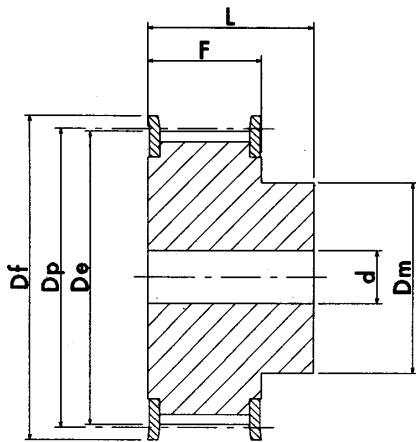


esecuzione 3

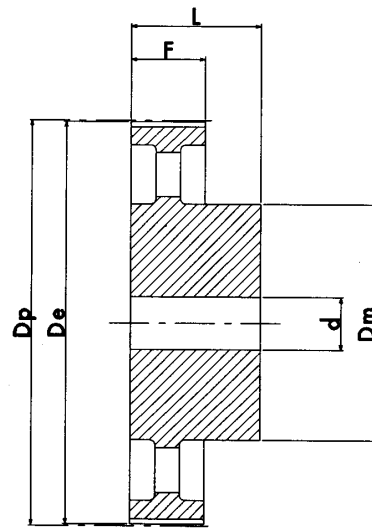
XL 037 PASSO 1/5" (mm 5,08)

CARATTERISTICHE	TIPO	ESEC	N° DENTI	Dp PRIMITIVO	De ESTERNO	Df FLANGIA	Dm MOZZO	F	L	d	N° FLANGIA	
ACCIAIO/ALLUMINIO	CON FLANGIA	10 XL 037	1F	10	16,17	15,66	23,0	9,5	14,3	20	-	1
		11 XL 037	1F	11	17,79	17,28	23,0	9,5	14,3	20	-	1
		12 XL 037	1F	12	19,40	18,90	25,0	10	14,3	20	-	2
		13 XL 037	1F	13	21,02	20,51	25,0	10	14,3	20	-	2
		14 XL 037	1F	14	22,64	22,13	28,0	15	14,3	20	-	4
		15 XL 037	1F	15	24,26	23,75	28,0	15	14,3	20	-	4
		16 XL 037	1F	16	25,87	25,36	32,0	16	14,3	20	-	5
		17 XL 037	1F	17	27,49	26,98	32,0	20	14,3	20	-	6
		18 XL 037	1F	18	29,11	28,60	35,0	20	14,3	20	-	7
		19 XL 037	1F	19	30,72	30,22	35,0	20	14,3	22	-	7
		20 XL 037	1F	20	32,34	31,83	38,0	23,5	14,3	22	-	9
		21 XL 037	1F	21	33,96	33,45	38,0	23,5	14,3	22	-	9
		22 XL 037	1F	22	35,57	35,07	41,0	25	14,3	22	6	10
		24 XL 037	1F	24	38,81	38,30	44,0	30	14,3	22	6	12
		26 XL 037	1F	26	42,04	41,53	48,0	30	14,3	22	8	11
		27 XL 037	1F	27	43,66	43,15	48,0	30	14,3	22	8	11
		28 XL 037	1F	28	45,28	44,77	51,0	34	14,3	22	8	16
		30 XL 037	1F	30	48,51	48,00	54,0	38	14,3	22	8	18
		32 XL 037	1F	32	51,74	51,24	57,0	38	14,3	25	8	20
		34 XL 037	1F	34	54,98	54,47	61,0	38	14,3	25	8	22
35 XL 037	1F	35	56,60	56,09	61,0	38	14,3	25	8	22		
ALLUMINIO	SENZA FLANGIA	36 XL 037	2	36	58,21	57,70	-	45	14,3	25	8	-
		38 XL 037	2	38	61,45	60,94	-	45	14,3	25	8	-
		40 XL 037	2	40	64,68	64,17	-	45	14,3	25	8	-
		42 XL 037	2	42	67,91	67,41	-	45	14,3	25	8	-
		44 XL 037	2	44	71,15	70,64	-	45	14,3	25	8	-
		48 XL 037	3	48	77,62	77,11	-	45	14,3	25	10	-
		60 XL 037	3	60	97,02	96,51	-	45	14,3	25	10	-
		72 XL 037	3	72	116,42	115,92	-	45	14,3	25	10	-

PULEGGE DENTATE POWER GRIP® PER CINGHIE POSITIVE



esecuzione 1F

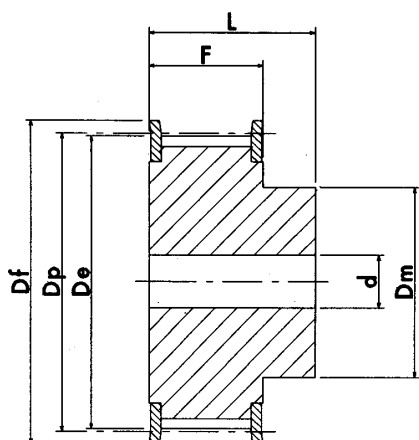


esecuzione 4

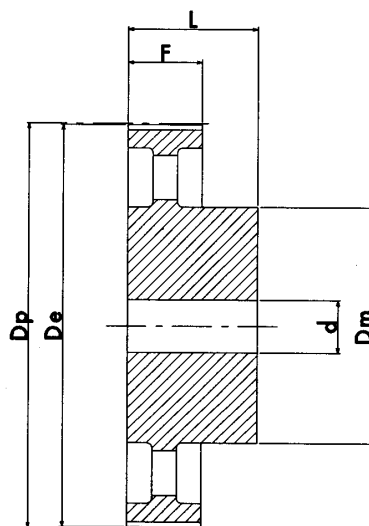
L 050 PASSO 3/8" (mm 9,52)

CARATTERISTICHE	TIPO	ESEC	N° DENTI	Dp PRIMITIVO	De ESTERNO	Df FLANGIA	Dm MOZZO	F	L	d	N° FLANGIA	
ACCIAIO	CON FLANGIA	10 L 050	1F	10	30,33	29,56	37,00	20	19,0	28	8	50
		11 L 050	1F	11	33,35	32,59	37,00	22	19,0	30	8	50
		12 L 050	1F	12	36,37	35,62	43,00	24	19,0	30	8	52
		13 L 050	1F	13	39,41	38,65	44,00	28	19,0	30	8	83
		14 L 050	1F	14	42,44	41,68	48,00	28	19,0	30	8	54
		15 L 050	1F	15	45,48	44,72	51,00	34	19,0	30	8	55
		16 L 050	1F	16	48,51	47,75	54,00	36	19,0	32	8	56
		17 L 050	1F	17	51,54	50,78	57,00	36	19,0	32	10	57
		18 L 050	1F	18	54,59	53,81	60,00	40	19,0	32	10	58
		19 L 050	1F	19	57,61	56,84	64,00	40	19,0	32	10	59
		20 L 050	1F	20	60,63	59,88	66,50	40	19,0	32	10	60
		21 L 050	1F	21	63,68	62,91	70,00	45	19,0	32	10	61
		22 L 050	1F	22	66,70	65,94	75,00	45	19,0	32	10	62
		23 L 050	1F	23	69,73	68,97	79,00	55	19,0	32	10	63
		24 L 050	1F	24	72,77	72,00	79,00	55	19,0	32	10	63
		25 L 050	1F	25	75,80	75,04	82,50	58	19,0	32	10	64
		26 L 050	1F	26	78,84	78,07	86,00	58	19,0	32	11	65
		27 L 050	1F	27	81,86	81,10	86,00	58	19,0	32	11	65
		28 L 050	1F	28	84,89	84,13	91,00	58	19,0	32	11	66
		30 L 050	1F	30	90,96	90,20	97,00	70	19,0	32	11	68
		32 L 050	1F	32	97,03	96,26	102,00	70	19,0	32	11	70
		33 L 050	1F	33	100,05	99,29	106,00	70	19,0	32	11	71
		34 L 050	1F	34	103,08	102,32	112,00	70	19,0	32	11	72
		35 L 050	1F	35	106,12	105,35	112,00	70	19,0	32	11	72
36 L 050	1F	36	109,14	108,39	115,00	70	19,0	32	11	74		
40 L 050	1F	40	121,29	120,51	128,00	70	19,0	32	11	78		
42 L 050	1F	42	127,34	126,57	135,00	70	19,0	32	11	80		
44 L 050	1F	44	133,40	132,64	142,00	70	19,0	32	11	81		
45 L 050	1F	45	136,44	135,67	142,00	70	19,0	32	11	81		
48 L 050	1F	48	145,54	144,77	150,00	70	19,0	32	11	85		
GHISA	SENZA FLANGIA	50 L 050	4	50	151,60	150,83	-	70	19,0	32	14	-
		52 L 050	4	52	157,66	156,90	-	70	19,0	32	14	-
		56 L 050	4	56	169,79	169,02	-	70	19,0	32	14	-
		57 L 050	4	57	172,82	172,06	-	70	19,0	32	14	-
		60 L 050	4	60	181,92	181,15	-	75	19,0	42	14	-
		72 L 050	4	72	218,29	217,53	-	75	19,0	42	14	-
		84 L 050	4	84	254,69	253,92	-	75	19,0	42	14	-
		96 L 050	4	96	291,06	290,30	-	75	19,0	42	14	-

PULEGGE DENTATE POWER GRIP® PER CINGHIE POSITIVE



esecuzione 1F

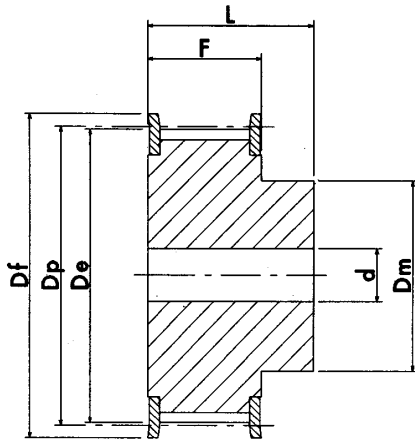


esecuzione 4

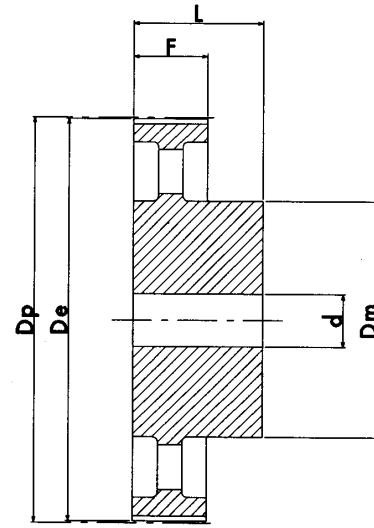
L 075 PASSO 3/8" (mm 9,52)

CARATTERISTICHE	TIPO	ESEC	N° DENTI	Dp PRIMITIVO	De ESTERNO	Df FLANGIA	Dm MOZZO	F	L	d	N° FLANGIA	
ACCIAIO	CON FLANGIA	10 L 075	1F	10	30,33	29,56	37,0	20	25,4	38	8	50
		11 L 075	1F	11	33,35	32,59	37,0	22	25,4	38	8	50
		12 L 075	1F	12	36,37	35,62	43,0	24	25,4	38	8	52
		13 L 075	1F	13	39,41	38,65	44,0	28	25,4	38	8	83
		14 L 075	1F	14	42,44	41,68	48,0	28	25,4	38	11	54
		15 L 075	1F	15	45,48	44,72	51,0	34	25,4	38	11	55
		16 L 075	1F	16	48,51	47,75	54,0	36	25,4	38	11	56
		17 L 075	1F	17	51,54	50,78	57,0	36	25,4	38	11	57
		18 L 075	1F	18	54,59	53,81	60,0	40	25,4	38	11	58
		19 L 075	1F	19	57,61	56,84	64,0	40	25,4	38	11	59
		20 L 075	1F	20	60,63	59,88	66,5	40	25,4	38	11	60
		21 L 075	1F	21	63,68	62,91	70,0	45	25,4	38	11	61
		22 L 075	1F	22	66,70	65,94	75,0	45	25,4	38	11	62
		23 L 075	1F	23	69,73	68,97	79,0	55	25,4	38	11	63
		24 L 075	1F	24	72,77	72,00	79,0	55	25,4	38	11	63
		25 L 075	1F	25	75,80	75,04	82,5	58	25,4	38	11	64
		26 L 075	1F	26	78,84	78,07	86,0	58	25,4	38	11	65
		27 L 075	1F	27	81,86	81,10	86,0	58	25,4	38	11	65
		28 L 075	1F	28	84,89	84,13	91,0	58	25,4	38	11	66
		30 L 075	1F	30	90,96	90,20	97,0	70	25,4	38	11	68
		32 L 075	1F	32	97,03	96,26	102,0	70	25,4	38	11	70
		33 L 075	1F	33	100,05	99,29	106,0	70	25,4	38	11	71
		34 L 075	1F	34	103,08	102,32	112,0	70	25,4	38	11	72
		35 L 075	1F	35	106,12	105,35	112,0	70	25,4	38	11	72
		36 L 075	1F	36	109,14	108,39	115,0	70	25,4	38	11	74
		40 L 075	1F	40	121,29	120,51	128,0	70	25,4	38	11	78
		42 L 075	1F	42	127,34	126,57	135,0	70	25,4	38	11	80
		44 L 075	1F	44	133,40	132,64	142,0	70	25,4	38	11	81
45 L 075	1F	45	136,44	135,67	142,0	70	25,4	38	11	81		
48 L 075	1F	48	145,54	144,77	150,0	70	25,4	38	11	85		
GHISA	SENZA FLANGIA	50 L 075	4	50	151,60	150,83	-	70	25,4	38	14	-
		52 L 075	4	52	157,66	156,90	-	70	25,4	38	14	-
		56 L 075	4	56	169,79	169,02	-	70	25,4	38	14	-
		57 L 075	4	57	172,82	172,06	-	70	25,4	38	14	-
		60 L 075	4	60	181,92	181,15	-	75	25,4	45	14	-
		72 L 075	4	72	218,29	217,53	-	75	25,4	45	14	-
		84 L 075	4	84	254,69	253,92	-	75	25,4	45	14	-
		96 L 075	4	96	291,06	290,30	-	75	25,4	45	14	-

PULEGGE DENTATE POWER GRIP® PER CINGHIE POSITIVE



esecuzione 1F

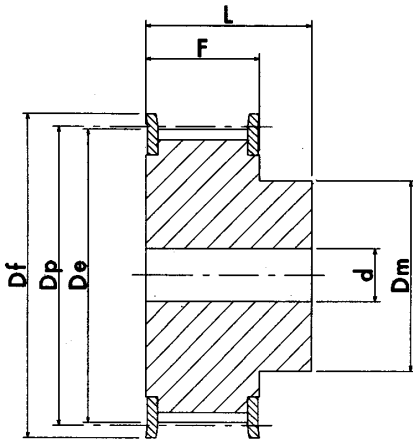


esecuzione 4

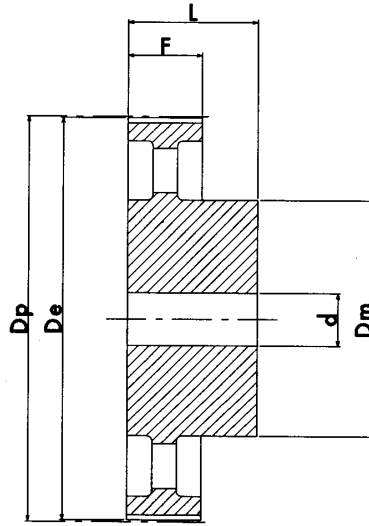
L 100 PASSO 3/8" (mm 9,52)

CARATTERISTICHE	TIPO	ESEC	N° DENTI	Dp PRIMITIVO	De ESTERNO	Df FLANGIA	Dm MOZZO	F	L	d	N° FLANGIA	
ACCIAIO	CON FLANGIA	10 L 100	1F	10	30,33	29,56	37,0	20	31,8	45	8	50
		11 L 100	1F	11	33,35	32,59	37,0	22	31,8	45	8	50
		12 L 100	1F	12	36,37	35,62	43,0	24	31,8	45	8	52
		13 L 100	1F	13	39,41	38,65	44,0	28	31,8	45	8	83
		14 L 100	1F	14	42,44	41,68	48,0	28	31,8	45	11	54
		15 L 100	1F	15	45,48	44,72	51,0	34	31,8	45	11	55
		16 L 100	1F	16	48,51	47,75	54,0	36	31,8	45	11	56
		17 L 100	1F	17	51,54	50,78	57,0	36	31,8	45	11	57
		18 L 100	1F	18	54,59	53,81	60,0	40	31,8	45	11	58
		19 L 100	1F	19	57,61	56,84	64,0	40	31,8	45	11	59
		20 L 100	1F	20	60,63	59,88	66,5	40	31,8	45	11	60
		21 L 100	1F	21	63,68	62,91	70,0	45	31,8	45	11	61
		22 L 100	1F	22	66,70	65,94	75,0	45	31,8	45	11	62
		23 L 100	1F	23	69,73	68,97	79,0	55	31,8	45	11	63
		24 L 100	1F	24	72,77	72,00	79,0	55	31,8	45	11	63
		25 L 100	1F	25	75,80	75,04	82,5	58	31,8	45	11	64
		26 L 100	1F	26	78,84	78,07	86,0	58	31,8	45	11	65
		27 L 100	1F	27	81,86	81,10	86,0	58	31,8	45	11	65
		28 L 100	1F	28	84,89	84,13	91,0	58	31,8	45	11	66
		30 L 100	1F	30	90,96	90,20	97,0	70	31,8	45	11	68
		32 L 100	1F	32	97,03	96,26	102,0	70	31,8	45	11	70
		33 L 100	1F	33	100,05	99,29	106,0	70	31,8	45	11	71
		34 L 100	1F	34	103,08	102,32	112,0	70	31,8	45	11	72
		35 L 100	1F	35	106,12	105,35	112,0	70	31,8	45	11	72
36 L 100	1F	36	109,14	108,39	115,0	70	31,8	45	11	74		
40 L 100	1F	40	121,29	120,51	128,0	70	31,8	45	11	78		
42 L 100	1F	42	127,34	126,57	135,0	70	31,8	45	11	80		
44 L 100	1F	44	133,40	132,64	142,0	70	31,8	45	11	81		
45 L 100	1F	45	136,44	135,67	142,0	70	31,8	45	11	81		
48 L 100	1F	48	145,54	144,77	150,0	70	31,8	45	11	85		
GHISA	SENZA FLANGIA	50 L 100	4	50	151,60	150,83	-	70	31,8	45	14	-
		52 L 100	4	52	157,66	156,90	-	70	31,8	45	14	-
		56 L 100	4	56	169,79	169,02	-	70	31,8	45	14	-
		57 L 100	4	57	172,82	172,06	-	70	31,8	45	14	-
		60 L 100	4	60	181,92	181,15	-	75	31,8	45	14	-
		72 L 100	4	72	218,29	217,53	-	75	31,8	45	14	-
		84 L 100	4	84	254,69	253,92	-	75	31,8	45	14	-
		96 L 100	4	96	291,06	290,30	-	75	31,8	45	14	-

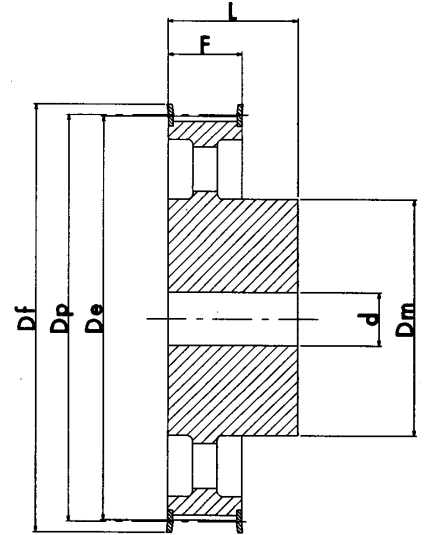
PULEGGE DENTATE POWER GRIP® PER CINGHIE POSITIVE



esecuzione 1F



esecuzione 4

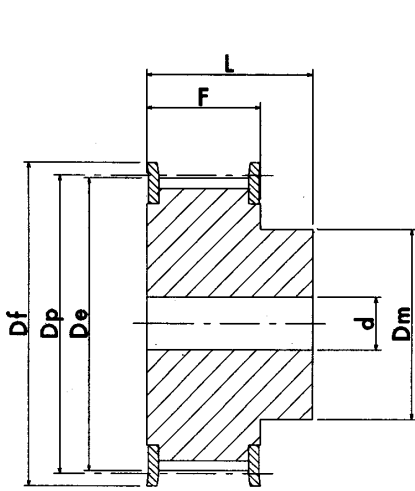


esecuzione 5F

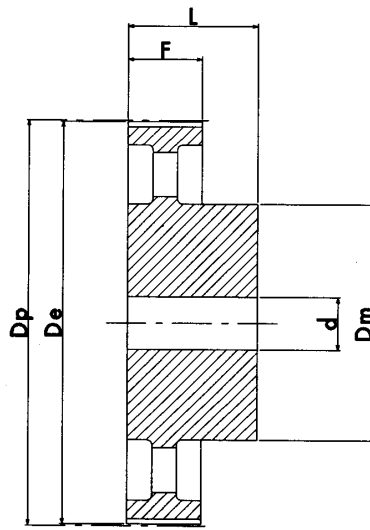
H 075 PASSO 1/2" (mm 12,7)

CARATTERISTICHE	TIPO	ESEC	N° DENTI	Dp PRIMITIVO	De ESTERNO	Df FLANGIA	Dm MOZZO	F	L	d	N° FLANGIA
ACCIAIO	CON FLANGIA	14 H 075	14	56,59	55,22	64,0	40	26,4	40	-	59
		15 H 075	15	60,64	59,27	66,5	45	26,4	40	-	60
		16 H 075	16	64,67	63,31	70,0	45	26,4	40	-	61
		17 H 075	17	68,72	67,35	75,0	45	26,4	40	-	62
		18 H 075	18	72,77	71,39	79,0	55	26,4	40	-	63
		19 H 075	19	76,81	75,44	82,5	60	26,4	40	11	64
		20 H 075	20	80,85	79,48	87,0	62	26,4	40	11	76
		21 H 075	21	84,89	83,52	91,0	65	26,4	40	11	66
		22 H 075	22	88,93	87,56	94,0	68	26,4	40	11	67
		23 H 075	23	92,98	91,61	97,0	72	26,4	40	11	68
		24 H 075	24	97,03	95,65	102,0	72	26,4	40	11	70
		25 H 075	25	101,06	99,69	106,0	72	26,4	40	11	71
		26 H 075	26	105,11	103,73	112,0	80	26,4	40	11	72
		27 H 075	27	109,15	107,78	115,0	80	26,4	40	11	74
		28 H 075	28	113,18	111,82	120,0	80	26,4	40	11	75
		30 H 075	30	121,29	119,90	128,0	80	26,4	40	11	78
		32 H 075	32	129,30	127,99	135,0	80	26,4	40	11	80
		33 H 075	33	133,40	132,03	142,0	80	26,4	40	11	81
		34 H 075	34	137,45	136,07	142,0	80	26,4	40	11	81
		35 H 075	35	141,49	140,12	150,0	80	26,4	40	11	85
		36 H 075	36	145,54	144,16	150,0	80	26,4	40	11	85
38 H 075	38	153,62	152,24	158,0	80	26,4	40	11	86		
40 H 075	40	161,70	160,33	168,0	80	26,4	40	11	90		
42 H 075	42	169,79	168,41	184,0	80	26,4	40	11	94		
GHISA	SENZA FLANGIA	44 H 075	44	177,80	176,50	184,0	80	26,4	40	14	95
		48 H 075	48	194,03	192,67	200,0	90	26,4	45	14	100
	50 H 075	4	50	202,13	200,75	-	90	26,4	45	14	-

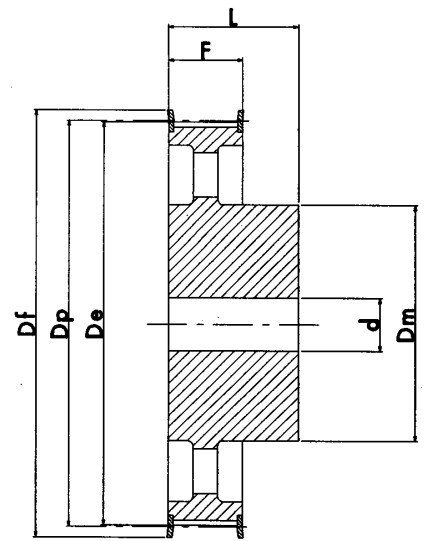
PULEGGE DENTATE POWER GRIP® PER CINGHIE POSITIVE



esecuzione 1F



esecuzione 4

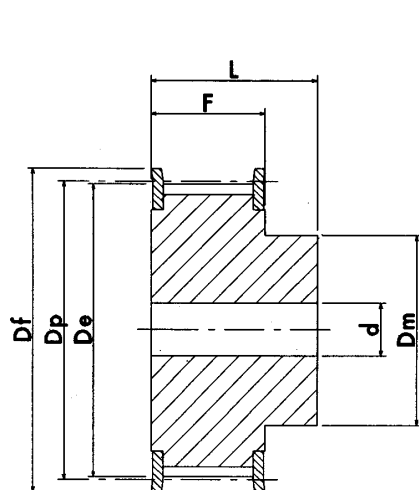


esecuzione 5F

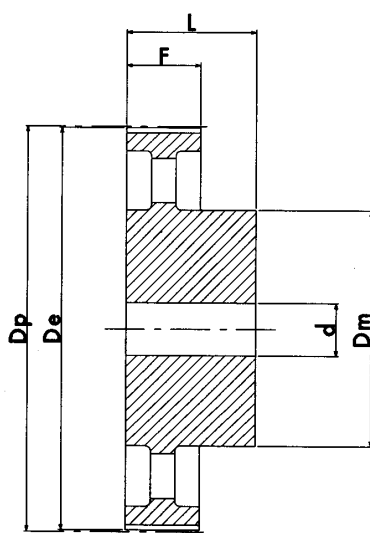
H 100 PASSO 1/2" (mm 12,7)

CARATTERISTICHE	TIPO	ESEC	N° DENTI	Dp PRIMITIVO	De ESTERNO	Df FLANGIA	Dm MOZZO	F	L	d	N° FLANGIA	
ACCIAIO	CON FLANGIA	14 H 100	1F	14	56,59	55,22	64,0	40	31,8	45	-	59
		15 H 100	1F	15	60,64	59,27	66,5	45	31,8	45	-	60
		16 H 100	1F	16	64,67	63,31	70,0	45	31,8	45	-	61
		17 H 100	1F	17	68,72	67,35	75,0	45	31,8	45	-	62
		18 H 100	1F	18	72,77	71,39	79,0	55	31,8	45	-	63
		19 H 100	1F	19	76,81	75,44	82,5	60	31,8	45	14	64
		20 H 100	1F	20	80,85	79,48	87,0	62	31,8	45	14	76
		21 H 100	1F	21	84,89	83,52	91,0	65	31,8	45	14	66
		22 H 100	1F	22	88,93	87,56	94,0	68	31,8	45	14	67
		23 H 100	1F	23	92,98	91,61	97,0	72	31,8	45	14	68
		24 H 100	1F	24	97,03	95,65	102,0	72	31,8	45	14	70
		25 H 100	1F	25	101,06	99,69	106,0	72	31,8	45	14	71
		26 H 100	1F	26	105,11	103,73	112,0	80	31,8	45	14	72
		27 H 100	1F	27	109,15	107,78	115,0	80	31,8	45	14	74
		28 H 100	1F	28	113,18	111,82	120,0	80	31,8	45	14	75
		29 H 100	1F	29	117,23	115,86	120,0	80	31,8	45	14	75
		30 H 100	1F	30	121,29	119,90	128,0	80	31,8	45	14	78
		32 H 100	1F	32	129,30	127,99	135,0	80	31,8	45	14	80
		33 H 100	1F	33	133,40	132,03	142,0	80	31,8	45	14	81
		34 H 100	1F	34	137,45	136,07	142,0	80	31,8	45	14	81
		35 H 100	1F	35	141,49	140,12	150,0	80	31,8	45	14	85
		36 H 100	1F	36	145,54	144,16	150,0	80	31,8	45	14	85
		38 H 100	1F	38	153,62	152,24	158,0	80	31,8	45	14	86
		40 H 100	1F	40	161,70	160,33	168,0	80	31,8	45	14	90
42 H 100	1F	42	169,79	168,41	180,0	80	31,8	45	14	94		
GHISA	CON FLANGIA	44 H 100	5F	44	177,88	176,50	184,0	80	31,8	50	14	95
		45 H 100	5F	45	181,91	180,54	192,0	80	31,8	50	14	96
		48 H 100	5F	48	194,03	192,67	200,0	90	31,8	50	14	100
	SENZA FLANGIA	50 H 100	4	50	202,13	200,75	-	90	31,8	50	19	-
		52 H 100	4	52	210,21	208,84	-	90	31,8	50	19	-
		58 H 100	4	58	234,47	233,09	-	90	31,8	50	19	-
		60 H 100	4	60	242,55	241,18	-	120	31,8	50	19	-
		70 H 100	4	70	282,98	281,61	-	120	31,8	55	19	-
		72 H 100	4	72	291,06	289,69	-	120	31,8	55	19	-
		84 H 100	4	84	339,57	338,20	-	120	31,8	55	19	-
		96 H 100	4	96	388,09	386,71	-	120	31,8	60	19	-
		120 H 100	4	120	485,12	483,73	-	120	31,8	60	19	-

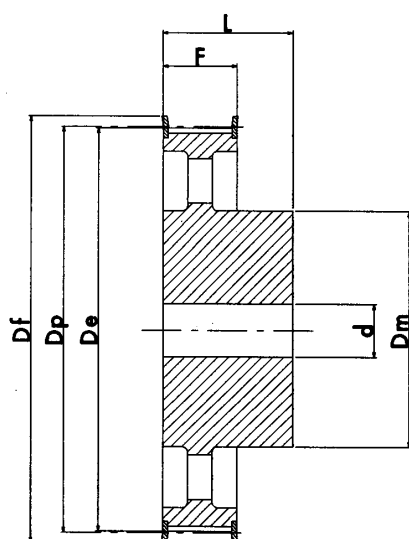
PULEGGE DENTATE POWER GRIP® PER CINGHIE POSITIVE



esecuzione 1F



esecuzione 4

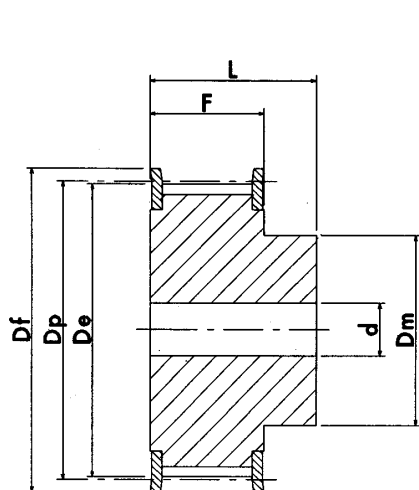


esecuzione 5F

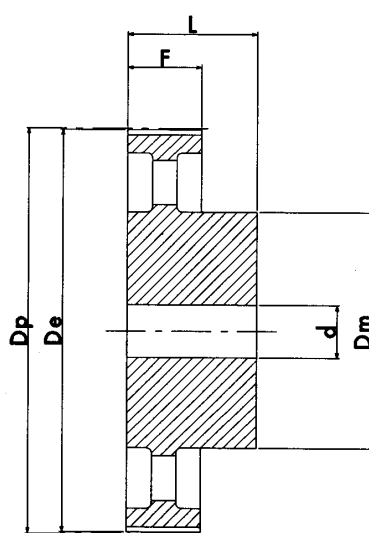
H 150 PASSO 1/2" (mm 12,7)

CARATTERISTICHE	TIPO	ESEC	N° DENTI	Dp PRIMITIVO	De ESTERNO	Df FLANGIA	Dm MOZZO	F	L	d	N° FLANGIA	
ACCIAIO	CON FLANGIA	14 H 150	14	56,59	55,22	64,0	42	46,0	58	-	59	
		15 H 150	15	60,64	59,27	66,5	45	46,0	58	-	60	
		16 H 150	16	64,67	63,31	70,0	45	46,0	58	-	61	
		17 H 150	17	68,72	67,35	75,0	45	46,0	58	-	62	
		18 H 150	18	72,77	71,39	79,0	55	46,0	58	-	63	
		19 H 150	19	76,81	75,44	82,5	60	46,0	58	-	64	
		20 H 150	20	80,85	79,48	87,0	62	46,0	58	-	76	
		21 H 150	21	84,89	83,52	91,0	65	46,0	58	-	66	
		22 H 150	22	88,93	87,56	94,0	68	46,0	58	-	67	
		23 H 150	23	92,98	91,61	97,0	72	46,0	58	-	68	
		24 H 150	24	97,03	95,65	102,0	72	46,0	58	-	70	
		25 H 150	25	101,06	99,69	106,0	72	46,0	58	-	71	
		26 H 150	26	105,11	103,73	112,0	80	46,0	58	-	72	
		27 H 150	27	109,15	107,78	115,0	80	46,0	58	-	74	
		28 H 150	28	113,18	111,82	120,0	80	46,0	58	-	75	
		29 H 150	29	117,23	115,86	120,0	80	46,0	58	-	75	
		30 H 150	30	121,29	119,90	128,0	80	46,0	58	-	78	
		32 H 150	32	129,30	127,99	135,0	80	46,0	58	-	80	
		33 H 150	33	133,40	132,03	142,0	80	46,0	58	-	81	
		34 H 150	34	137,45	136,07	142,0	80	46,0	58	-	81	
		35 H 150	35	141,49	140,12	150,0	80	46,0	58	-	85	
		36 H 150	36	145,54	144,16	150,0	80	46,0	58	-	85	
38 H 150	38	153,62	152,24	158,0	80	46,0	58	-	86			
40 H 150	40	161,70	160,33	168,0	80	46,0	58	-	90			
42 H 150	42	169,79	168,41	180,0	80	46,0	58	-	94			
GHISA	SENZA FLANGIA	44 H 150	5F	177,88	176,50	184,00	80	46,0	58	19	95	
		45 H 150	5F	181,91	180,54	192,00	80	46,0	58	19	96	
		48 H 150	5F	194,03	192,67	200,00	90	46,0	65	19	100	
	SENZA FLANGIA	50 H 150	4	50	202,13	200,75	-	90	46,0	65	19	-
		52 H 150	4	52	210,21	208,84	-	90	46,0	65	19	-
		58 H 150	4	58	234,47	233,09	-	90	46,0	65	19	-
		60 H 150	4	60	242,55	241,18	-	120	46,0	65	19	-
		70 H 150	4	70	282,98	281,61	-	120	46,0	65	24	-
		72 H 150	4	72	291,06	289,69	-	120	46,0	65	24	-
		84 H 150	4	84	339,57	338,20	-	120	46,0	65	24	-
96 H 150	4	96	388,09	386,71	-	120	46,0	65	24	-		
120 H 150	4	120	485,12	483,73	-	120	46,0	65	24	-		

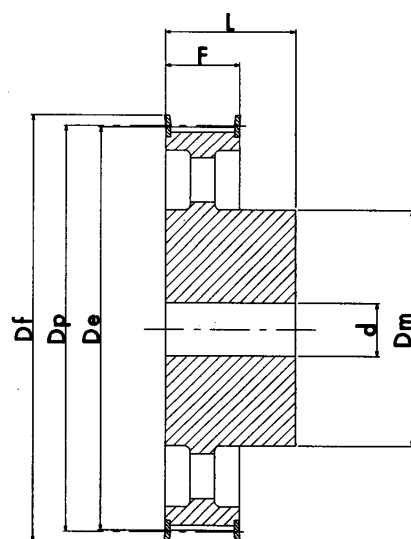
PULEGGE DENTATE POWER GRIP® PER CINGHIE POSITIVE



esecuzione 1F



esecuzione 4

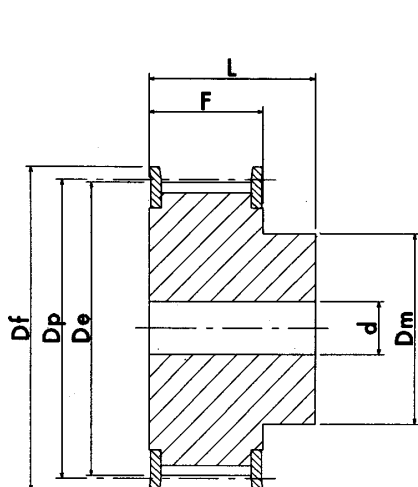


esecuzione 5F

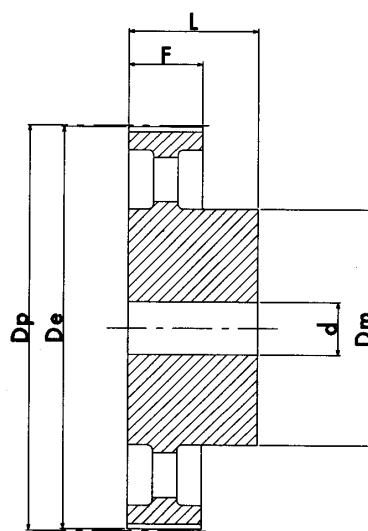
H 200 PASSO 1/2" (mm 12,7)

CARATTERISTICHE	TIPO	ESEC	N° DENTI	Dp PRIMITIVO	De ESTERNO	Df FLANGIA	Dm MOZZO	F	L	d	N° FLANGIA	
ACCIAIO	CON FLANGIA	14 H 200	1F	14	56,59	55,22	64,0	42	58,7	70	-	59
		15 H 200	1F	15	60,64	59,27	66,5	45	58,7	70	-	60
		16 H 200	1F	16	64,67	63,31	70,0	45	58,7	70	-	61
		17 H 200	1F	17	68,72	67,35	75,0	45	58,7	70	-	62
		18 H 200	1F	18	72,77	71,39	79,0	55	58,7	70	-	63
		19 H 200	1F	19	76,81	75,44	82,5	60	58,7	70	-	64
		20 H 200	1F	20	80,85	79,48	87,0	62	58,7	70	-	76
		21 H 200	1F	21	84,89	83,52	91,0	65	58,7	70	-	66
		22 H 200	1F	22	88,93	87,56	94,0	68	58,7	70	-	67
		23 H 200	1F	23	92,98	91,61	97,0	72	58,7	70	-	68
		24 H 200	1F	24	97,03	95,65	102,0	72	58,7	70	-	70
		25 H 200	1F	25	101,06	99,69	106,0	72	58,7	70	-	71
		26 H 200	1F	26	105,11	103,73	112,0	80	58,7	70	-	72
		27 H 200	1F	27	109,15	107,78	115,0	80	58,7	70	-	74
		28 H 200	1F	28	113,18	111,82	120,0	80	58,7	70	-	75
		29 H 200	1F	29	117,23	115,86	120,0	80	58,7	70	-	75
		30 H 200	1F	30	121,29	119,90	128,0	80	58,7	70	-	78
		32 H 200	1F	32	129,30	127,99	135,0	80	58,7	70	-	80
		33 H 200	1F	33	133,40	132,03	142,0	80	58,7	70	-	81
		34 H 200	1F	34	137,45	136,07	142,0	80	58,7	70	-	81
		35 H 200	1F	35	141,49	140,12	150,0	80	58,7	70	-	85
		36 H 200	1F	36	145,54	144,16	150,0	80	58,7	70	-	85
38 H 200	1F	38	153,62	152,24	158,0	80	58,7	70	-	86		
40 H 200	1F	40	161,70	160,33	168,0	80	58,7	70	-	90		
42 H 200	1F	42	169,79	168,41	180,0	80	58,7	70	-	94		
GHISA	CON FLANGIA	44 H 200	5F	44	177,88	176,50	184,0	80	58,7	70	19	95
		45 H 200	5F	45	181,91	180,54	192,0	80	58,7	70	19	96
		48 H 200	5F	48	194,03	192,67	200,0	90	58,7	75	24	100
	SENZA FLANGIA	50 H 200	4	50	202,13	200,75	-	90	58,7	75	24	-
		52 H 200	4	52	210,21	208,84	-	90	58,7	75	24	-
		58 H 200	4	58	234,47	233,09	-	90	58,7	75	24	-
		60 H 200	4	60	242,55	241,18	-	120	58,7	75	24	-
		70 H 200	4	70	282,98	281,61	-	120	58,7	75	28	-
		72 H 200	4	72	291,06	289,69	-	120	58,7	75	28	-
		84 H 200	4	84	339,57	338,20	-	120	58,7	75	28	-
		96 H 200	4	96	388,09	386,71	-	120	58,7	75	28	-
		120 H 200	4	120	485,12	483,73	-	120	58,7	75	28	-

PULEGGE DENTATE POWER GRIP® PER CINGHIE POSITIVE



esecuzione 1F

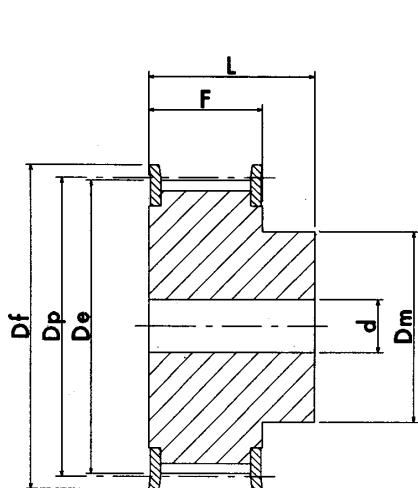


esecuzione 4

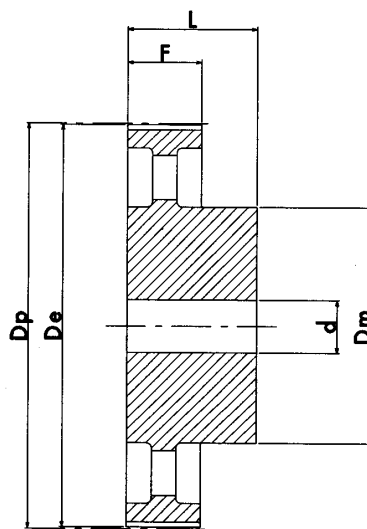
H 300 PASSO 1/2" (mm 12,7)

CARATTERISTICHE	TIPO	ESEC	N° DENTI	Dp PRIMITIVO	De ESTERNO	Df FLANGIA	Dm MOZZO	F	L	d	N° FLANGIA	
ACCIAIO	CON FLANGIA	14 H 300	1F	14	56,59	55,22	64,0	42	85,7	100	-	59
		15 H 300	1F	15	60,64	59,27	66,5	45	85,7	100	-	60
		16 H 300	1F	16	64,67	63,31	70,0	45	85,7	100	-	61
		17 H 300	1F	17	68,72	67,35	75,0	45	85,7	100	-	62
		18 H 300	1F	18	72,77	71,39	79,0	55	85,7	100	-	63
		19 H 300	1F	19	76,81	75,44	82,5	60	85,7	100	-	64
		20 H 300	1F	20	80,85	79,48	87,0	62	85,7	100	-	76
		21 H 300	1F	21	84,89	83,52	91,0	65	85,7	100	-	66
		22 H 300	1F	22	88,93	87,56	94,0	68	85,7	100	-	67
		23 H 300	1F	23	92,98	91,61	97,0	72	85,7	100	-	68
		24 H 300	1F	24	97,03	95,65	102,0	72	85,7	100	-	70
		25 H 300	1F	25	101,06	99,69	106,0	72	85,7	100	-	71
		26 H 300	1F	26	105,11	103,73	112,0	80	85,7	100	-	72
		27 H 300	1F	27	109,15	107,78	115,0	80	85,7	100	-	74
		28 H 300	1F	28	113,18	111,82	120,0	80	85,7	100	-	75
		30 H 300	1F	30	121,29	119,90	128,0	80	85,7	100	-	78
		32 H 300	1F	32	129,30	127,99	135,0	80	85,7	100	-	80
		33 H 300	1F	33	133,40	132,03	142,0	80	85,7	100	-	81
		34 H 300	1F	34	137,45	136,07	142,0	80	85,7	100	-	81
		35 H 300	1F	35	141,49	140,12	150,0	80	85,7	100	-	85
		36 H 300	1F	36	145,54	144,16	150,0	80	85,7	100	-	85
38 H 300	1F	38	153,62	152,24	158,0	80	85,7	100	-	86		
40 H 300	1F	40	161,70	160,33	168,0	80	85,7	100	-	90		
42 H 300	1F	42	169,79	168,41	180,0	80	85,7	100	-	94		
GHISA	SENZA FLANGIA	44 H 300	4	44	177,88	176,50	-	80	85,7	100	24	-
		48 H 300	4	48	194,03	192,67	-	90	85,7	100	24	-
		50 H 300	4	50	202,13	200,75	-	90	85,7	100	24	-
		58 H 300	4	58	234,47	233,09	-	90	85,7	100	24	-
		60 H 300	4	60	242,55	241,18	-	120	85,7	100	24	-
		72 H 300	4	72	291,06	289,69	-	120	85,7	100	28	-
		84 H 300	4	84	339,57	338,20	-	120	85,7	100	28	-
		96 H 300	4	96	388,09	386,71	-	120	85,7	100	28	-
120 H 300	4	120	485,12	483,73	-	120	85,7	100	28	-		

PULEGGE DENTATE POWER GRIP® PER CINGHIE POSITIVE



esecuzione 1F



esecuzione 4

* Le dentature con l'asterisco vengono costruite a richiesta

XH 200 PASSO 7/8" (mm 22,22)

CARATTERISTICHE		TIPO	ESEC	N° DENTI	Dp PRIMITIVO	De ESTERNO	Df FLANGIA	Dm MOZZO	F	L	d	N° FLANGIA
ACCIAIO	CON FLANGIA	18 XH 200	1F	18	127,34	124,55	140,0	100	65	80	24	155
		19 XH 200	1F	19	134,41	131,62	146,0	100	65	80	24	156
		20 XH 200	1F	20	141,49	138,69	155,0	100	65	80	24	157
		21 XH 200	1F	21	148,56	145,77	160,0	110	65	80	24	158
		22 XH 200	1F	22	155,64	152,84	170,0	110	65	80	24	159
		24 XH 200	1F	24	169,79	166,99	184,0	120	65	80	24	161
		25 XH 200	1F	25	176,86	174,07	188,0	120	65	80	24	162
		26 XH 200	1F	26	183,93	181,14	198,0	120	65	80	24	163
		27 XH 200	1F	27	191,01	188,22	205,0	120	65	80	24	164
		28 XH 200	1F	28	198,09	195,29	212,0	120	65	80	24	165
		30 XH 200	1F	30	212,23	209,44	227,0	120	65	80	24	167
		32 XH 200	1F	32	226,38	223,59	240,0	120	65	80	24	169
		34 XH 200	1F	34	240,53	237,74	256,0	120	65	80	24	170
		GHISA	SENZA FLANGIA	*38 XH 200	4	38	268,83	266,03	-	150	65	80
*40 XH 200	4			40	282,98	280,18	-	150	65	100	28	-
*48 XH 200	4			48	339,57	336,78	-	150	65	100	28	-
*60 XH 200	4			60	424,47	421,67	-	150	65	100	28	-
*72 XH 200	4			72	509,36	506,56	-	160	65	100	28	-
*84 XH 200	4			84	594,25	591,46	-	160	65	100	28	-
*96 XH 200	4			96	679,15	676,35	-	160	65	100	28	-
*120 XH 200	4	120	848,93	846,14	-	160	65	100	28	-		

PULEGGE DENTATE POWER GRIP® PER CINGHIE POSITIVE

XH 300 PASSO 7/8" (mm 22,22)

CARATTERISTICHE	TIPO	ESEC	N° DENTI	Dp PRIMITIVO	De ESTERNO	Df FLANGIA	Dm MOZZO	F	L	d	N° FLANGIA	
ACCIAIO	CON FLANGIA	18 XH 300	1F	18	127,34	124,55	140,0	100	90,5	110	28	155
		19 XH 300	1F	19	134,41	131,62	146,0	100	90,5	110	28	156
		20 XH 300	1F	20	141,49	138,69	155,0	100	90,5	110	28	157
		21 XH 300	1F	21	148,56	145,77	160,0	110	90,5	110	28	158
		22 XH 300	1F	22	155,64	152,84	170,0	110	90,5	110	28	159
		24 XH 300	1F	24	169,79	166,99	184,0	120	90,5	110	28	161
		25 XH 300	1F	25	176,86	174,07	188,0	120	90,5	110	28	162
		26 XH 300	1F	26	183,93	181,14	198,0	120	90,5	110	28	163
		27 XH 300	1F	27	191,01	188,22	205,0	120	90,5	110	28	164
		28 XH 300	1F	28	198,09	195,29	212,0	150	90,5	110	28	165
		30 XH 300	1F	30	212,23	209,44	227,0	150	90,5	110	28	167
		32 XH 300	1F	32	226,38	223,59	240,0	150	90,5	110	28	169
		34 XH 300	1F	34	240,53	237,74	256,0	150	90,5	110	28	170
		GHISA	SENZA FLANGIA	*38 XH 300	4	38	268,83	266,03	-	150	90,5	120
*40 XH 300	4			40	282,98	280,18	-	150	90,5	120	32	-
*48 XH 300	4			48	339,57	336,78	-	175	90,5	120	32	-
*60 XH 300	4			60	424,47	421,67	-	175	90,5	120	32	-
*72 XH 300	4			72	509,36	506,56	-	175	90,5	120	32	-
*84 XH 300	4			84	594,25	591,46	-	175	90,5	120	32	-
*96 XH 300	4			96	679,15	676,35	-	175	90,5	120	32	-
*120 XH 300	4			120	848,93	846,14	-	175	90,5	120	32	-

* Le dentature con l'asterisco vengono costruite a richiesta

XH 400 PASSO 7/8" (mm 22,22)

CARATTERISTICHE	TIPO	ESEC	N° DENTI	Dp PRIMITIVO	De ESTERNO	Df FLANGIA	Dm MOZZO	F	L	d	N° FLANGIA	
ACCIAIO	CON FLANGIA	18 XH 400	1F	18	127,34	124,55	140,0	100	118	132	32	155
		19 XH 400	1F	19	134,41	131,62	146,0	100	118	132	32	156
		20 XH 400	1F	20	141,49	138,69	155,0	100	118	132	32	157
		21 XH 400	1F	21	148,56	145,77	160,0	110	118	132	32	158
		22 XH 400	1F	22	155,64	152,84	170,0	110	118	132	32	159
		24 XH 400	1F	24	169,79	166,99	184,0	120	118	132	32	161
		25 XH 400	1F	25	176,86	174,07	188,0	120	118	132	32	162
		26 XH 400	1F	26	183,93	181,14	198,0	120	118	132	32	163
		27 XH 400	1F	27	191,01	188,22	205,0	120	118	132	32	164
		28 XH 400	1F	28	198,09	195,29	212,0	150	118	132	32	165
		30 XH 400	1F	30	212,23	209,44	227,0	150	118	132	32	167
		32 XH 400	1F	32	226,38	223,59	240,0	150	118	132	32	169
		34 XH 400	1F	34	240,53	237,74	256,0	150	118	132	32	170
		GHISA	SENZA FLANGIA	*38 XH 400	4	38	268,83	266,03	-	150	118	132
*40 XH 400	4			40	282,98	280,18	-	150	118	132	32	-
*48 XH 400	4			48	339,57	336,78	-	175	118	132	32	-
*60 XH 400	4			60	424,47	421,67	-	175	118	132	32	-
*72 XH 400	4			72	509,36	506,56	-	175	118	132	32	-
*84 XH 400	4			84	594,25	591,46	-	175	118	132	32	-
*96 XH 400	4			96	679,15	676,35	-	175	118	132	32	-
*120 XH 400	4			120	848,93	846,14	-	175	118	132	32	-

PULEGGE DENTATE POWER GRIP® PER CINGHIE POSITIVE

XXH 200 PASSO 1" 1/4 (mm 31,75)

CARATTERISTICHE		TIPO	ESEC	N° DENTI	Dp PRIMITIVO	De ESTERNO	Df FLANGIA	Dm MOZZO	F	L	d	N° FLANGIA
ACCIAIO	CON FLANGIA	18 XXH 200	1F	18	181,91	178,87	198,0	140	64,2	100	28	163
		20 XXH 200	1F	20	202,13	199,08	212,0	150	64,2	100	28	165
		22 XXH 200	1F	22	222,34	219,29	240,0	150	64,2	100	28	169
		24 XXH 200	1F	24	242,55	239,50	267,0	150	64,2	100	28	173
		26 XXH 200	1F	26	262,76	259,79	290,0	150	64,2	100	28	178
GHISA	SENZA FLANGIA	*30 XXH 200	4	30	303,19	300,14	-	150	64,2	100	28	-
		*40 XXH 200	4	40	404,25	401,21	-	150	64,2	100	28	-
		*48 XXH 200	4	48	485,10	482,06	-	175	64,2	120	32	-
		*60 XXH 200	4	60	606,38	603,33	-	175	64,2	120	32	-
		*72 XXH 200	4	72	727,66	724,61	-	175	64,2	120	38	-
		*90 XXH 200	4	90	909,57	906,52	-	175	64,2	120	38	-

* Le dentature con l'asterisco vengono costruite a richiesta

XXH 300 PASSO 1" 1/4 (mm 31,75)

CARATTERISTICHE		TIPO	ESEC	N° DENTI	Dp PRIMITIVO	De ESTERNO	Df FLANGIA	Dm MOZZO	F	L	d	N° FLANGIA
ACCIAIO	CON FLANGIA	18 XXH 300	1F	18	181,91	178,87	198,0	140	91,4	110	28	163
		20 XXH 300	1F	20	202,13	199,08	212,0	150	91,4	110	28	165
		22 XXH 300	1F	22	222,34	219,29	240,0	150	91,4	110	28	169
		24 XXH 300	1F	24	242,55	239,50	267,0	150	91,4	110	28	173
		26 XXH 300	1F	26	262,76	259,79	290,0	150	91,4	110	28	178
GHISA	SENZA FLANGIA	*30 XXH 300	4	30	303,19	300,14	-	150	91,4	110	28	-
		*40 XXH 300	4	40	404,25	401,21	-	150	91,4	110	28	-
		*48 XXH 300	4	48	485,10	482,06	-	175	91,4	120	32	-
		*60 XXH 300	4	60	606,38	603,33	-	175	91,4	120	32	-
		*72 XXH 300	4	72	727,66	724,61	-	175	91,4	120	38	-
		*90 XXH 300	4	90	909,57	906,52	-	175	91,4	120	38	-

PULEGGE DENTATE POWER GRIP® PER CINGHIE POSITIVE

XXH 400 PASSO 1" 1/4 (mm 31,75)

CARATTERISTICHE	TIPO	ESEC	N° DENTI	Dp PRIMITIVO	De ESTERNO	Df FLANGIA	Dm MOZZO	F	L	d	N° FLANGIA	
ACCIAIO	CON FLANGIA	18 XXH 400	1F	18	181,91	178,87	198,0	140	118,2	140	32	163
		20 XXH 400	1F	20	202,13	199,08	212,0	150	118,2	140	32	165
		22 XXH 400	1F	22	222,34	219,29	240,0	150	118,2	140	32	169
		24 XXH 400	1F	24	242,55	239,50	267,0	150	118,2	140	32	173
		26 XXH 400	1F	26	262,76	259,79	290,0	150	118,2	140	32	178
GHISA	SENZA FLANGIA	*30 XXH 400	4	30	303,19	300,14	-	185	118,2	140	32	-
		*40 XXH 400	4	40	404,25	401,21	-	185	118,2	140	32	-
		*48 XXH 400	4	48	485,10	482,06	-	185	118,2	140	38	-
		*60 XXH 400	4	60	606,38	603,33	-	185	118,2	140	38	-
		*72 XXH 400	4	72	727,66	724,61	-	220	118,2	140	38	-
		*90 XXH 400	4	90	909,57	906,52	-	220	118,2	140	38	-

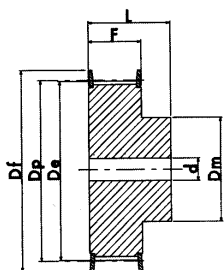
* Le dentature con l'asterisco vengono costruite a richiesta

XXH 500 PASSO 1" 1/4 (mm 31,75)

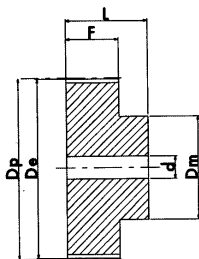
CARATTERISTICHE	TIPO	ESEC	N° DENTI	Dp PRIMITIVO	De ESTERNO	Df FLANGIA	Dm MOZZO	F	L	d	N° FLANGIA	
ACCIAIO	CON FLANGIA	18 XXH 500	1F	18	181,91	178,87	198,0	145,3	168	32	163	
		20 XXH 500	1F	20	202,13	199,08	212,0	150	145,3	168	32	165
		22 XXH 500	1F	22	222,34	219,29	240,0	150	145,3	168	32	169
		24 XXH 500	1F	24	242,55	239,50	267,0	150	145,3	168	32	173
		26 XXH 500	1F	26	262,76	259,79	290,0	150	145,3	168	32	178
GHISA	SENZA FLANGIA	*30 XXH 500	4	30	303,19	300,14	-	215	145,3	168	32	-
		*40 XXH 500	4	40	404,25	401,21	-	215	145,3	168	32	-
		*48 XXH 500	4	48	485,10	482,06	-	215	145,3	168	38	-
		*60 XXH 500	4	60	606,38	603,33	-	240	145,3	168	38	-
		*72 XXH 500	4	72	727,66	724,61	-	240	145,3	168	38	-
		*90 XXH 500	4	90	909,57	906,52	-	240	145,3	168	38	-

PULEGGE DENTATE POWER GRIP® PER CINGHIE POSITIVE

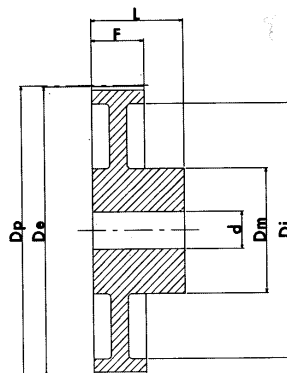
EXPORT "FOSFATATE"



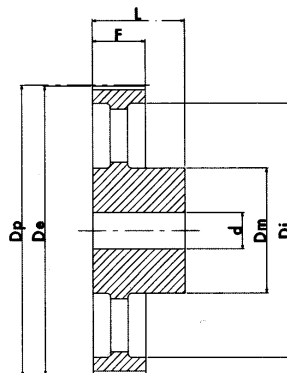
ESECUZIONE 1F



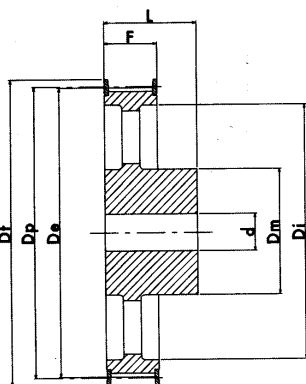
ESECUZIONE 2



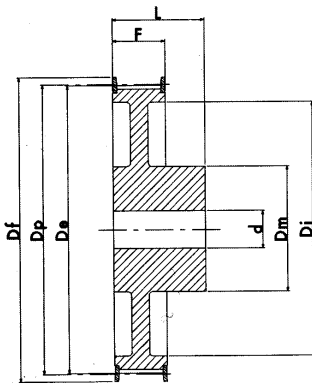
ESECUZIONE 3



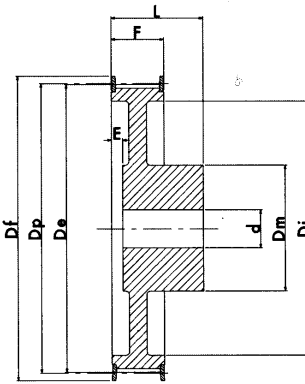
ESECUZIONE 4



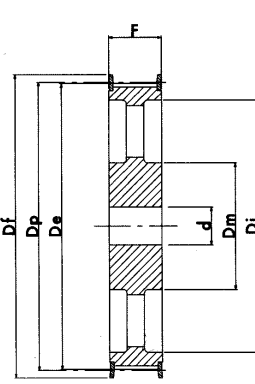
ESECUZIONE 5F



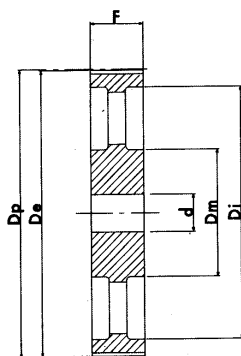
ESECUZIONE 6F



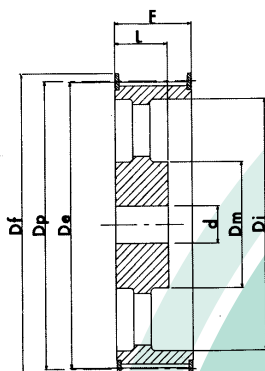
ESECUZIONE 7F



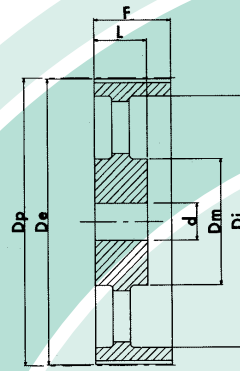
ESECUZIONE 8F



ESECUZIONE 9



ESECUZIONE 10F



ESECUZIONE 11

PULEGGE DENTATE POWER GRIP® PER CINGHIE POSITIVE

EXPORT "FOSFATATE"

XL 037 PASSO 1/5" (mm 5,08)

CARATTERISTICHE	TIPO	ESEC	N° DENTI	Dp PRIMITIVO	De ESTERNO	Df FLANGIA	Dm MOZZO	Di	F	L	d Øforo	N°2 fori fil. a 90°	N° FLANGIA	
ACCIAIO	CON FLANGIA	10 XL 037	1F	10	16,17	15,66	23	9,5	-	14,3	19,8	4,0	M3	1
		11 XL 037	1F	11	17,79	17,28	23	11,0	-	14,3	19,8	4,0	M3	1
		12 XL 037	1F	12	19,40	18,90	25	12,7	-	14,3	19,8	4,0	M3	2
		14 XL 037	1F	14	22,64	22,13	28	14,3	-	14,3	19,8	6,0	M4	4
		15 XL 037	1F	15	24,26	23,75	28	15,9	-	14,3	19,8	6,0	M4	4
		16 XL 037	1F	16	25,87	25,36	32	17,5	-	14,3	19,8	6,0	M4	5
		18 XL 037	1F	18	29,11	28,60	35	20,6	-	14,3	19,8	6,0	M4	7
		20 XL 037	1F	20	32,34	31,83	38	23,8	-	14,3	22,2	6,0	M4	9
		21 XL 037	1F	21	33,96	33,45	38	23,8	-	14,3	22,2	6,0	M4	9
		22 XL 037	1F	22	35,57	35,07	41	25,4	-	14,3	22,2	6,0	M4	10
		24 XL 037	1F	24	38,81	38,30	44	27,0	-	14,3	22,2	6,0	M4	12
		26 XL 037	1F	26	42,04	41,53	48	30,0	-	14,3	22,2	6,0	M4	11
		28 XL 037	1F	28	45,28	44,77	51	30,2	-	14,3	22,2	6,0	M4	16
		30 XL 037	1F	30	48,51	48,00	54	34,9	-	14,3	22,2	6,0	M4	18
		ALLUMINIO	SENZA FLANGIA	32 XL 037	2	32	51,74	51,24	-	38,0	-	14,3	25,4	8,0
36 XL 037	2			36	58,21	57,70	-	38,0	-	14,3	25,4	8,0	M4	-
40 XL 037	2			40	64,68	64,17	-	38,0	-	14,3	25,4	8,0	M4	-
42 XL 037	3			42	67,91	67,41	-	38,0	58	14,3	25,4	8,0	M4	-
44 XL 037	3			44	71,15	70,64	-	38,0	60	14,3	25,4	8,0	M4	-
48 XL 037	3			48	77,62	77,11	-	38,0	66	14,3	25,4	8,0	M4	-
60 XL 037	3			60	97,02	96,51	-	38,0	82	14,3	25,4	8,0	M4	-
72 XL 037	3			72	116,43	115,92	-	38,0	100	14,3	25,4	8,0	M4	-

L 050 PASSO 3/8" (mm 9,52)

CARATTERISTICHE	TIPO	ESEC	N° DENTI	Dp PRIMITIVO	De ESTERNO	Df FLANGIA	Dm MOZZO	Di	F	L	d Øforo	N° FLANGIA	
ACCIAIO	CON FLANGIA	10 L 050	1F	10	30,32	29,56	37	22	-	19	26	6	50
		12 L 050	1F	12	36,38	35,62	43	28	-	19	26	6	52
		13 L 050	1F	13	39,41	38,65	44	30	-	19	26	6	83
		14 L 050	1F	14	42,45	41,68	48	33	-	19	26	8	54
		15 L 050	1F	15	45,48	44,72	51	36	-	19	26	8	55
		16 L 050	1F	16	48,51	47,75	54	38	-	19	26	8	56
		17 L 050	1F	17	51,54	50,78	57	40	-	19	26	10	57
		18 L 050	1F	18	54,57	53,81	60	40	-	19	26	10	58
		19 L 050	1F	19	57,61	56,84	64	40	-	19	26	10	59
		20 L 050	1F	20	60,64	59,88	66,5	46	-	19	26	10	60
		21 L 050	1F	21	63,67	62,91	70	46	-	19	26	10	61
		22 L 050	1F	22	66,70	65,94	75	50	-	19	26	10	62
		24 L 050	1F	24	72,77	72,00	79	50	-	19	26	12	63
		26 L 050	1F	26	78,83	78,07	86	50	-	19	26	12	65
		28 L 050	1F	28	84,89	84,13	91	50	-	19	26	12	66
		30 L 050	1F	30	90,96	90,20	97	50	-	19	26	12	68
		32 L 050	1F	32	97,02	96,26	102	50	-	19	26	12	70
		36 L 050	6F	36	109,15	108,39	115	50	94	19	26	12	74
		40 L 050	6F	40	121,28	120,51	128	50	98	19	26	12	78
		GHISA	SENZA FLANGIA	44 L 050	5F	44	133,40	132,64	142	50	108	19	26
48 L 050	5F			48	145,53	144,77	150	50	118	19	26	12	85
60 L 050	4			60	191,91	181,15	-	50	163	19	28	15	-
72 L 050	4			72	218,30	217,53	-	50	199	19	28	15	-
		84 L 050	4	84	254,68	253,92	-	50	236	19	28	15	-

N.B. le pulegge in alluminio non sono fosfatate

PULEGGE DENTATE POWER GRIP® PER CINGHIE POSITIVE

EXPORT "FOSFATATE"

L 075 PASSO 3/8" (mm 9,52)

CARATTERISTICHE	TIPO	ESEC	N° DENTI	Dp PRIMITIVO	De ESTERNO	Df FLANGIA	Dm MOZZO	Di	F	L	d Øforo	N° FLANGIA	
ACCIAIO	CON FLANGIA	10 L 075	1F	10	30,32	29,56	37	22	-	25	32	8	50
		12 L 075	1F	12	36,38	35,62	43	28	-	25	32	8	52
		13 L 075	1F	13	39,41	38,65	44	30	-	25	32	8	83
		14 L 075	1F	14	42,45	41,68	48	33	-	25	32	8	54
		15 L 075	1F	15	45,48	44,72	51	36	-	25	32	8	55
		16 L 075	1F	16	48,51	47,75	54	38	-	25	32	8	56
		17 L 075	1F	17	51,54	50,78	57	40	-	25	32	10	57
		18 L 075	1F	18	54,57	53,81	60	40	-	25	32	10	58
		19 L 075	1F	19	57,61	56,84	64	40	-	25	32	10	59
		20 L 075	1F	20	60,64	59,88	66,5	46	-	25	32	10	60
		21 L 075	1F	21	63,67	62,91	70	46	-	25	32	10	61
		22 L 075	1F	22	66,70	65,94	75	50	-	25	32	10	62
		24 L 075	1F	24	72,77	72,00	79	50	-	25	32	12	63
		26 L 075	1F	26	78,83	78,07	86	50	-	25	32	12	65
		28 L 075	1F	28	84,89	84,13	91	50	-	25	32	12	66
		30 L 075	1F	30	90,96	90,20	97	50	-	25	32	12	68
		32 L 075	1F	32	97,02	96,26	102	50	-	25	32	12	70
		36 L 075	6F	36	109,15	108,39	115	55	94	25	32	12	74
		40 L 075	6F	40	121,28	120,51	128	60	98	25	32	12	78
		GHISA	CON FLANGIA	44 L 075	5F	44	133,40	132,64	142	60	108	25	32
48 L 075	5F			48	145,53	144,77	150	60	118	25	32	12	85
SENZA FLANGIA	60 L 075		4	60	191,91	181,15	-	60	163	26	35	15	-
	72 L 075		4	70	218,30	217,53	-	60	199	26	35	15	-
	84 L 075		4	84	254,68	253,92	-	60	236	26	35	15	-

L 100 PASSO 3/8" (mm 9,52)

CARATTERISTICHE	TIPO	ESEC	N° DENTI	Dp PRIMITIVO	De ESTERNO	Df FLANGIA	Dm MOZZO	Di	F	L	d Øforo	N° FLANGIA	
ACCIAIO	CON FLANGIA	10 L 100	1F	10	30,32	29,56	37	22	-	31	38	8	50
		12 L 100	1F	12	36,38	35,62	43	28	-	31	38	8	52
		13 L 100	1F	13	39,41	38,65	44	30	-	31	38	8	83
		14 L 100	1F	14	42,45	41,68	48	33	-	31	38	8	54
		15 L 100	1F	15	45,48	44,72	51	36	-	31	38	8	55
		16 L 100	1F	16	48,51	47,75	54	38	-	31	38	8	56
		17 L 100	1F	17	51,54	50,78	57	40	-	31	38	10	57
		18 L 100	1F	18	54,57	53,81	60	40	-	31	38	10	58
		19 L 100	1F	19	57,61	56,84	64	40	-	31	38	10	59
		20 L 100	1F	20	60,64	59,88	66,5	46	-	31	38	10	60
		21 L 100	1F	21	63,67	62,91	70	46	-	31	38	10	61
		22 L 100	1F	22	66,70	65,94	75	50	-	31	38	10	62
		24 L 100	1F	24	72,77	72,00	79	50	-	31	38	12	63
		26 L 100	1F	26	78,83	78,07	86	50	-	31	38	12	65
		28 L 100	1F	28	84,89	84,13	91	50	-	31	38	12	66
		30 L 100	1F	30	90,96	90,20	97	50	-	31	38	12	68
		32 L 100	1F	32	97,02	96,26	102	50	-	31	38	12	70
		36 L 100	7F	36	109,15	108,39	115	55	94	32	38	12	74
		40 L 100	7F	40	121,28	120,51	128	60	98	32	38	12	78
		GHISA	CON FLANGIA	44 L 100	8F	44	133,40	132,64	142	60	108	32	-
48 L 100	8F			48	145,53	144,77	150	60	118	32	-	12	85
SENZA FLANGIA	60 L 100		4	60	191,91	181,15	-	60	163	32	35	15	-
	72 L 100		4	72	218,30	217,53	-	60	199	32	35	15	-
	84 L 100		4	84	254,68	253,92	-	60	236	32	35	15	-

PULEGGE DENTATE POWER GRIP® PER CINGHIE POSITIVE

EXPORT "FOSFATATE"

H 100 PASSO 1/2" (mm 12,7)

CARATTERISTICHE	TIPO	ESEC	N° DENTI	Dp PRIMITIVO	De ESTERNO	Df FLANGIA	Dm MOZZO	Di	F	L	E	d Øforo	N° FLANGIA	
ACCIAIO	CON FLANGIA	14 H 100	1F	14	56,60	55,22	64	40	-	31	41	-	10	59
		16 H 100	1F	16	64,68	63,31	70	46	-	31	41	-	10	61
		18 H 100	1F	18	72,77	71,39	79	54	-	31	41	-	12	63
		19 H 100	1F	19	76,81	75,44	82,5	58	-	31	41	-	12	64
		20 H 100	1F	20	80,85	79,48	87	62	-	31	41	-	12	76
		21 H 100	1F	21	84,89	83,52	91	67	-	31	41	-	12	66
		22 H 100	1F	22	88,94	87,56	94	70	-	31	41	-	12	67
		24 H 100	1F	24	97,02	95,65	102	75	-	31	41	-	12	70
		26 H 100	7F	26	105,11	103,73	112	55	81	32	40	8	15	72
		28 H 100	7F	28	113,19	111,82	115	60	88	32	40	8	15	75
		30 H 100	7F	30	121,28	119,90	128	60	97	32	40	8	15	78
		32 H 100	6F	32	129,36	127,99	135	70	105	32	40	-	20	80
		36 H 100	6F	36	145,53	144,16	150	80	118	32	40	-	20	85
		GHISA	SENZA FLANGIA	40 H 100	5F	40	161,70	160,33	168	80	135	32	40	-
44 H 100	5F			44	177,87	176,50	184	80	150	32	40	-	20	95
48 H 100	5F			48	194,04	192~67	200	80	170	32	40	-	20	100
SENZA FLANGIA	60 H 100		4	60	242,55	241,18	-	80	216	34	45	-	20	-
	72 H 100		4	72	291,06	289,69	-	80	263	34	45	-	20	-
	84 H 100		4	84	339,57	338,20	-	80	312	34	45	-	20	-
	96 H 100		4	96	388,08	386,71	-	80	360	34	45	-	20	-
	120 H 100		4	120	485,10	483,73	-	90	458	34	50	-	20	-

H 150 PASSO 1/2" (mm 12,7)

CARATTERISTICHE	TIPO	ESEC	N° DENTI	Dp PRIMITIVO	De ESTERNO	Df FLANGIA	Dm MOZZO	Di	F	L	E	d Øforo	N° FLANGIA	
ACCIAIO	CON FLANGIA	14 H 150	1F	14	56,60	55,22	64	40	-	44	54	-	12	59
		16 H 150	1F	16	64,68	63,31	70	46	-	44	54	-	12	61
		18 H 150	1F	18	72,77	71,39	79	54	-	44	54	-	12	63
		19 H 150	1F	19	76,81	75,44	82,5	58	-	44	54	-	12	64
		20 H 150	1F	20	80,85	79,48	87	62	-	44	54	-	12	76
		21 H 150	1F	21	84,89	83,52	91	67	-	44	54	-	12	66
		22 H 150	1F	22	88,94	87,56	94	70	-	44	54	-	12	67
		24 H 150	1F	24	97,02	95,65	102	75	-	44	54	-	12	70
		26 H 150	7F	26	105,11	103,73	112	55	81	45	53	18	15	72
		28 H 150	7F	28	113,19	111,82	115	60	88	45	53	18	15	75
		30 H 150	7F	30	121,28	119,90	128	60	97	45	53	18	15	78
		32 H 150	6F	32	129,36	127,99	135	70	105	45	53	-	20	80
		36 H 150	6F	36	145,53	144,16	150	80	118	45	53	-	20	85
		GHISA	SENZA FLANGIA	40 H 150	8F	40	161,7	160,33	168	80	135	45	-	-
44 H 150	8F			44	177,87	176,50	184	80	150	45	-	-	20	95
48 H 150	8F			48	194,04	192,67	200	80	170	45	-	-	20	100
SENZA FLANGIA	60 H 150		9	60	242,55	241,18	-	85	216	46	-	-	20	-
	72 H 150		9	72	291,06	289,69	-	85	263	46	-	-	20	-
	84 H 150		9	84	339,57	338,20	-	85	312	46	-	-	20	-
	96 H 150		9	96	388,08	386,71	-	85	360	46	-	-	20	-
	120 H 150		4	120	485,10	483,73	-	95	458	46	55	-	24	-

PULEGGE DENTATE POWER GRIP® PER CINGHIE POSITIVE

EXPORT "FOSFATATE"

H 200 PASSO 1/2" (mm 12,7)

CARATTERISTICHE	TIPO	ESEC	N° DENTI	Dp PRIMITIVO	De ESTERNO	Df FLANGIA	Dm MOZZO	Di	F	L	E	d Øforo	N° FLANGIA	
ACCIAIO	CON FLANGIA	14 H 200	1F	14	56,60	55,22	64	40	-	58	68	-	-	59
		16 H 200	1F	16	64,68	63,31	70	46	-	58	68	-	-	61
		18 H 200	1F	18	71,77	71,39	79	54	-	58	68	-	-	63
		19 H 200	1F	19	76,81	75,44	82,5	58	-	58	68	-	-	64
		20 H 200	1F	20	80,85	79,48	87	62	-	58	68	-	-	76
		21 H 200	1F	21	84,89	83,52	91	67	-	58	68	-	-	66
		22 H 200	1F	22	88,94	87,56	94	70	-	58	68	-	-	67
		24 H 200	1F	24	97,02	95,65	102	75	-	58	68	-	-	70
		26 H 200	7F	26	105,11	103,73	112	60	81	58	66	24	15	72
		28 H 200	7F	28	113,19	111,82	115	60	88	58	66	24	15	75
		30 H 200	7F	30	121,28	119,90	128	70	97	58	66	24	15	78
		32 H 200	7F	32	129,36	127,99	135	70	105	58	66	19	20	80
		36 H 200	7F	36	145,53	144,16	150	80	118	58	66	19	20	85
GHISA	CON FLANGIA	40 H 200	10F	40	161,70	160,33	168	80	135	58	45	-	20	90
		44 H 200	10F	44	177,87	176,50	184	80	150	58	45	-	20	95
		48 H 200	10F	48	194,04	192,67	200	80	170	58	45	-	20	100
	SENZA FLANGIA	60 H 200	11	60	242,55	241,18	-	90	216	60	50	-	20	-
		72 H 200	11	72	291,06	289,69	-	90	263	60	50	-	20	-
		84 H 200	11	84	339,57	338,20	-	90	312	60	50	-	20	-
		96 H 200	11	96	388,08	386,71	-	90	360	60	50	-	20	-
		120 H 200	9	120	485,10	483,73	-	100	458	60	-	-	24	-

H 300 PASSO 1/2" (mm 12,7)

CARATTERISTICHE	TIPO	ESEC	N° DENTI	Dp PRIMITIVO	De ESTERNO	Df FLANGIA	Dm MOZZO	Di	F	L	E	d Øforo	N° FLANGIA	
ACCIAIO	CON FLANGIA	16 H 300	1F	16	64,68	63,31	70	46	-	84	94	-	-	61
		18 H 300	1F	18	71,77	71,39	79	54	-	84	94	-	-	63
		19 H 300	1F	19	76,81	75,44	82,5	58	-	84	94	-	-	64
		20 H 300	1F	20	80,85	79,48	87	62	-	84	94	-	-	76
		21 H 300	1F	21	84,89	83,52	91	67	-	84	94	-	-	66
		22 H 300	1F	22	88,94	87,56	94	70	-	84	94	-	-	67
		24 H 300	1F	24	97,02	95,65	102	75	-	84	94	-	-	70
		26 H 300	7F	26	105,11	103,73	112	60	81	84	92	35	15	72
		28 H 300	7F	28	113,19	111,82	115	60	88	84	92	35	15	75
		30 H 300	7F	30	121,28	119,90	128	70	97	84	92	35	15	78
		32 H 300	7F	32	129,36	127,99	135	70	105	84	92	35	20	80
		36 H 300	7F	36	145,53	144,16	150	80	118	84	92	35	20	85
		GHISA	CON FLANGIA	40 H 300	10F	40	161,70	160,33	168	80	135	84	55	-
44 H 300	10F			44	177,87	176,50	184	80	150	84	55	-	20	95
48 H 300	10F			48	194,04	192,67	200	85	170	84	55	-	20	100
SENZA FLANGIA	60 H 300		11	60	242,55	241,18	-	100	216	86	55	-	20	-
	72 H 300		11	72	291,06	289,69	-	100	263	86	55	-	20	-
	84 H 300		11	84	339,57	338,20	-	100	312	86	55	-	20	-
	96 H 300		11	96	388,08	386,71	-	100	360	86	55	-	20	-
	120 H 300		11	120	485,10	483,73	-	110	458	86	65	-	24	-

PULEGGE DENTATE POWER GRIP® PER CINGHIE POSITIVE BUSSOLA CONICA TAPER-LOCK® "FOSFATATE"

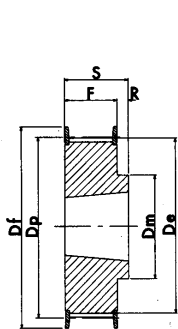
Materiali impiegati per la costruzione:

Acciaio: C 40 UNI 7845

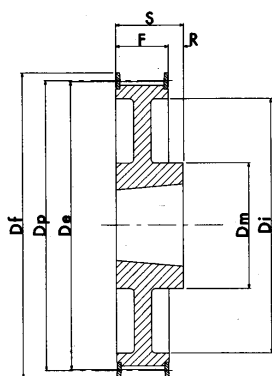
Ghisa: G 20 UNI 5007

Interpretazione della codifica:

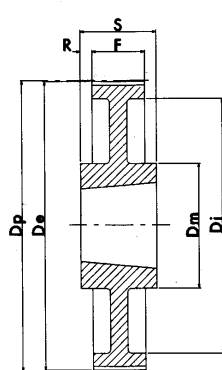
TL 30 L 100 { TL Taper Lock®
30 N° denti
L passo cinghia
100 larghezza cinghia in pollici



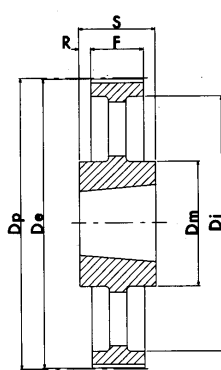
ESECUZIONE 1F



ESECUZIONE 2F



ESECUZIONE 3

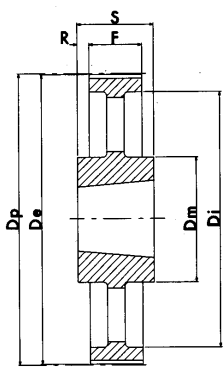


ESECUZIONE 4

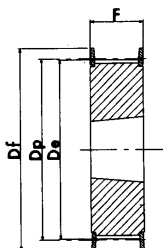
L 050 PASSO 3/8" (mm 9,52)

CARATTERISTICHE	TIPO	ESEC	BUSSOLA	FORO MAX	Dp PRIMITIVO	De ESTERNO	Df FLANGIA	Dm MOZZO	Di	F	S	R	N° FLANGIA	
ACCIAIO	CON FLANGIA	TL 18 L 050	1F	1108	28	54,57	53,81	60	45	-	19,0	22,0	3	58
		TL 19 L 050	1F	1108	28	57,61	56,84	64	45	-	19,0	22,0	3	59
		TL 20 L 050	1F	1108	28	60,64	59,88	66,5	48	-	19,0	22,0	3	60
		TL 21 L 050	1F	1108	28	63,67	62,91	70	48	-	19,0	22,0	3	61
		TL 22 L 050	1F	1108	28	66,70	65,94	75	51	-	19,0	22,0	3	62
		TL 23 L 050	1F	1108	28	69,73	68,97	79	54	-	19,0	22,0	3	63
		TL 24 L 050	1F	1108	28	72,77	72,00	79	54	-	19,0	22,0	3	63
		TL 25 L 050	1F	1108	28	75,80	75,04	82,5	56	-	19,0	22,0	3	64
		TL 26 L 050	1F	1108	28	78,83	78,07	86	60	-	19,0	22,0	3	65
		TL 27 L 050	1F	1108	28	81,86	81,10	86	62	-	19,0	22,0	3	65
		TL 28 L 050	1F	1108	28	84,89	84,13	91	65	-	19,0	22,0	3	66
		TL 30 L 050	1F	1108	28	90,96	90,20	97	70	-	19,0	22,0	3	68
		TL 32 L 050	1F	1108	28	97,02	96,26	102	74	-	19,0	22,0	3	70
		TL 36 L 050	1F	1108	28	109,15	108,39	115	85	-	19,0	22,0	3	74
TL 40 L 050	1F	1610	42	121,28	120,51	128	97	-	19,0	25,0	6	78		
TL 44 L 050	2F	1610	42	133,40	132,64	142	88	110	19,0	25,0	6	81		
TL 48 L 050	2F	1610	42	145,53	147,77	150	88	120	19,0	25,0	6	85		
GHISA	SENZA FLANGIA	TL 60 L 050	3	1610	42	181,91	181,15	-	92	166	19,0	25,0	3	-
		TL 72 L 050	4	1610	42	218,30	217,53	-	92	202	19,0	25,0	3	-
		TL 84 L 050	4	1610	42	254,68	253,90	-	92	236	19,0	25,0	3	-
		TL 96 L 050	4	2012	50	291,06	290,30	-	106	270	19,0	32,0	6,5	-
		TL 120 L 050	4	2012	50	363,83	363,07	-	106	343	19,0	32,0	6,5	-

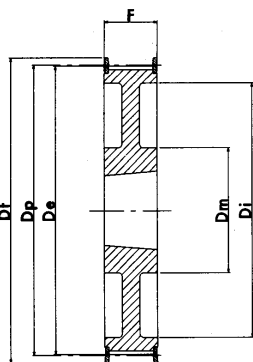
PULEGGE DENTATE POWER GRIP® PER CINGHIE POSITIVE BUSSOLA CONICA TAPER-LOCK® "FOSFATATE"



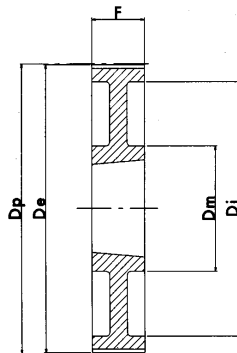
ESECUZIONE 4



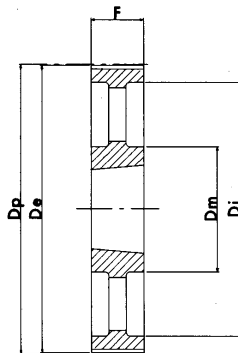
ESECUZIONE 5F



ESECUZIONE 6F



ESECUZIONE 7

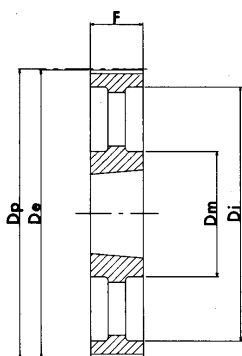


ESECUZIONE 8

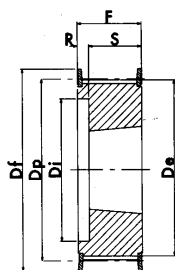
L 075 PASSO 3/8" (mm 9,52)

CARATTERISTICHE	TIPO	ESEC	BUSSOLA	FORO MAX	Dp PRIMITIVO	De ESTERNO	Df FLANGIA	Dm MOZZO	Di	F	S	R	N° FLANGIA	
ACCIAIO	CON FLANGIA	TL 18 L 075	5F	1108	28	54,57	53,81	60	-	-	25,0	25,0	-	58
		TL 19 L 075	5F	1108	28	57,61	56,84	64	-	-	25,0	25,0	-	59
		TL 20 L 075	5F	1108	28	60,64	59,88	66,5	-	-	25,0	25,0	-	60
		TL 21 L 075	5F	1108	28	63,67	62,91	70	-	-	25,0	25,0	-	61
		TL 22 L 075	5F	1108	28	66,70	65,94	75	-	-	25,0	25,0	-	62
		TL 23 L 075	5F	1108	28	69,73	68,97	79	-	-	25,0	25,0	-	63
		TL 24 L 075	5F	1108	28	72,77	72,00	79	-	-	25,0	25,0	-	63
		TL 25 L 075	5F	1108	28	75,80	75,04	82,5	-	-	25,0	25,0	-	64
		TL 26 L 075	5F	1108	28	78,83	78,07	86	-	-	25,0	25,0	-	65
		TL 27 L 075	5F	1108	28	81,86	81,10	86	-	-	25,0	25,0	-	65
		TL 28 L 075	5F	1108	28	84,89	84,13	91	-	-	25,0	25,0	-	66
		TL 30 L 075	5F	1108	28	90,96	90,20	97	-	-	25,0	25,0	-	68
		TL 32 L 075	5F	1108	28	97,02	96,26	102	-	-	25,0	25,0	-	70
		TL 36 L 075	5F	1610	42	109,15	108,39	115	-	-	25,0	25,0	-	74
		TL 40 L 075	5F	1610	42	121,28	120,51	128	-	-	25,0	25,0	-	78
		TL 44 L 075	6F	1610	42	133,40	132,64	142	90	110	25,0	25,0	-	81
TL 48 L 075	6F	1610	42	145,53	144,77	150	92	120	25,0	25,0	-	85		
GHISA	SENZA FLANGIA	TL 60 L 075	7	1610	42	181,91	181,15	-	92	166	25,0	25,0	-	-
		TL 72 L 075	8	1610	42	218,30	217,53	-	92	202	25,0	25,0	-	-
		TL 84 L 075	4	2012	50	254,68	253,90	-	106	236	25,0	32,0	3,5	-
		TL 96 L 075	4	2012	50	291,06	290,30	-	106	270	25,0	32,0	3,5	-
		TL 120 L 075	4	2012	50	363,83	363,07	-	106	343	25,0	32,0	3,5	-

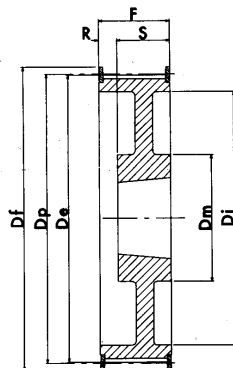
PULEGGE DENTATE POWER GRIP® PER CINGHIE POSITIVE BUSSOLA CONICA TAPER-LOCK® "FOSFATATE"



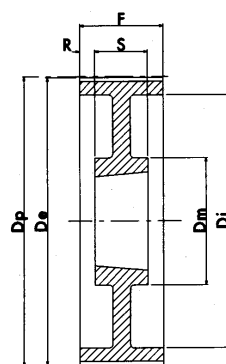
ESECUZIONE 8



ESECUZIONE 9F



ESECUZIONE 10F

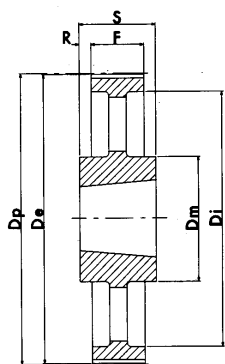


ESECUZIONE 11

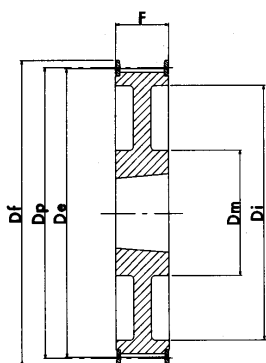
L 100 PASSO 3/8" (mm 9,52)

CARATTERISTICHE	TIPO	ESEC	BUSSOLA	FORO MAX	Dp PRIMITIVO	De ESTERNO	Df FLANGIA	Dm MOZZO	Di	F	S	R	N° FLANGIA	
ACCIAIO	CON FLANGIA	TL 18 L 100	9F	1108	28	54,57	53,81	60	-	38	31,0	22,0	9,0	58
		TL 19 L 100	9F	1108	28	57,61	56,84	64	-	38	31,0	22,0	9,0	59
		TL 20 L 100	9F	1108	28	60,64	59,88	66,5	-	45	31,0	22,0	9,0	60
		TL 21 L 100	9F	1108	28	63,67	62,91	70	-	45	31,0	22,0	9,0	61
		TL 22 L 100	9F	1108	28	66,70	65,94	75	-	48	31,0	22,0	9,0	62
		TL 23 L 100	9F	1108	28	69,73	68,97	79	-	52	32,0	22,0	10,0	63
		TL 24 L 100	9F	1108	28	72,77	72,00	79	-	52	32,0	22,0	10,0	63
		TL 25 L 100	9F	1108	28	75,80	75,04	82,5	-	54	32,0	22,0	10,0	64
		TL 26 L 100	9F	1108	28	78,83	78,07	86	-	60	32,0	22,0	10,0	65
		TL 27 L 100	9F	1108	28	81,86	81,10	86	-	60	32,0	22,0	10,0	65
		TL 28 L 100	9F	1108	28	84,89	84,13	91	-	65	32,0	22,0	10,0	66
		TL 30 L 100	9F	1210	32	90,96	90,20	97	-	71	32,0	25,0	7,0	68
		TL 32 L 100	9F	1210	32	97,02	96,26	102	-	75	32,0	25,0	7,0	70
		TL 36 L 100	9F	1610	42	109,15	108,39	115	-	86	32,0	25,0	7,0	74
		TL 40 L 100	9F	1610	42	121,28	120,51	128	-	96	32,0	25,0	7,0	78
		TL 44 L 100	10F	1610	42	133,40	132,64	142	90	110	32,0	25,0	7,0	81
		TL 48 L 100	10F	1610	42	145,53	144,77	150	92	120	32,0	25,0	7,0	85
		GHISA	SENZA FLANGIA	TL 60 L 100	11	1610	42	181,91	181,15	-	92	166	32,0	25,0
TL 72 L 100	8			2012	50	218,30	217,53	-	106	202	32,0	32,0	-	-
TL 84 L 100	8			2012	50	254,68	253,90	-	106	236	32,0	32,0	-	-
TL 96 L 100	8			2012	50	291,06	290,30	-	106	270	32,0	32,0	-	-
TL 120 L 100	8			2012	50	363,83	363,07	-	106	343	32,0	32,0	-	-

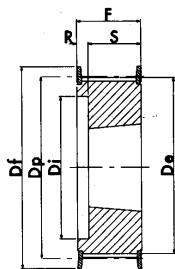
PULEGGE DENTATE POWER GRIP® PER CINGHIE POSITIVE BUSSOLA CONICA TAPER-LOCK® "FOSFATATE"



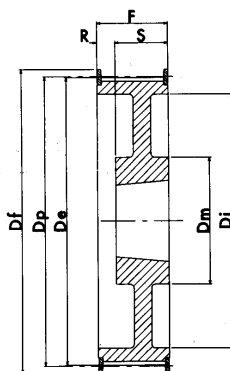
ESECUZIONE 4



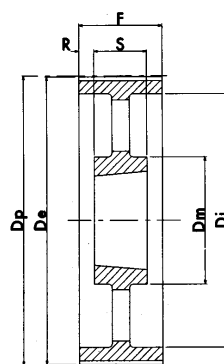
ESECUZIONE 6F



ESECUZIONE 9F



ESECUZIONE 10F



ESECUZIONE 12

H 100 PASSO 1/2" (mm 12,7)

CARATTERISTICHE	TIPO	ESEC	BUSSOLA	FORO MAX	Dp PRIMITIVO	De ESTERNO	Df FLANGIA	Dm MOZZO	Di	F	S	R	N° FLANGIA	
ACCIAIO	CON FLANGIA	TL 16 H 100	9F	1108	28	64,68	63,31	70	-	45	31,0	22,0	9,0	61
		TL 18 H 100	9F	1210	32	72,77	71,39	79	-	52	31,0	25,0	6,0	63
		TL 19 H 100	9F	1210	32	76,81	74,44	82,5	-	56	31,0	25,0	6,0	64
		TL 20 H 100	9F	1210	32	80,55	79,48	87	-	60	31,0	25,0	6,0	76
		TL 21 H 100	9F	1210	32	84,89	83,52	91	-	64	32,0	25,0	7,0	66
		TL 22 H 100	9F	1210	32	88,94	87,56	94	-	67	32,0	25,0	7,0	67
		TL 23 H 100	9F	1610	42	92,98	91,61	97	-	70	32,0	25,0	7,0	68
		TL 24 H 100	9F	1610	42	97,02	95,65	102	-	73,5	32,0	25,0	7,0	70
		TL 25 H 100	9F	1610	42	101,06	99,69	106	-	77	32,0	25,0	7,0	71
		TL 26 H 100	9F	1610	42	105,11	103,73	112	-	82	32,0	25,0	7,0	72
		TL 27 H 100	9F	1610	42	109,15	107,78	115	-	85	32,0	25,0	7,0	74
		TL 28 H 100	9F	1610	42	113,19	111,82	120	-	90,5	32,0	25,0	7,0	75
		TL 30 H 100	9F	1610	42	121,28	119,90	128	-	98	32,0	25,0	7,0	78
		TL 32 H 100	10F	1610	42	129,36	127,99	135	80	106	32,0	25,0	7,0	80
		TL 36 H 100	10F	1610	42	145,53	144,16	150	92	121	32,0	25,0	7,0	85
		TL 40 H 100	10F	1610	42	161,70	160,33	168	92	138	32,0	25,0	7,0	90
		TL 44 H 100	6F	2012	50	177,87	176,50	184	106	152	32,0	32,0	-	95
		TL 48 H 100	6F	2012	50	194,04	192,67	200	106	169	32,0	32,0	-	100
GHISA	SENZA FLANGIA	TL 60 H 100	12	2012	50	242,55	241,18	-	106	223	34,0	32,0	1,0	-
		TL 72 H 100	12	2012	50	291,06	289,69	-	106	270	34,0	32,0	1,0	-
		TL 84 H 100	12	2012	50	339,57	338,20	-	106	318	34,0	32,0	1,0	-
		TL 96 H 100	4	2517	60	388,08	386,71	-	119	366	34,0	45,0	5,5	-
		TL 120 H 100	4	2517	60	485,10	483,73	-	119	462	34,0	45,0	5,5	-

PULEGGE DENTATE POWER GRIP®

PER CINGHIE POSITIVE BUSSOLA CONICA

TAPER-LOCK® "FOSFATATE"

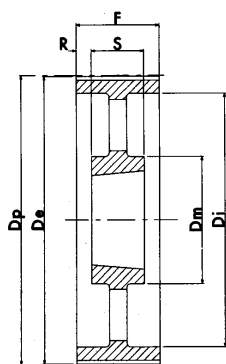
H 150 PASSO 1/2" (mm 12,7)

CARATTERISTICHE	TIPO	ESEC	BUSSOLA	FORO MAX	Dp PRIMITIVO	De ESTERNO	Df FLANGIA	Dm MOZZO	Di	F	S	R	N° FLANGIA	
ACCIAIO	CON FLANGIA	TL 18 H 150	9F	1210	32	72,77	71,39	79	-	52	45,0	25,0	20,0	63
		TL 19 H 150	9F	1210	32	76,81	74,44	82,5	-	56	45,0	25,0	20,0	64
		TL 20 H 150	9F	1210	32	80,55	79,48	87	-	60	45,0	25,0	20,0	76
		TL 21 H 150	9F	1210	32	84,89	83,52	91	-	64	45,0	25,0	20,0	66
		TL 22 H 150	9F	1210	32	88,94	87,56	94	-	67	45,0	25,0	20,0	67
		TL 23 H 150	9F	1610	42	92,98	91,61	97	-	70	45,0	25,0	20,0	68
		TL 24 H 150	9F	1610	42	97,02	95,65	102	-	73,5	45,0	25,0	20,0	70
		TL 25 H 150	9F	1610	42	101,06	99,69	106	-	77	45,0	25,0	20,0	71
		TL 26 H 150	9F	1610	42	105,11	103,73	112	-	82	45,0	25,0	20,0	72
		TL 27 H 150	9F	1610	42	109,15	107,78	115	-	85	45,0	25,0	20,0	74
		TL 28 H 150	9F	1610	42	113,19	111,82	120	-	90,5	45,0	25,0	20,0	75
		TL 30 H 150	9F	1610	42	121,28	119,90	128	-	98	45,0	25,0	20,0	78
		TL 32 H 150	10F	1610	42	129,36	127,99	135	80	106	45,0	25,0	20,0	80
		TL 36 H 150	10F	1610	42	145,53	144,16	150	92	121	45,0	25,0	20,0	85
		TL 40 H 150	10F	1610	42	161,70	160,33	168	92	138	45,0	25,0	20,0	90
		TL 44 H 150	10F	2012	50	177,87	176,50	184	106	152	45,0	32,0	13,0	95
		TL 48 H 150	10F	2012	50	194,04	192,67	200	106	169	45,0	32,0	13,0	100
		GHISA	SENZA FLANGIA	TL 60 H 150	12	2012	50	242,55	241,18	-	106	223	46,0	32,0
TL 72 H 150	12			2012	50	291,06	289,69	-	106	270	46,0	32,0	7,0	-
TL 84 H 150	12			2012	50	339,57	338,20	-	106	318	46,0	32,0	7,0	-
TL 96 H 150	12			2517	60	388,08	386,71	-	119	366	46,0	45,0	0,5	-
TL 120 H 150	12			2517	60	485,10	483,73	-	119	462	46,0	45,0	0,5	-

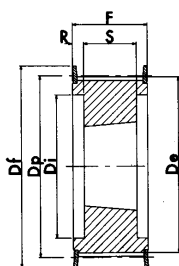
H 200 PASSO 1/2" (mm 12,7)

CARATTERISTICHE	TIPO	ESEC	BUSSOLA	FORO MAX	Dp PRIMITIVO	De ESTERNO	Df FLANGIA	Dm MOZZO	Di	F	S	R	N° FLANGIA	
ACCIAIO	CON FLANGIA	TL 18 H 200	9F	1210	32	72,77	71,39	79	-	52	58,0	25,0	33,0	63
		TL 19 H 200	9F	1210	32	76,81	74,44	82,5	-	56	58,0	25,0	33,0	64
		TL 20 H 200	9F	1610	42	80,85	79,48	87	-	62	58,0	25,0	33,0	76
		TL 21 H 200	9F	1610	42	84,89	83,52	91	-	64	58,0	25,0	33,0	66
		TL 22 H 200	9F	1610	42	88,94	87,56	94	-	67	58,0	25,0	33,0	67
		TL 23 H 200	9F	1610	42	92,98	91,61	97	-	70	58,0	25,0	33,0	68
		TL 24 H 200	9F	1610	42	97,02	95,65	102	-	73,5	58,0	25,0	33,0	70
		TL 25 H 200	9F	1610	42	101,06	99,69	106	-	77,0	58,0	25,0	33,0	71
		TL 26 H 200	9F	1610	42	105,11	103,73	112	-	82	58,0	25,0	33,0	72
		TL 27 H 200	9F	1610	42	109,15	107,78	115	-	85	58,0	25,0	33,0	74
		TL 28 H 200	9F	1610	42	113,19	111,82	120	-	90,5	58,0	25,0	33,0	75
		TL 30 H 200	9F	1610	42	121,28	119,90	128	-	98	58,0	25,0	33,0	78
		TL 32 H 200	9F	2012	50	129,36	127,99	135		106	58,0	32,0	26,0	80
		TL 36 H 200	10F	2012	50	145,53	144,16	150	102	121	58,0	32,0	26,0	85
		TL 40 H 200	10F	2012	50	161,70	160,33	168	106	138	58,0	32,0	26,0	90
		TL 44 H 200	10F	2012	50	177,87	176,50	184	106	152	58,0	32,0	26,0	95
		TL 48 H 200	10F	2517	60	194,04	192,67	200	119	168	58,0	45,0	13,0	100
		GHISA	SENZA FLANGIA	TL 60 H 200	12	2517	60	242,55	241,18	-	119	223	60,0	45,0
TL 72 H 200	12			2517	60	291,06	289,69	-	119	270	60,0	45,0	7,5	-
TL 84 H 200	12			2517	60	339,57	338,20	-	119	320	60,0	45,0	7,5	-
TL 96 H 200	12			2517	60	388,08	386,71	-	119	366	60,0	45,0	7,5	-
TL 120 H 200	12			2517	60	485,10	483,73	-	119	462	60,0	45,0	7,5	-

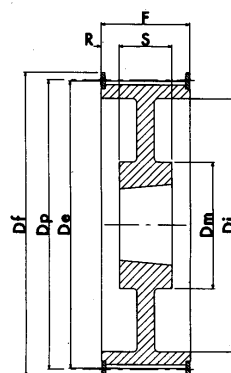
PULEGGE DENTATE POWER GRIP® PER CINGHIE POSITIVE BUSSOLA CONICA TAPER-LOCK® "FOSFATATE"



ESECUZIONE 12



ESECUZIONE 13F

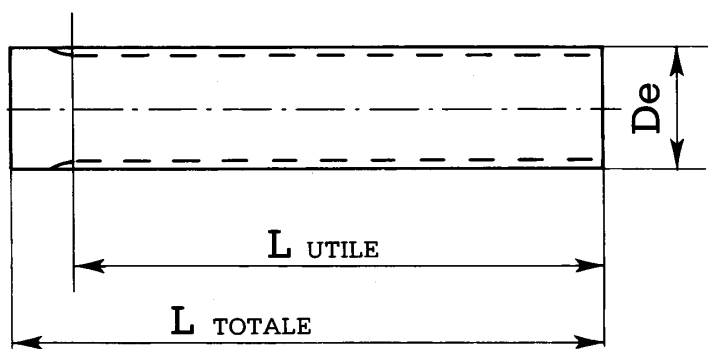


ESECUZIONE 14F

H 300 PASSO 1/2" (mm 12,7)

CARATTERISTICHE	TIPO	ESEC	BUSSOLA	FORO MAX	Dp PRIMITIVO	De ESTERNO	Df FLANGIA	Dm MOZZO	Di	F	S	R	N° FLANGIA	
ACCIAIO	CON FLANGIA	TL 20 H 300	13F	1615	42	80,85	79,48	87	-	64,5	84,0	38,0	23,0	76
		TL 21 H 300	13F	1615	42	84,89	83,52	91	-	65	84,0	38,0	23,0	66
		TL 22 H 300	13F	1615	42	88,94	87,56	94	-	67	84,0	38,0	23,0	67
		TL 23 H 300	13F	1615	42	92,98	91,61	97	-	70	84,0	38,0	23,0	68
		TL 24 H 300	13F	1615	42	97,02	95,65	102	-	73,5	84,0	38,0	23,0	70
		TL 25 H 300	13F	1615	42	101,06	99,69	106	-	77	84,0	38,0	23,0	71
		TL 26 H 300	13F	1615	42	105,11	103,73	112	-	82	84,0	38,0	23,0	72
		TL 27 H 300	13F	2012	50	109,15	107,78	115	-	85	84,0	32,0	26,0	74
		TL 28 H 300	13F	2012	50	113,19	111,82	120	-	90,5	84,0	32,0	26,0	75
		TL 30 H 300	13F	2012	50	121,28	119,90	128	-	98	84,0	32,0	26,0	78
		TL 32 H 300	13F	2517	60	129,36	127,99	135	-	106	84,0	45,0	19,5	80
		TL 36 H 300	13F	2517	60	145,53	144,16	150	-	121	84,0	45,0	19,5	85
		TL 40 H 300	13F	2517	60	161,70	160,33	168	-	138	84,0	45,0	19,5	90
		TL 44 H 300	14F	2517	60	177,87	176,50	184	119	150	86,0	45,0	20,5	95
		TL 48 H 300	14F	2517	60	194,04	192,67	200	119	165	86,0	45,0	20,5	100
GHISA	SENZA FLANGIA	TL 60 H 300	12	2517	60	242,55	241,18	-	119	223	86,0	45,0	20,5	-
		TL 72 H 300	12	2517	60	291,06	289,69	-	119	270	86,0	45,0	20,5	-
		TL 84 H 300	12	2517	60	339,57	338,20	-	119	320	86,0	45,0	20,5	-
		TL 96 H 300	12	3030	75	388,08	386,71	-	150	362	86,0	76,0	5,0	-
		TL 120 H 300	12	3030	75	485,10	483,73	-	150	460	86,0	76,0	5,0	-

BARRE DENTATE POWER GRIP® PER CINGHIE POSITIVE



MXL 0,080" (mm 2,032)

DESCRIZIONE	N° DENTI	De ESTERNO	L UTILE	L TOTALE
MXL 12	12	7,26	50	75
MXL 14	14	8,56	50	75
MXL 15	15	9,19	50	75
MXL 16	16	9,83	50	75
MXL 18	18	11,12	50	75
MXL 20	20	12,42	90	120
MXL 22	22	13,72	125	140
MXL 24	24	15,01	125	140
MXL 25	25	15,67	125	140
MXL 26	26	16,31	125	140
MXL 28	28	17,60	125	140
MXL 30	30	18,90	125	140
MXL 32	32	20,19	125	140
MXL 34	34	21,49	125	140
MXL 36	36	22,78	132	140
MXL 38	38	24,08	132	140
MXL 40	40	25,37	132	140
MXL 42	42	26,67	140	140
MXL 44	44	27,94	140	140
MXL 45	45	28,60	140	140
MXL 48	48	30,53	140	140
MXL 50	50	31,83	140	140
MXL 60	60	38,30	160	160
MXL 70	70	44,78	160	160
MXL 72	72	46,05	160	160

XL 1/5" (mm 5,08)

DESCRIZIONE	N° DENTI	De ESTERNO	L UTILE	L TOTALE
XL 10	10	15,66	125	140
XL 11	11	17,28	125	140
XL 12	12	18,90	125	140
XL 13	13	20,51	125	140
XL 14	14	22,13	132	140
XL 15	15	23,75	132	140
XL 16	16	25,36	140	140
XL 17	17	26,98	140	140
XL 18	18	28,60	140	140
XL 19	19	30,22	140	140
XL 20	20	31,83	140	140
XL 21	21	33,45	160	160
XL 22	22	35,07	160	160
XL 23	23	36,60	160	160
XL 24	24	38,30	160	160
XL 25	25	39,93	160	160
XL 26	26	41,53	160	160
XL 27	27	43,15	160	160
XL 28	28	44,77	160	160
XL 29	29	46,39	160	160
XL 30	30	48,00	160	160
XL 32	32	51,24	160	160
XL 33	33	52,76	160	160
XL 34	34	54,47	160	160
XL 35	35	56,09	160	160
XL 36	36	57,70	160	160
XL 38	38	60,94	160	160
XL 39	39	62,56	160	160
XL 40	40	64,17	160	160
XL 41	41	65,79	160	160
XL 42	42	67,41	160	160
XL 43	43	69,02	160	160
XL 44	44	70,64	160	160
XL 48	48	77,11	160	160
XL 56	56	90,04	160	160
XL 60	60	96,51	160	160
XL 72	72	115,92	160	160

L 3/8" (mm 9,525)

DESCRIZIONE	N° DENTI	De ESTERNO	L UTILE	L TOTALE
L 10	10	29,56	140	140
L 11	11	32,59	140	140
L 12	12	35,62	160	160
L 13	13	38,65	160	160
L 14	14	41,68	160	160
L 15	15	44,72	160	160
L 16	16	47,75	160	160
L 17	17	50,78	160	160
L 18	18	53,81	160	160
L 19	19	56,84	160	160
L 20	20	59,88	160	160
L 21	21	62,91	160	160
L 22	22	65,94	160	160
L 23	23	68,97	160	160
L 24	24	72,00	160	160
L 27	27	81,10	160	160
L 30	30	90,20	160	160

N.B.

Le barre passo MXL vengono costruite solo in Alluminio adatto per l'ossidazione dura a spessore.

Le barre passo XL - L vengono costruite solo in Acciaio e in Alluminio adatto per l'ossidazione dura a spessore.

CINGHIE DENTATE

POWER GRIP® - HTD®

Le cinghie dentate HTD® vengono costruite nei seguenti passi: 3mm, 5mm, 8mm, 14mm, 20mm.

I passi 3mm, 5mm, 8mm, 14mm, vengono commercializzati dalla **CHIARAVALLI Trasmissioni S.p.A.** in una vasta gamma di lunghezze e larghezze.

Le dimensioni principali di una cinghia sono:

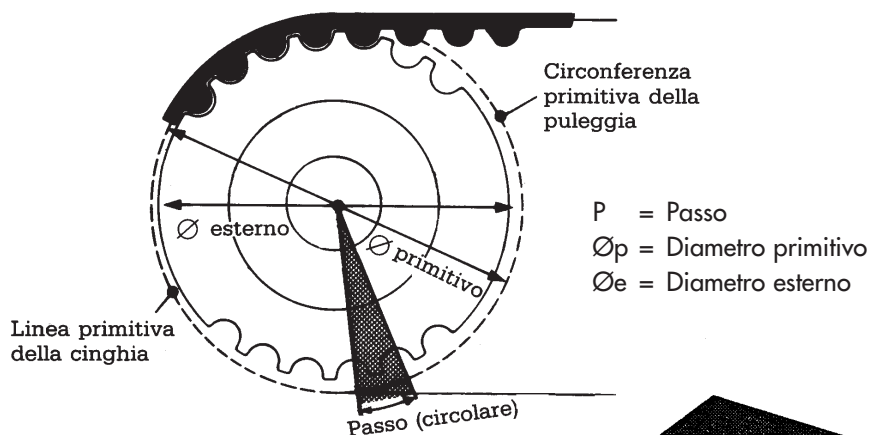
LUNGHEZZA PRIMITIVA - PASSO - LARGHEZZA

Il prodotto del passo per il numero dei denti della stessa cinghia corrisponde alla lunghezza primitiva della cinghia.

Il passo della cinghia è dato dalla distanza, in mm, tra gli assi di due denti adiacenti, misurati sulla linea primitiva della cinghia.

La linea primitiva teorica d'una cinghia HTD® è situata a metà dei cavetti resistenti.

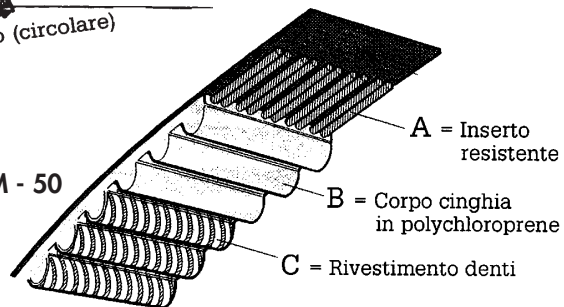
Caratteristiche delle cinghie



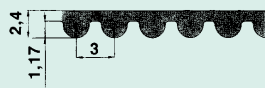
Identificazione di una cinghia

Sviluppo primitivo
Passo in mm
Larghezza cinghia

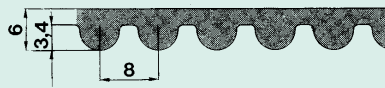
1040 - 8M - 50



HTD® 3M



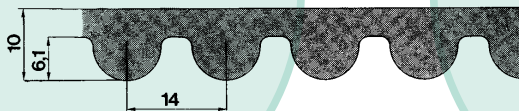
HTD® 8M



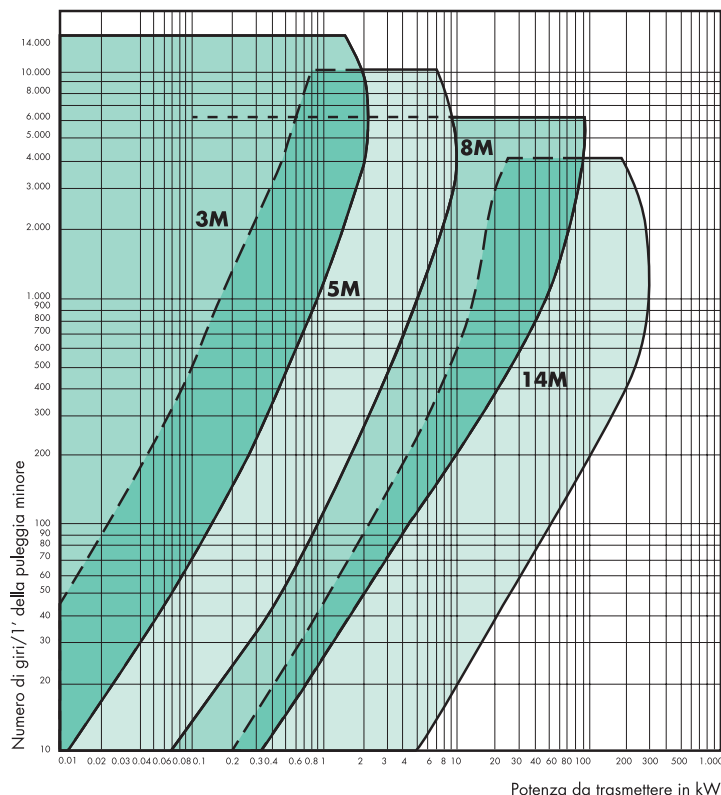
HTD® 5M



HTD® 14M



Le tolleranze della cinghia sullo sviluppo primitivo sono ristrette, quindi per avere una buona tensione della stessa bisogna avere la possibilità di variare l'interasse o di tensionare la cinghia con un rullo tenditore.



LARGHEZZE CINGHIE HTD®

PASSO	HTD® 3M	HTD® 5M	HTD® 8M	HTD® 14M
LARGHEZZE CINGHIE mm	6 9 15	9 15 25	20 30 50 85	40 55 85 115 170

TOLLERANZE SUGLI INTERASSI

LUNGHEZZA PRIMITIVA DELLE CINGHIE	TOLLERANZA SULL'INTERASSE mm
da 127 a 254	±0,2
da 255 a 381	±0,23
da 382 a 508	±0,25
da 509 a 762	±0,30
da 763 a 1016	±0,33
da 1017 a 1270	±0,38
da 1271 a 1524	±0,41
da 1525 a 1778	±0,43
oltre 1779	aggiungere ± 0,03 per ogni 254 mm di lunghezza supplementare

TOLLERANZE SULLA LUNGHEZZA DELLE CINGHIE HTD®

LARGHEZZA DELLA CINGHIA	TOLLERANZA mm PER LUNGHEZZE da 0 a 838,2	TOLLERANZA mm PER LUNGHEZZE da 838,2 a 1676,4	TOLLERANZA mm PER LUNGHEZZE da 1676,4 e oltre
da 11,1 a 38,1	+ 0,8 - 0,8	+ 0,8 - 1,2	+ 0,8 - 1,2
da 38,2 a 50,8	+ 0,8 - 1,2	+ 1,2 - 1,2	+ 1,2 - 1,6
da 50,9 a 63,5	+ 1,2 - 1,2	+ 1,2 - 1,6	+ 1,6 - 1,6
da 63,6 a 76,2	+ 1,2 - 1,6	+ 1,6 - 1,6	+ 1,6 - 2,0
da 76,3 a 101,6	+ 1,6 - 1,6	+ 1,6 - 2,0	+ 2,0 - 2,0
da 101,7 a 177,8	+ 2,4 - 2,4	+ 1,6 - 2,0	+ 2,0 - 2,0
oltre 177,9			+ 4,8 - 6,4

CINGHIE DENTATE POWER GRIP® "GATES"

HTD® 3M (passo 3mm)			HTD® 5M (passo 5mm)			HTD® 8M (passo 8mm)			HTD® 14M (passo 14mm)		
N° DENTI	LUNGH. PRIMITIVA	TIPO DI CINGHIA	N° DENTI	LUNGH. PRIMITIVA	TIPO DI CINGHIA	N° DENTI	LUNGH. PRIMITIVA	TIPO DI CINGHIA	N° DENTI	LUNGH. PRIMITIVA	TIPO DI CINGHIA
50	150	150-3M	36	180	180-5M	60	480	480-8M	69	966	966-14M
55	165	165-3M	45	225	225-5M	70	560	560-8M	85	1190	1190-14M
60	180	180-3M	51	255	255-5M	75	600	600-8M	100	1400	1400-14M
65	195	195-3M	56	280	280-5M	80	640	640-8M	115	1610	1610-14M
70	210	210-3M	60	300	300-5M	90	720	720-8M	127	1778	1778-14M
75	225	225-3M	61	305	305-5M	100	800	800-8M	135	1890	1890-14M
84	252	252-3M	65	325	325-5M	110	880	880-8M	150	2100	2100-14M
85	255	255-3M	68	340	340-5M	115	920	920-8M	165	2310	2310-14M
95	285	285-3M	70	350	350-5M	120	960	960-8M	175	2450	2450-14M
100	300	300-3M	75	375	375-5M	130	1040	1040-8M	185	2590	2590-14M
110	330	330-3M	80	400	400-5M	140	1120	1120-8M	200	2800	2800-14M
119	357	357-3M	85	425	425-5M	150	1200	1200-8M	225	3150	3150-14M
128	384	384-3M	90	450	450-5M	160	1280	1280-8M	250	3500	3500-14M
140	420	420-3M	95	475	475-5M	180	1440	1440-8M	275	3850	3850-14M
149	447	447-3M	100	500	500-5M	200	1600	1600-8M	309	4326	4326-14M
158	474	474-3M	105	525	525-5M	220	1760	1760-8M	327	4578	4578-14M
171	513	513-3M	110	550	550-5M	225	1800	1800-8M			
188	564	564-3M	112	560	560-5M	250	2000	2000-8M			
204	612	612-3M	115	575	575-5M	300	2400	2400-8M			
245	735	735-3M	120	600	600-5M	325	2600	2600-8M			
246	738	738-3M	127	635	635-5M	350	2800	2800-8M			
268	804	804-3M	134	670	670-5M						
			140	700	700-5M						
			150	750	750-5M						
			160	800	800-5M						
			172	860	860-5M						
			180	900	900-5M						
			190	950	950-5M						
			196	980	980-5M						
			207	1035	1035-5M						
			210	1050	1050-5M						
			235	1175	1175-5M						
			240	1200	1200-5M						
			270	1350	1350-5M						

CINGHIE POWER GRIP® A DOPPIA DENTATURA HTD® 8M (passo 8mm) DUAL

HTD® 8M (passo 8mm)		
N° DENTI	LUNGHEZZA PRIMITIVA	TIPO DI CINGHIA
60	480	480-8M DUAL
70	560	560-8M DUAL
75	600	600-8M DUAL
80	640	640-8M DUAL
90	720	720-8M DUAL
100	800	800-8M DUAL
110	880	880-8M DUAL
120	960	960-8M DUAL
130	1040	1040-8M DUAL
140	1120	1120-8M DUAL

HTD® 8M (passo 8mm)		
N° DENTI	LUNGHEZZA PRIMITIVA	TIPO DI CINGHIA
150	1200	1200-8M DUAL
160	1280	1280-8M DUAL
180	1440	1440-8M DUAL
200	1600	1600-8M DUAL
220	1760	1760-8M DUAL
225	1800	1800-8M DUAL
250	2000	2000-8M DUAL
300	2400	2400-8M DUAL
325	2600	2600-8M DUAL
350	2800	2800-8M DUAL

Le pulegge dentate HTD® vengono costruite dalla **CHIARAVALLI Trasmissioni S.p.A.** nei passi 3mm, 5mm, 8mm, 14mm e nelle versioni:

- a) Pulegge dentate HTD® con foro iniziale (**Pilot Bore**)
- b) Pulegge dentate HTD® con bussola conica **Taper-Lock**

Identificazione di una cinghia:

34 8M 50 { 34 N° denti
8M passo in mm
50 larghezza cinghia

Identificazione di una puleggia:

TL 30 14M 55 { TL TAPER LOCK
30 N° denti
14M passo in mm
55 larghezza cinghia

VALORI DELLA EQUILBRATURA SULLE PULEGGE

Le pulegge dentate HTD® di nostra produzione non vengono equilibrate.

L'equilibratura si esegue al costo solo su richiesta.

Siamo in grado di equilibrare pulegge fino ad un diametro massimo di 560 mm con rilascio del certificato.

DIAMETRI PULEGGE	LARGHEZZA FASCIA	MAX SQUILIBRIO IN GRAMMI
da 199 - 301	60	6
da 302 - 599	60	10
da 199 - 301	da 60 - 99	10
da 302 - 599		15
da 600 - 999		20
oltre 1000		30

DIAMETRO PULEGGE	LARGHEZZA FASCIA	MAX SQUILIBRIO IN GRAMMI
da 199 - 301	da 100 - 199	20
da 302 - 599		30
da 600 - 999		40
oltre 1000		60

TOLLERANZE DI COSTRUZIONE

De puleggia	Tolleranza in mm	
da Ø 0 a Ø 30	- 0	+ 0,05
da Ø 31 a Ø 50	- 0	+ 0,08
da Ø 51 a Ø 100	- 0	+ 0,10
da Ø 101 a Ø 179	- 0	+ 0,13
da Ø 180 a Ø 300	- 0	+ 0,15
da Ø 301 a Ø 500	- 0	+ 0,18
da Ø 501 oltre	- 0	+ 0,20

ECCENTRICITÀ

Il foro e il diametro esterno devono essere concentrici in base alle tolleranze sotto indicate:

Ø esterno mm	Eccentricità totale (mm) Indicazione totale del comparatore
fino a 199	0,10
oltre 200	0,0005 per mm di diametro Questo valore non può superare la tolleranza sul Ø esterno