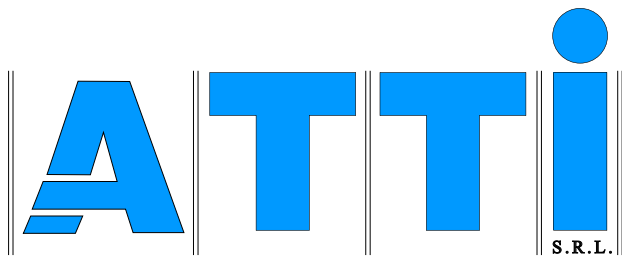


ARTICOLO DISTRIBUITO DA



Articoli Tecnici Trasmissioni Industriali

Via F.lli Cervi n°3
20063 CERNUSCO SUL NAVIGLIO
Tel .02-92106954 - 6 LINEE R.A.
Fax.02-92107261
E-mail info@atti.it
Sito: www.atti.it



- *MOTORI ASINCRONI*
- *MOTORI IN C.C.*
- *MOTORI A MAGNETI PERMANENTI*
- *MOTORI PASSO PASSO*
- *MOTORI BRUSHLESS*
- *MOTORIDUTTORI*
- *MOTOVARIATORI*
- *MARTINETTI*
- *ATTUATORI*
- *RINVII ANGOLARI*
- *LIMITATORI DI COPPIA*
- *PULEGGE A GOLE*
- *PULEGGE DENTATE*
- *PULEGGE CON BUSSOLE TAPER LOOK*
- *PULEGGE VARIABILI*
- *CINGHIE TRAPEZOIDALI*
- *CINGHIE DENTATE*
- *CINGHIE PER VARIATORI*
- *CATENE VARIE*
- *PIGNONI PER CATENE*
- *INGRANAGGI A MODULO*
- *CREMAGLIERE*
- *COPPIE CONICHE*
- *GIUNTI VARI*
- *SUPPORTI AUTOALLINEANTI*
- *SLITTE VARIE*
- *SLITTE MOTORIZZABILI*
- *RUOTE*
- *CALETTATORI*
- *MANIGLIERIA ELESA*
- *VITI T.P.N. E RELATIVE CHIOCCIOLE*
- *VITI A RICIRCOLAZIONE DI SFERE*
- *AZIONAMENTI BRUSHLESS, IN C.C. A TRANSISTOR, MOSFET, SCR, ECC.*
- *INVERTERS - SOFT START*
- *ENCODERS*
- *RIGHE OTTICHE*
- *ELETTROMAGNETI*
- *VISUALIZZATORI - POSIZIONATORI*
- *INTERPOLATORI - MISURATORI - TACHIMETRI - VOLMETRI - TEMPORIMETRI*
- *P L C E LOGICHE PROGRAMMABILI CON RELAZIVA PROGRAMMAZIONE PERSONALIZZATA*
- *QUADRI ELETTRICI*
- *RULLI E RELATIVI COMPONENTI*
- *ASPIRATORI E VENTILATORI*
- *PROFILATI IN ALLUMINIO*
- *ADESIVI INDUSTRIALI*
- *SISTEMI DI LUBRIFICAZIONE CENTRALIZZATA*

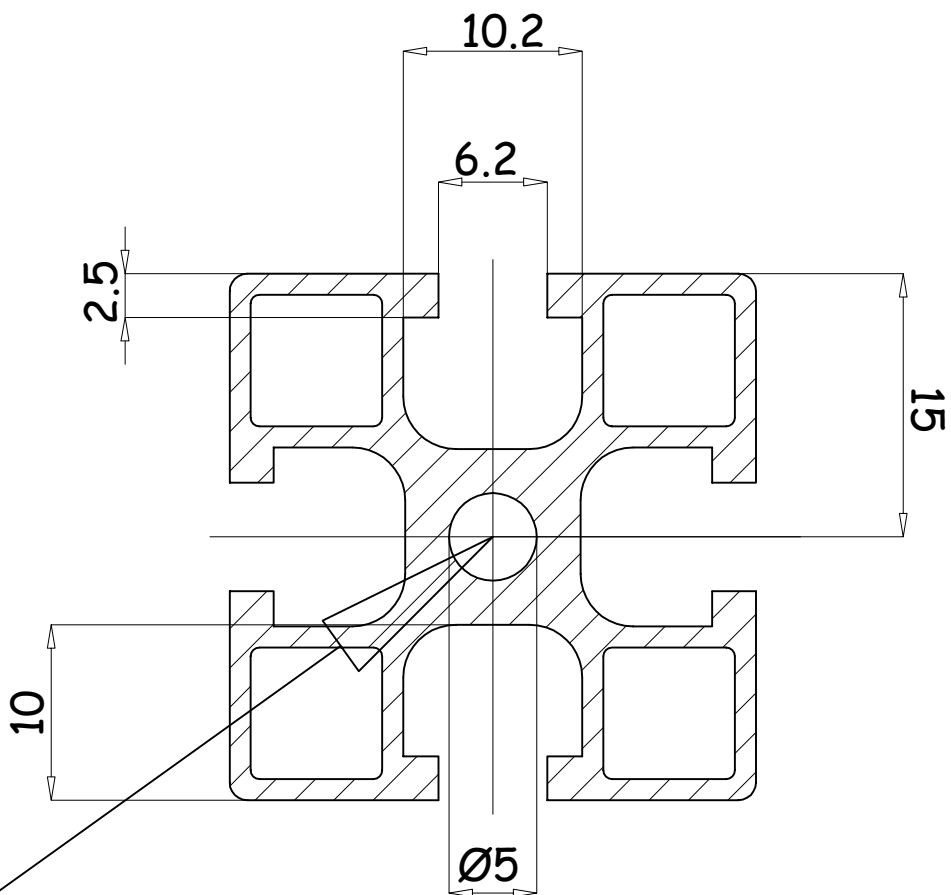
Realizzazione di trasportatori e macchine speciali con profilati di alluminio



***Linea profili e
accessori
base 30 cava 6***

QUOTE COMUNI

Dimensioni comuni ai profili cava 6

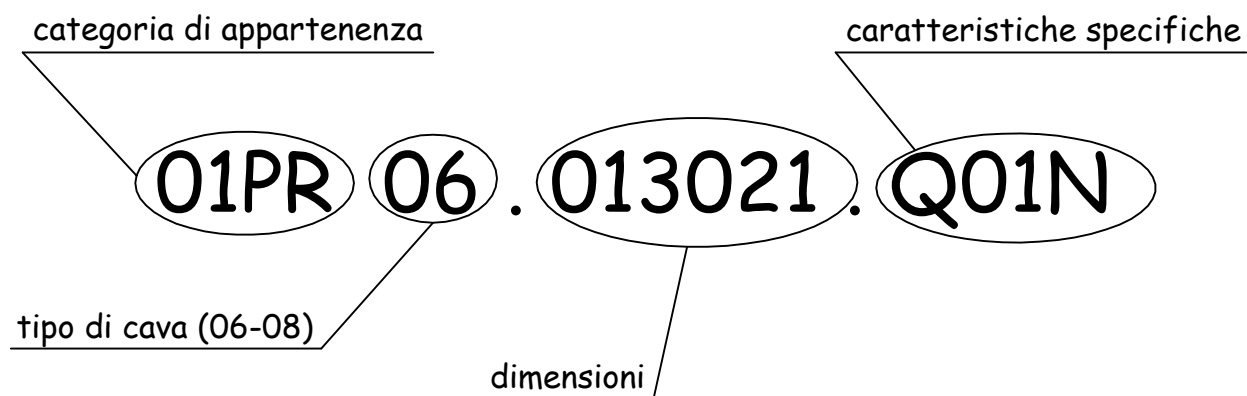


Filettare con maschio a rullare M6

14.03.03

01PR06-00

guida alla lettura dei codici



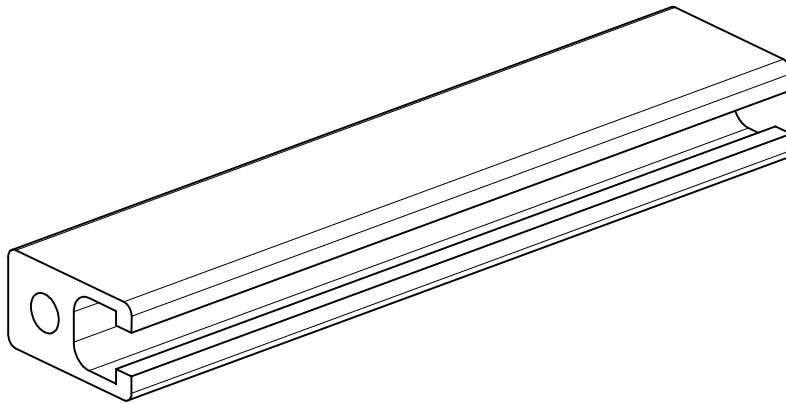
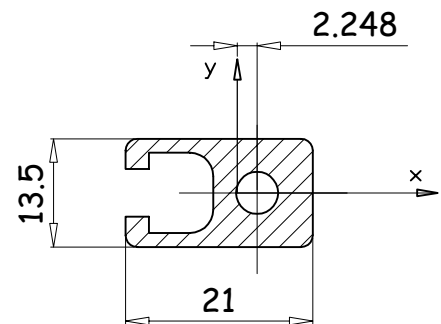
categorie	descrizione
01PR	Profili
02VT	Viti
03DQ	Dadi quadri
04AN	Angolari di fissaggio e rinforzo
05PC	Profili di chiusura cava
06TC	Tappi di chiusura
07PI	Piedi e staffaggi
08RU	Ruote
09AC	Accessori
11CA	Calamite

20.02.03

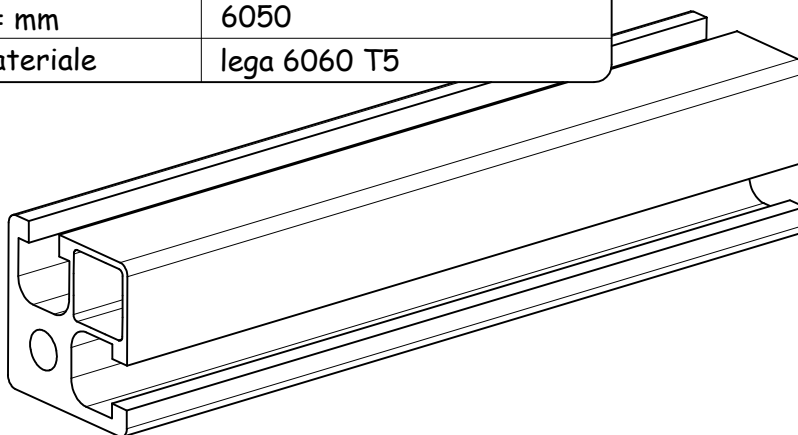
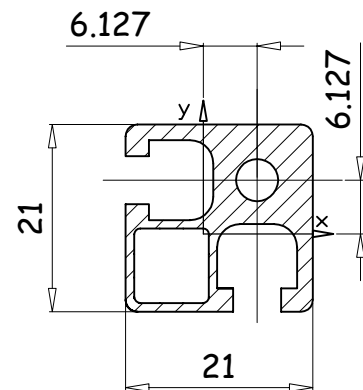
01PR06-00a

profili estrusi cava 6

Profilo 13.5 x 21	
Codice	01PR06.013021.Q01N
Peso (Kg/m)	0.478
I_{xx} Cm ⁴	0.32
I_{yy} Cm ⁴	0.60
W_{xx} Cm ³	0.50
W_{yy} Cm ³	0.46
L = mm	6050
Materiale	lega 6060 T5



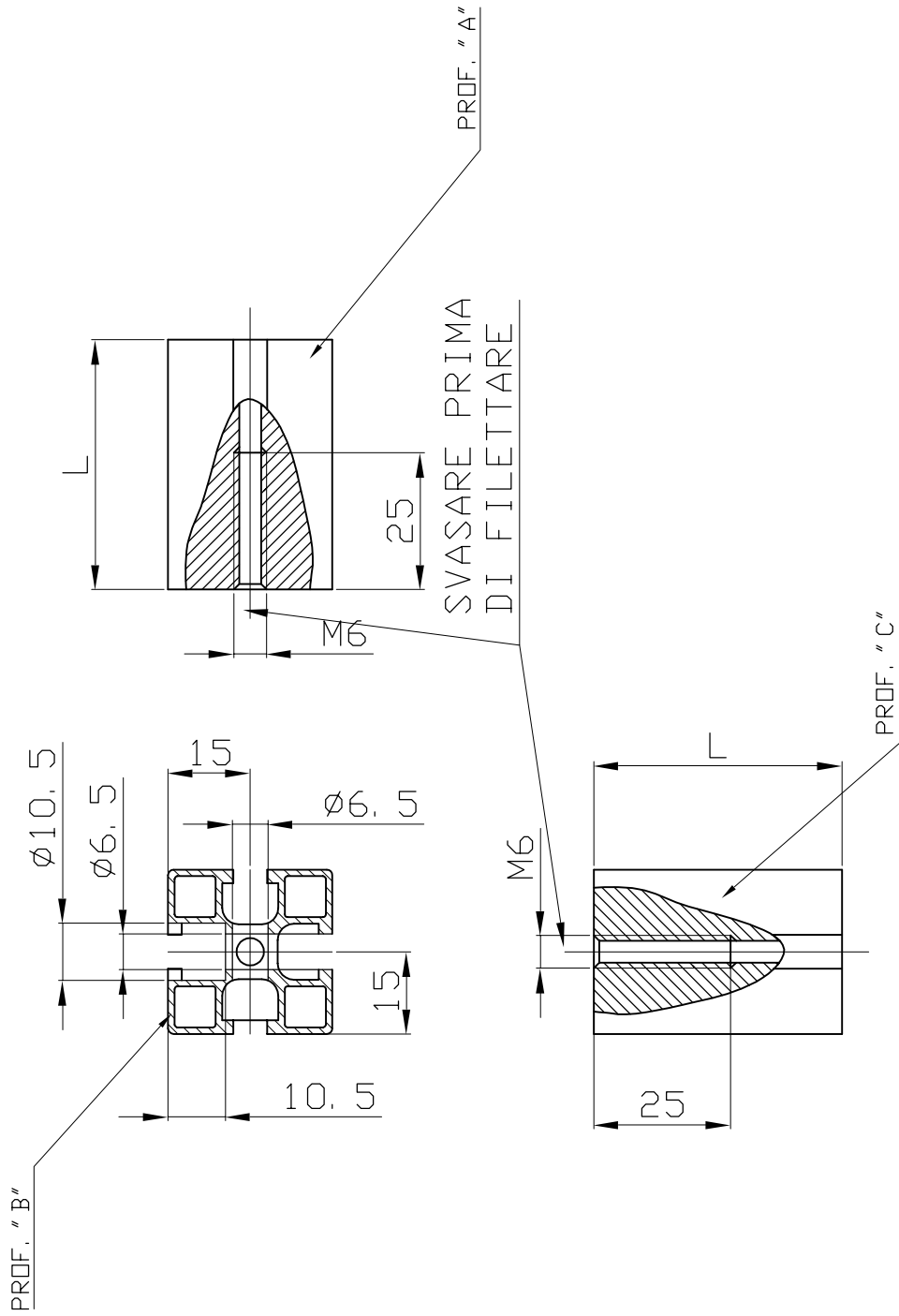
Profilo 21 x 21	
Codice	01PR06.021021.Q02N
Peso (Kg/m)	0.587
I_{xx} Cm ⁴	0.91
I_{yy} Cm ⁴	0.91
W_{xx} Cm ³	0.73
W_{yy} Cm ³	0.73
L = mm	6050
Materiale	lega 6060 T5



07.10.02

01PR06-01.0

applicazioni profili estrusi cava 6



Standard di foratura e filettatura profili 30x30

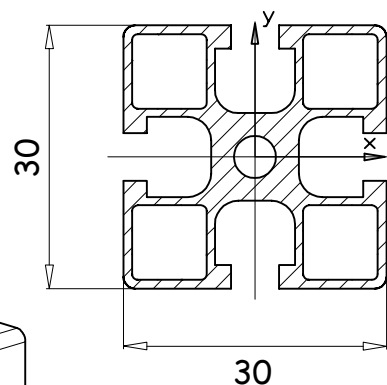
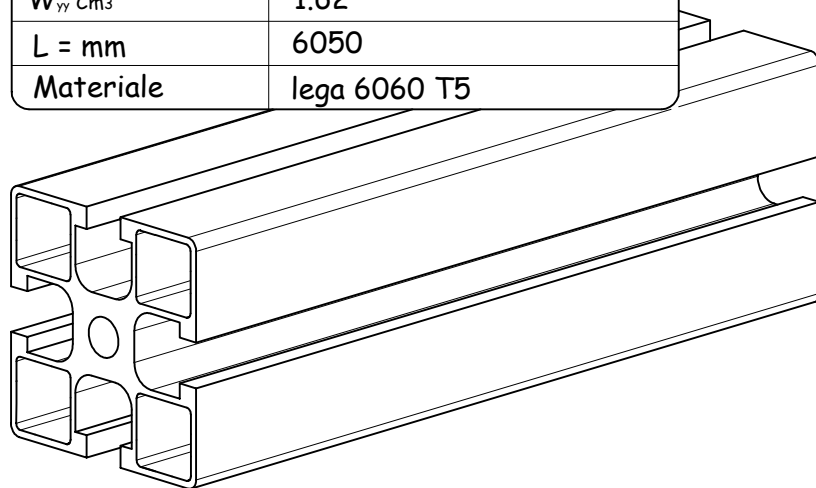
07.10.02

01PR06-01.0a

profili estrusi cava 6

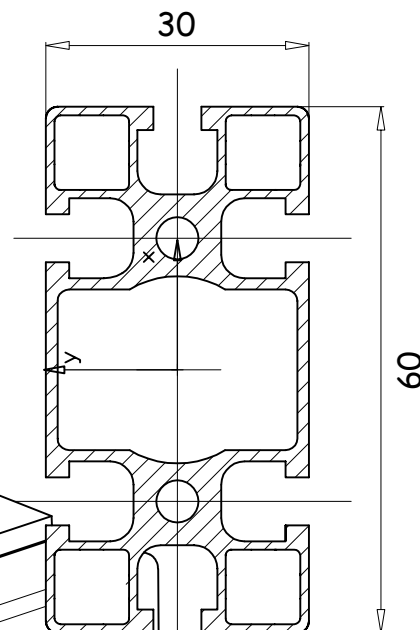
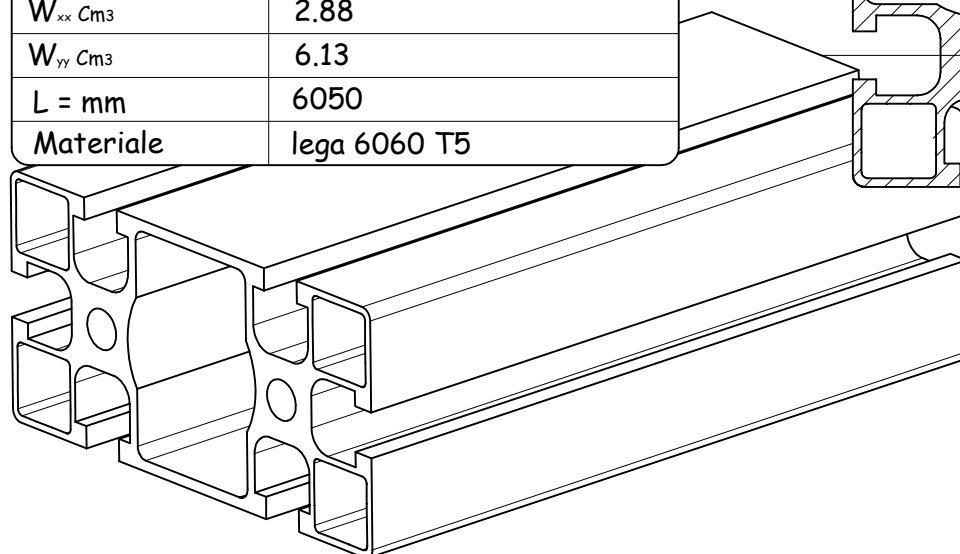
Profilo 30 x 30

Codice	01PR06.030030.Q04N
Peso (Kg/m)	0.848
I_{xx} Cm ⁴	2.43
I_{yy} Cm ⁴	2.43
W_{xx} Cm ³	1.62
W_{yy} Cm ³	1.62
L = mm	6050
Materiale	lega 6060 T5



Profilo 30 x 60

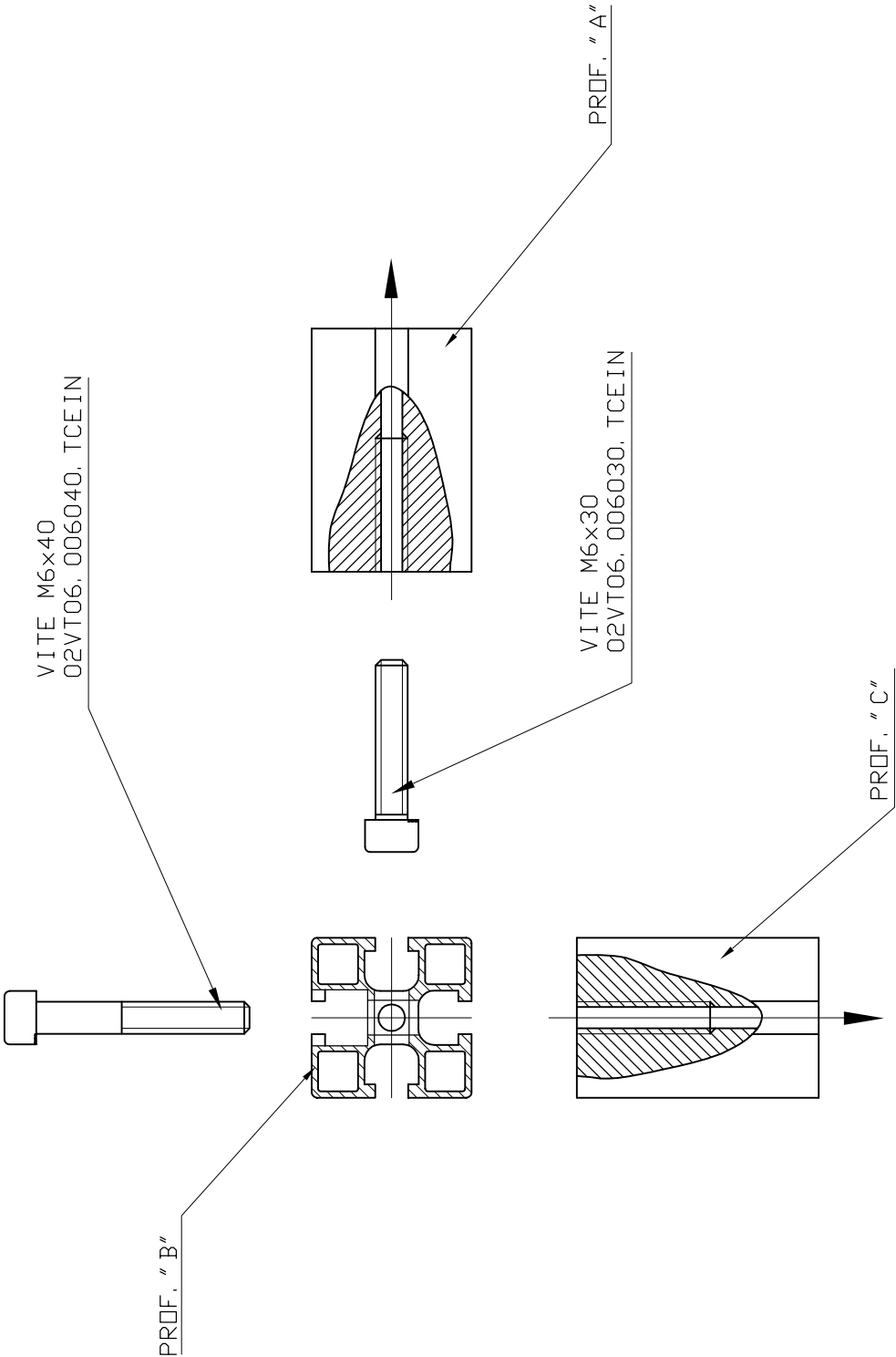
Codice	01PR06.030060.Q06N
Peso (Kg/m)	1.427
I_{xx} Cm ⁴	4.32
I_{yy} Cm ⁴	18.39
W_{xx} Cm ³	2.88
W_{yy} Cm ³	6.13
L = mm	6050
Materiale	lega 6060 T5



07.10.02

01PR06-02.0

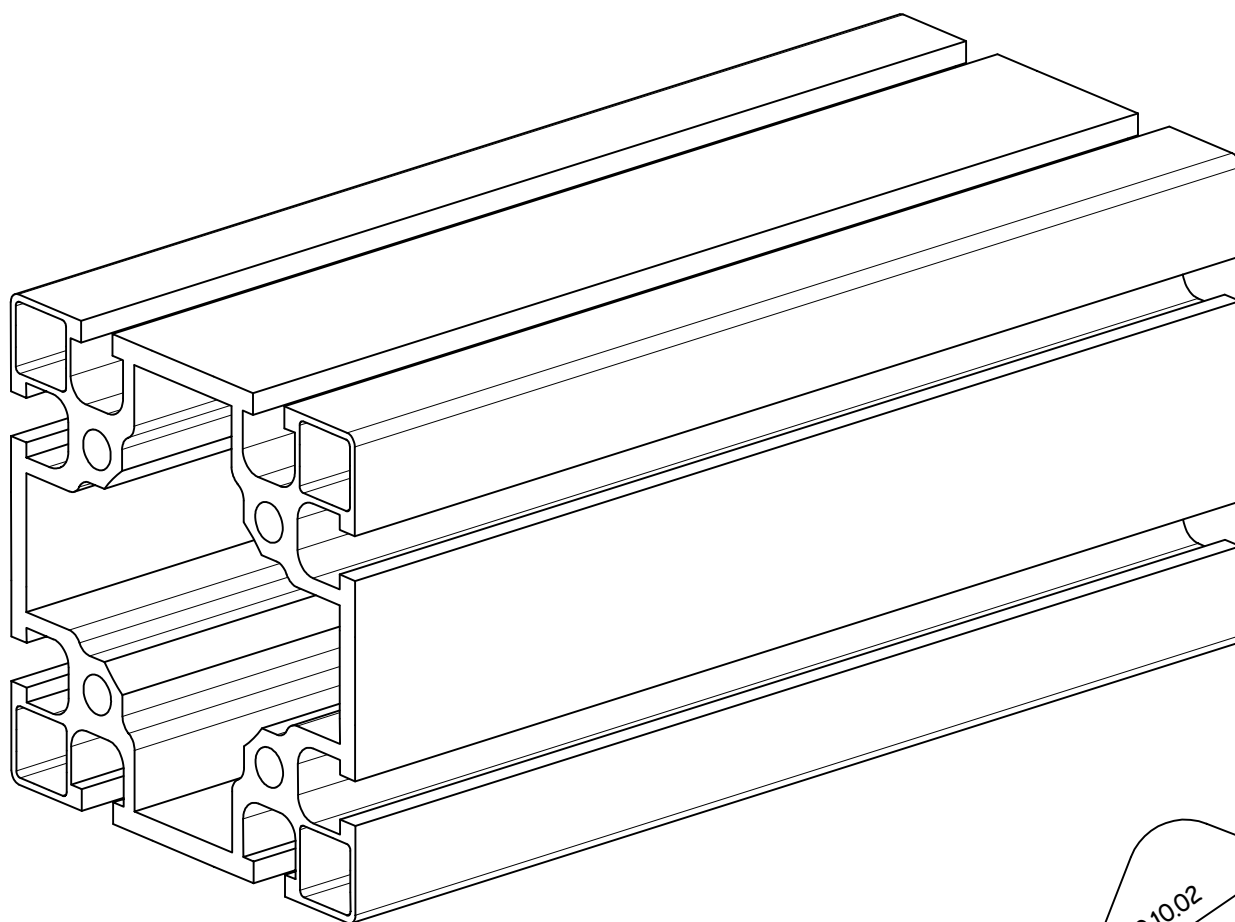
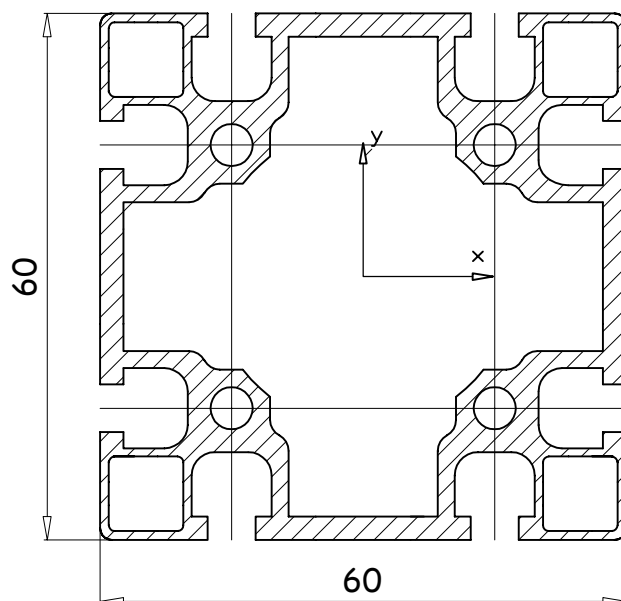
applicazioni profili estrusi cava 6



Standard di collegamento profili 30x30

profili estrusi cava 6

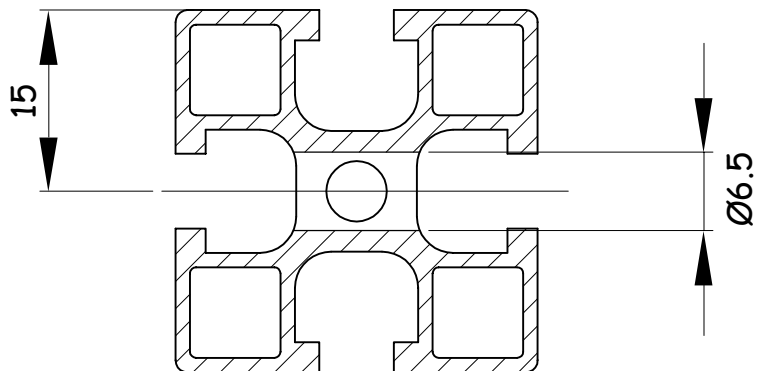
Profilo 60 x 60	
Codice	01PR06.060060.Q08L
Peso (Kg/m)	2.161
I_{xx} Cm ⁴	30.70
I_{yy} Cm ⁴	30.70
W_{xx} Cm ³	10.23
W_{yy} Cm ³	10.23
L = mm	6050
Materiale	lega 6060 T5



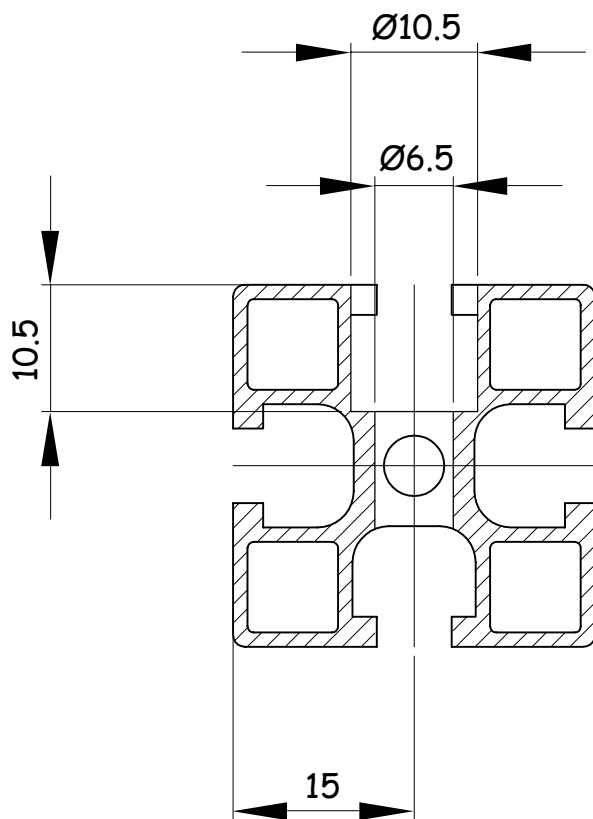
09.10.02

01PR06-03.0

applicazioni profili estrusi cava 6



Foratura passante standard su profilo 30x30

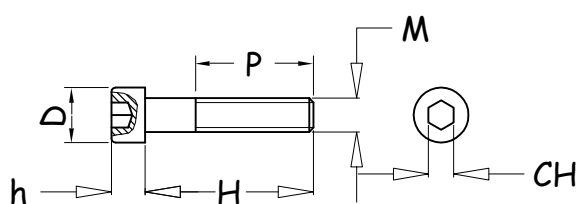


Lamatura standard su profilo 30x30

viteria cava 6

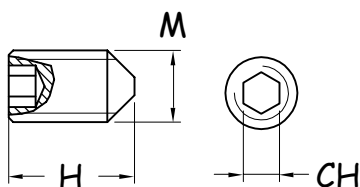
Vite testa cilindrica esagono incassato

vite	acciaio	D	h	H	P	M	CH	peso (g)	codice	note
TCEIN M6X20	8.8	9.5	6	20	18	6	4	6	02VT06.006020.TCEIN	
TCEIN M6X40	8.8	9.5	6	40	38	6	4	9	02VT06.060040.TCEIN	

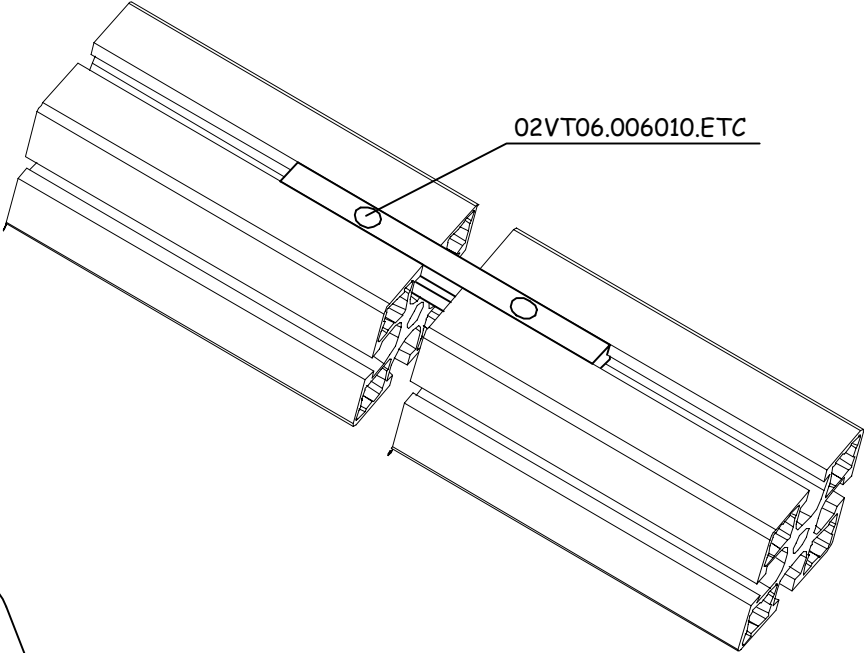
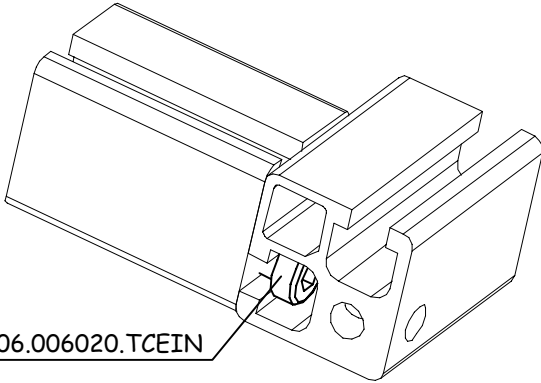
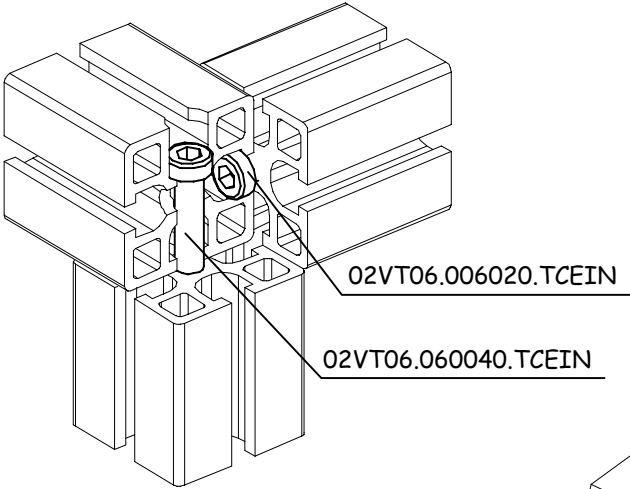


Grano estremità troncoconica

grano	acciaio	H	M	CH	peso (g)	codice	note
M6X10	10.9	10	6	4	2	02VT06.006010.ETC	



applicazioni viteria cava 6



11.10.02

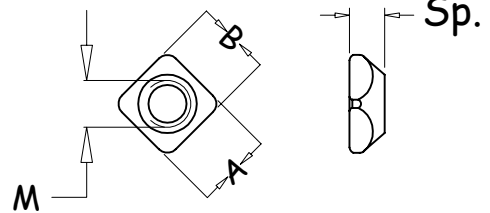
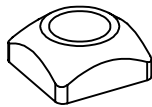
02VT06-01.0a

dadi speciali cava 6

Dado quadro smussato

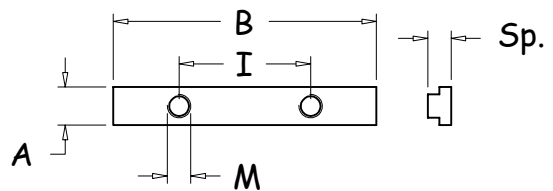
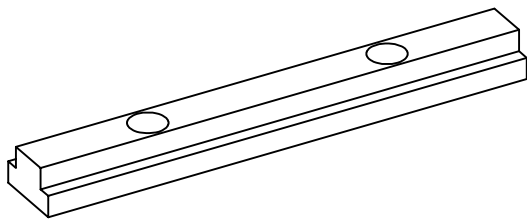
dado	A	B	Sp.	M	peso(g)	codice	note
M4 x 10	10	10	4	4	1.9	03DQ06.004010.Z	
M5 x 10	10	10	4	5	1.7	03DQ06.005010.Z	
M6 x 10	10	10	4	6	1.4	03DQ06.006010.Z	

materiale = Fe 360



Barretta a "T"

barretta	A	B	I	Sp.	M	peso(g)	codice	note
M6 x 60	10	60	30	6.5	6	21	03DQ06.006060.Z	

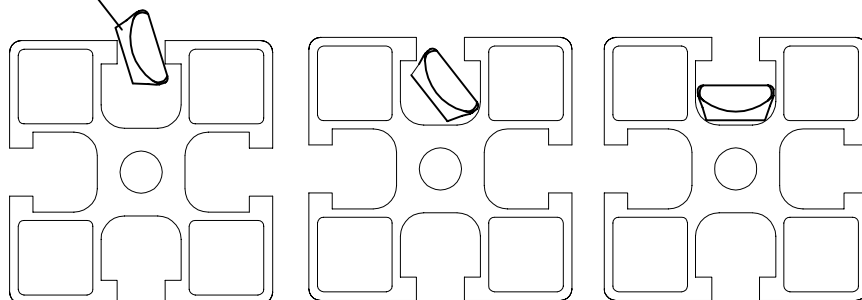


13.05.03

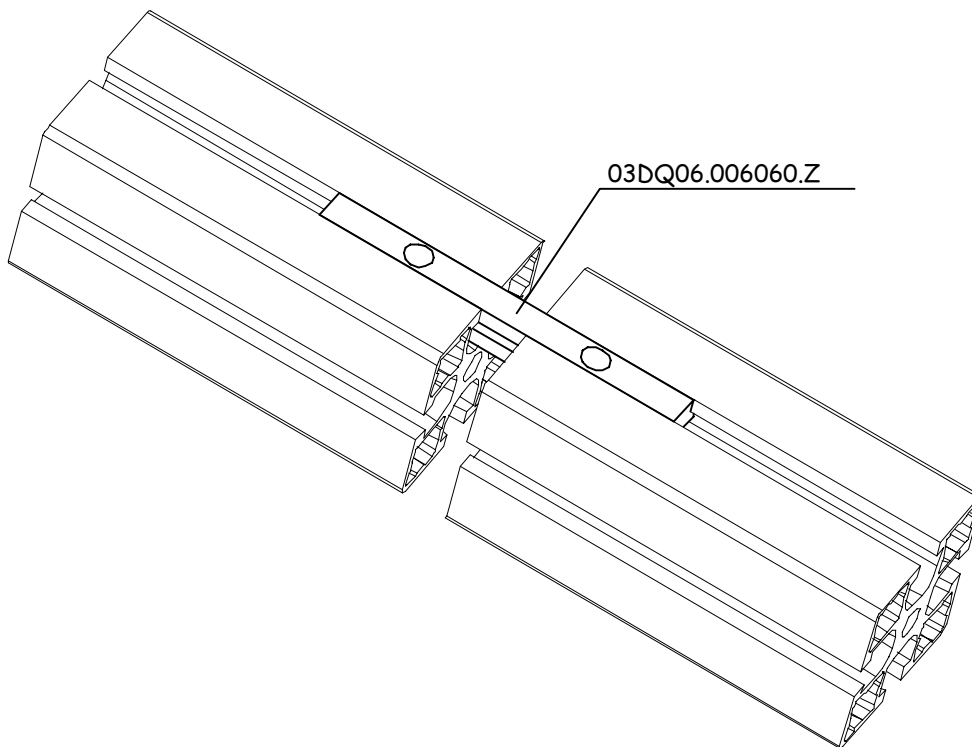
03DQ06-01.0

applicazioni dadi speciali cava 6

03DQ06.005010.Z



03DQ06.006060.Z



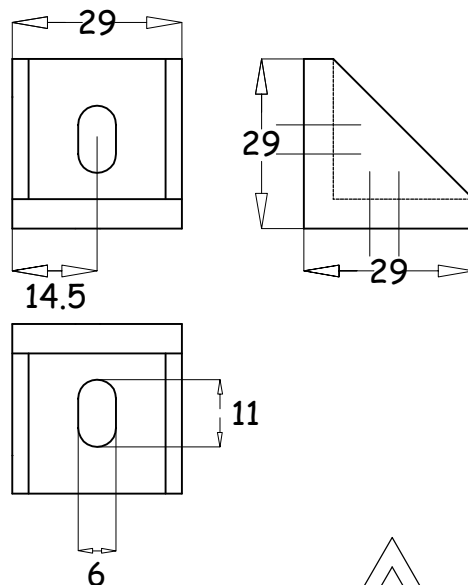
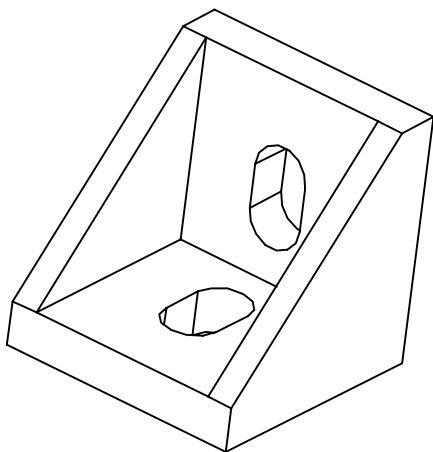
13.05.03

03DQ06-01.0a

angolari di fissaggio cava 6

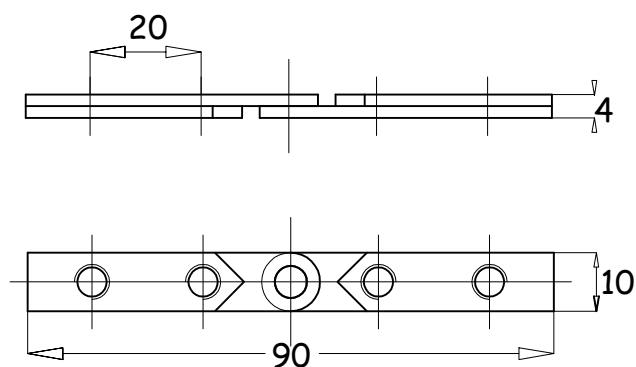
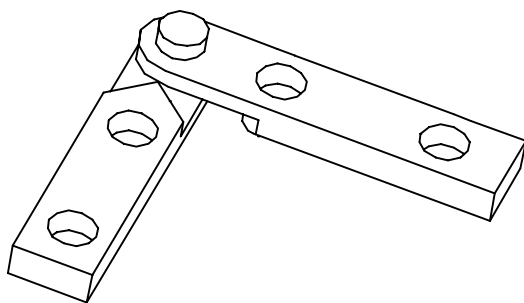
Angolare di fissaggio

angolare	materiale	peso(g)	codice	note
29 x 29	PTE	10	04AN06.029029.	



Squadretta di fissaggio laterale regolabile

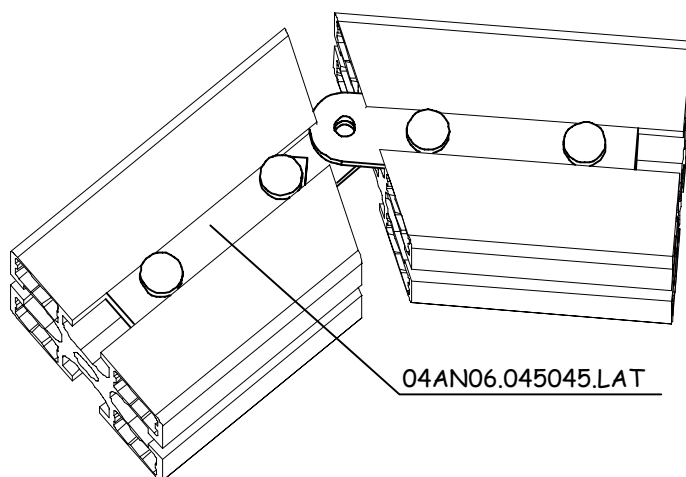
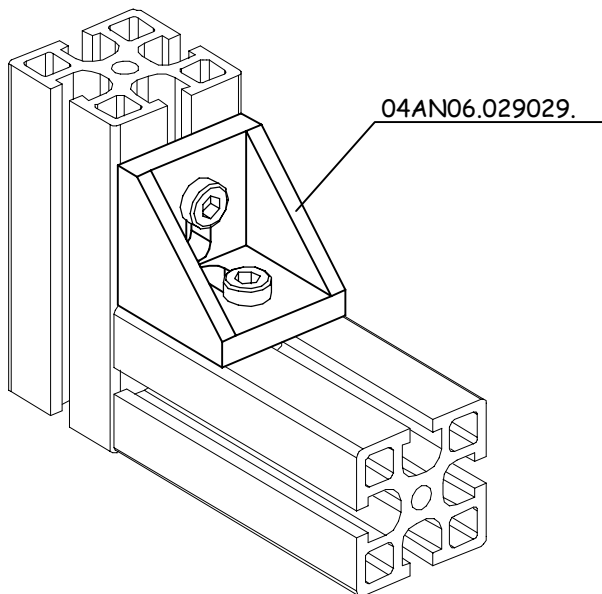
materiale	trattamento	peso(g)	codice	note
Fe 360 sp. 6mm	zincato a caldo	23	04AN06.045045.LAT	



07.10.02

04AN06-01.0

applicazioni angolari di fissaggio cava 6



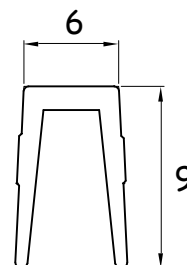
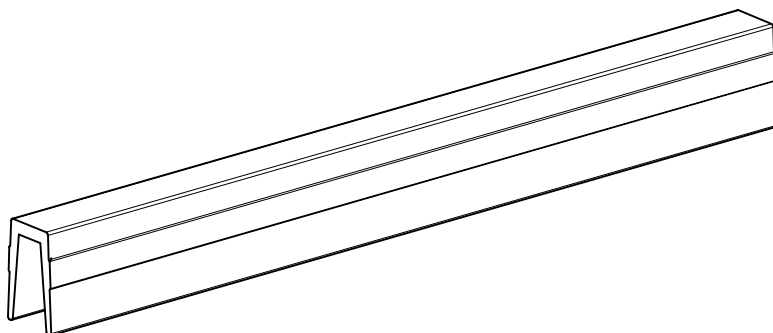
07.10.02

04AN06-01.0a

profili di chiusura cava 6

Profilo di chiusura cava PTE

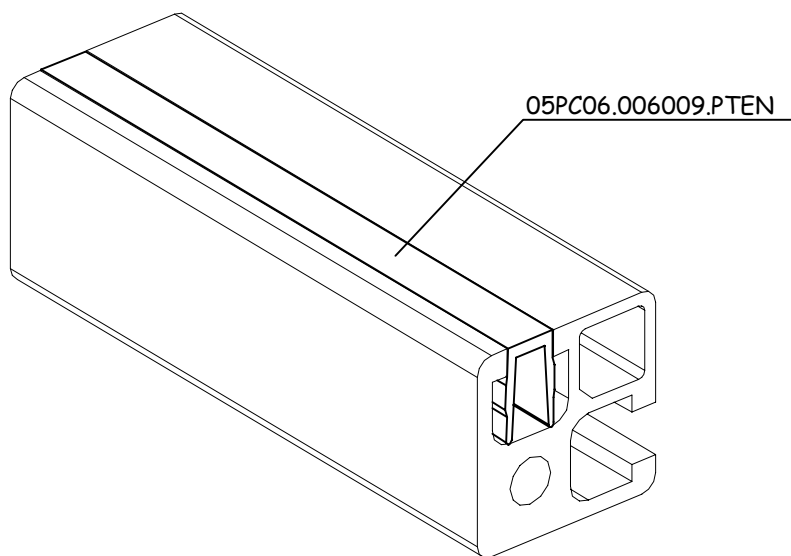
materiale	peso (g/m)	L(mm)	codice	note
PTE nero	35	2000	05PC06.006009.PTEN	



07.10.02

05PC06-01.0

applicazioni profili di chiusura cava 6



05PC06.006009.PTEN

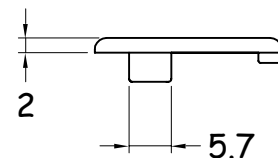
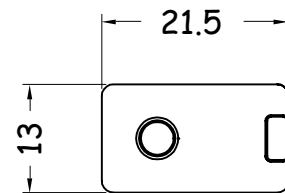
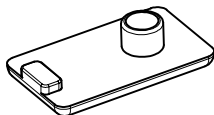
07.10.02

05PC06-01.0a

tappi di chiusura cava 6

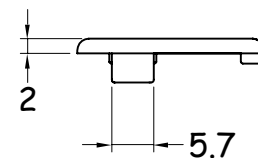
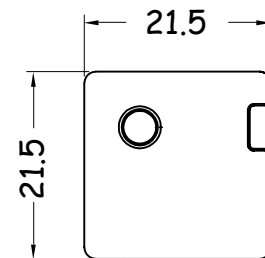
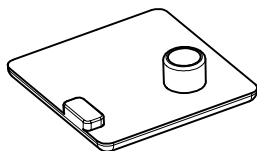
Tappo per profilo 13 x 21.5

Codice	06TC06.013021
Peso (g)	1
Materiale	PTE
colore	Nero



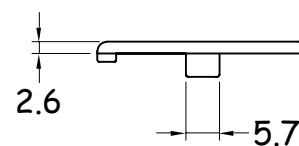
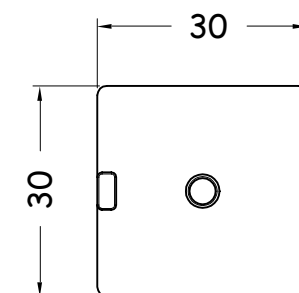
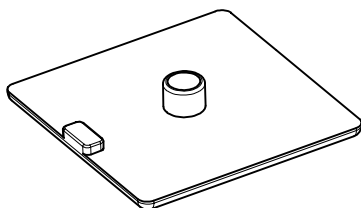
Tappo per profilo 21.5 X 21.5

Codice	06TC06.021021
Peso (g)	2
Materiale	PTE
Colore	Nero



Tappo per profilo 30 X 30

Codice	06TC06.030030
Peso (g)	3
Materiale	PTE
Colore	Nero

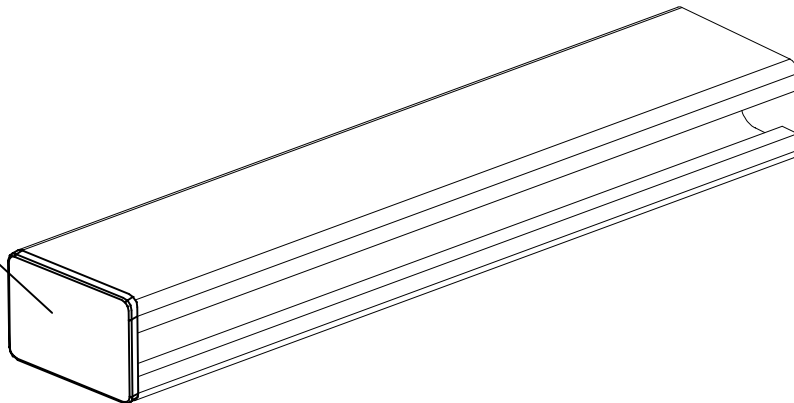


07.10.02

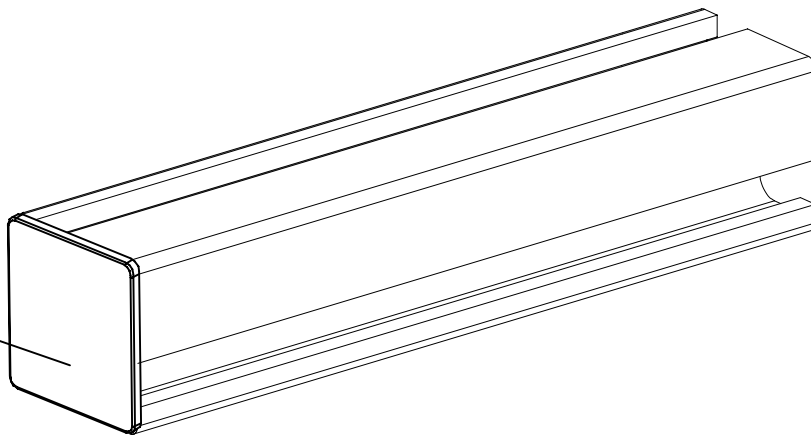
06TC06-01.0

applicazioni tappi di chiusura cava 6

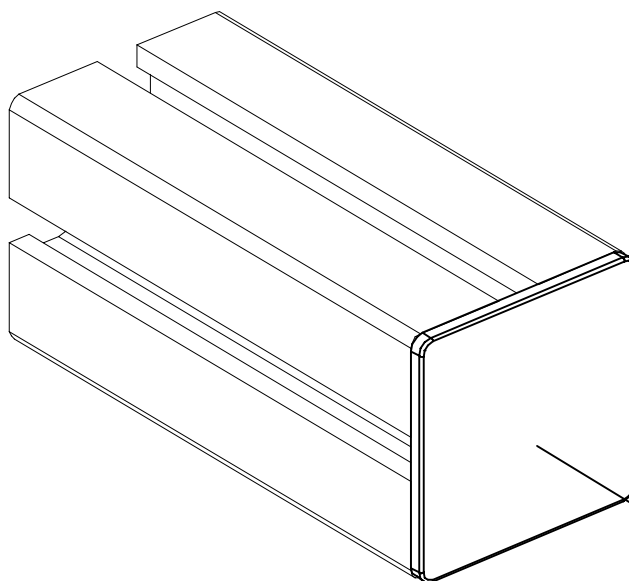
06TC06.013021



06TC06.021021



06TC06.030030



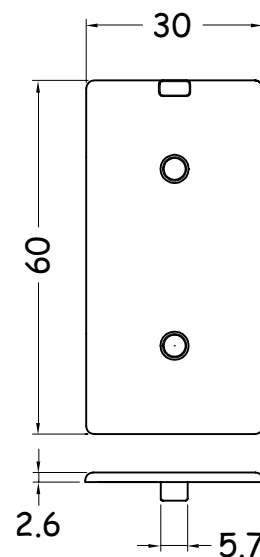
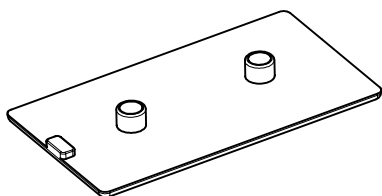
07.10.02

06TC06-01.0a

tappi di chiusura cava 6

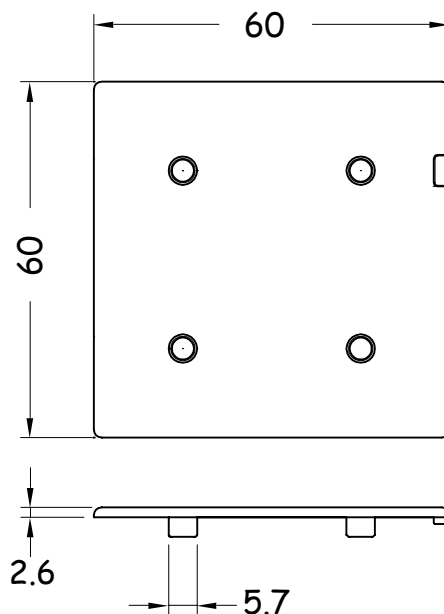
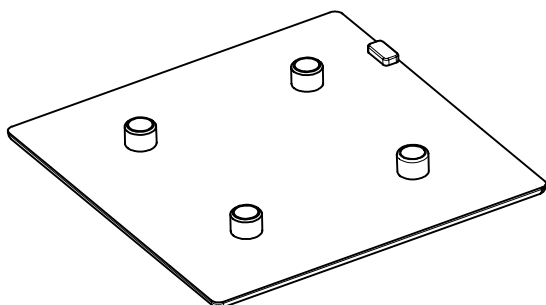
Tappo per profilo 30 X 60

Codice	06TC06.030060
Peso (g)	5
Materiale	PTE
colore	Nero



Tappo per profilo 60 X 60

Codice	06TC06.060060
Peso (g.)	10
Materiale	PTE
Colore	Nero

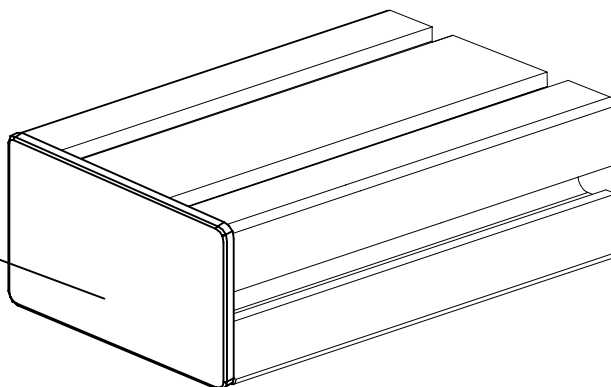


07.10.02

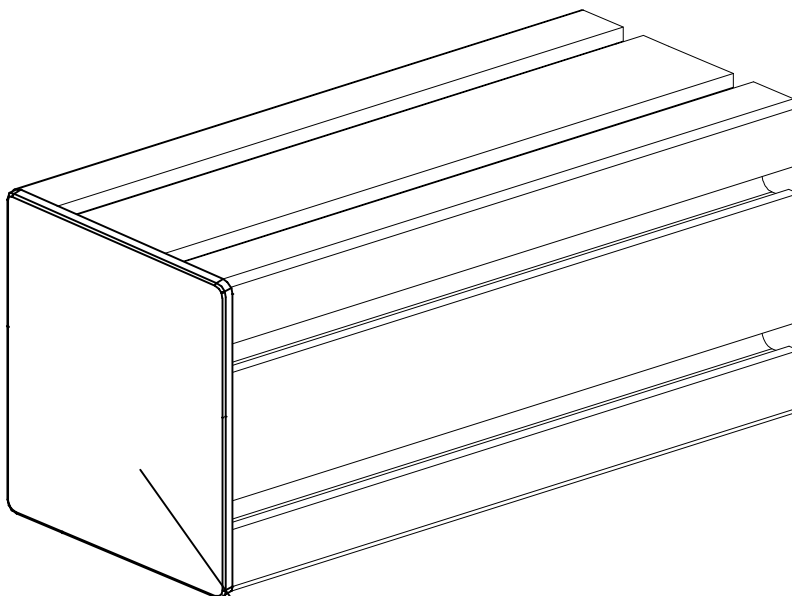
06TC06-02.0

applicazioni tappi di chiusura cava 6

06TC06.030060



06TC06.060060



07.10.02

06TC06-02.0a

pedi e staffaggi cava 6

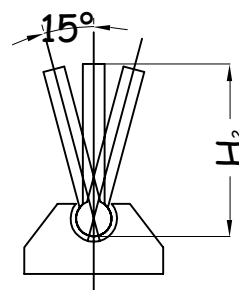
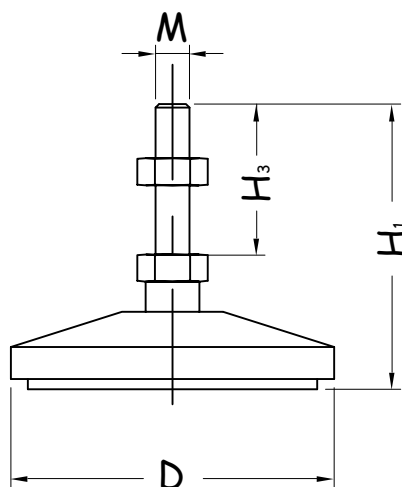
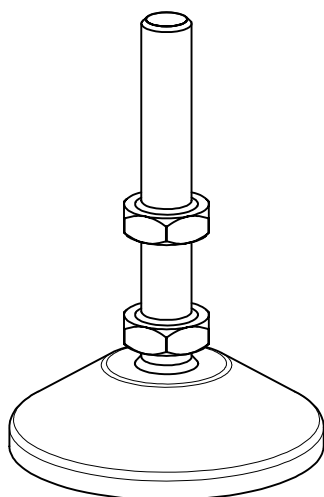
Piede snodato antivibrante

piede	D	M	H ₁	H ₂	H ₃	peso (g)	codice	note
D=40 M6x65	40	6	65	53	33	55	07PI06.006065.D40	
D=40 M8x75	40	8	75	63	42	60	07PI08.008075.D40	
D=40 M12x75	40	12	75	63	42	85	07PI08.012075.D40	
D=50 M6x65	50	6	65	53	33	60	07PI06.006065.D50	
D=50 M8x75	50	8	75	63	42	64	07PI08.008065.D50	
D=50 M12x75	50	12	75	63	42	91	07PI08.012065.D50	
D=80 M6x65	80	6	65	53	33	105	07PI06.006065.D80	
D=80 M8x70	80	8	70	63	42	111	07PI08.008070.D80	
D=80 M12x70	80	12	70	63	42	138	07PI08.012070.D80	

materiale stelo: Fe 360 zincato o INOX a richiesta

materiale piattello: PTE

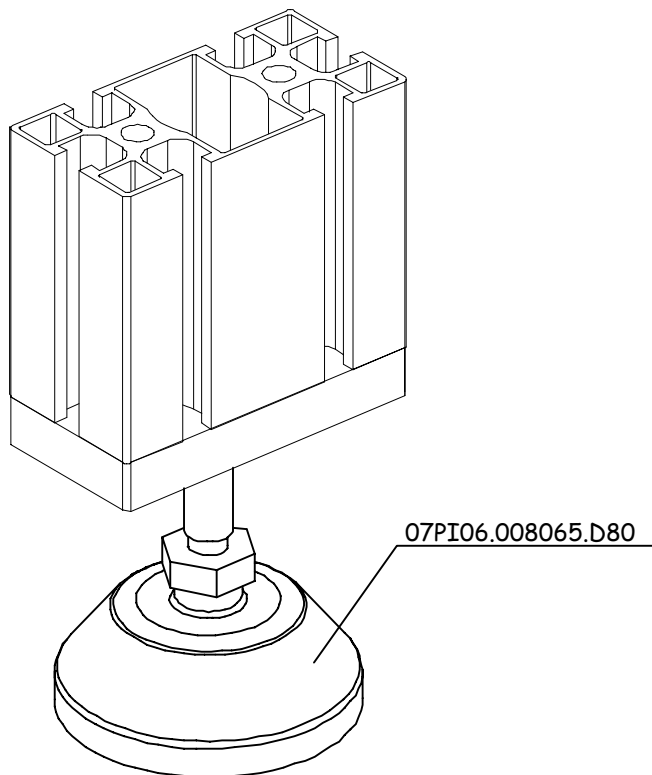
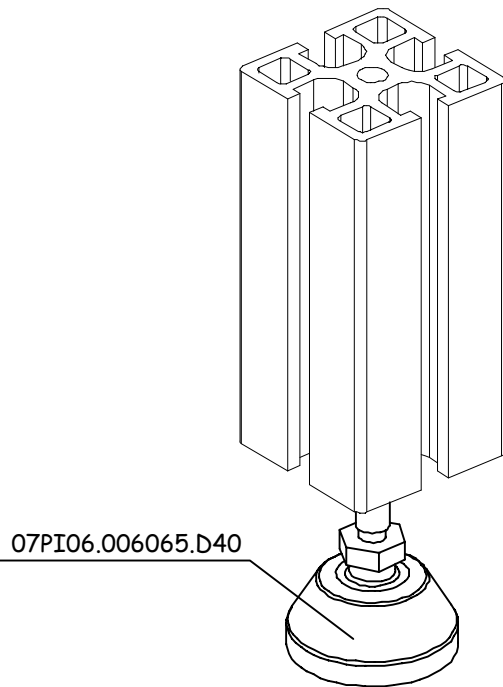
materiale antivibrante: Gomma vulcanizzata



07.10.02

07PI06-01

applicazioni piedi e staffaggi cava 6



07.10.02

07PI06-01a

pedi e staffaggi cava 6

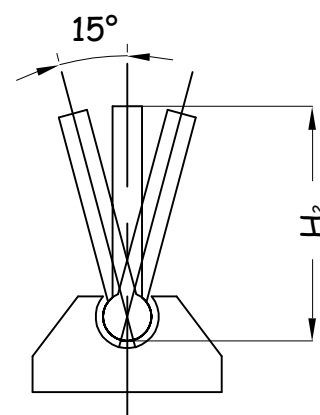
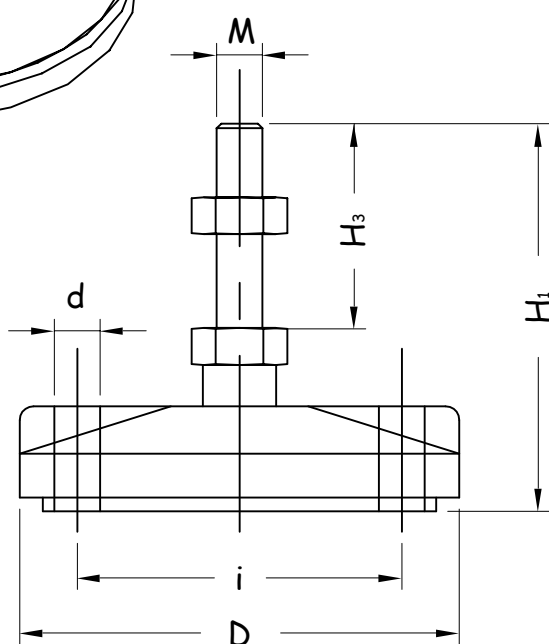
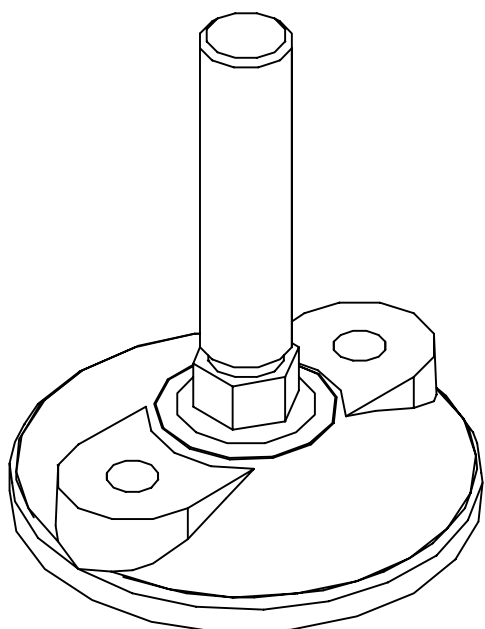
Piede snodato antivibrante con fori di fissaggio a terra

piede	D	M	H ₁	H ₂	H ₃	i	d	peso (g)	codice	note
D=80 M6x65	80	6	65	53	33	55	8.5	105	07PI06.006065.D80F	
D=80 M8x70	80	8	70	63	42	55	8.5	118	07PI08.008070.D80F	
D=80 M12x70	80	12	70	63	42	55	8.5	145	07PI08.012070.D80F	

materiale stelo: Fe 360 zincato o INOX a richiesta

materiale piattello: PTE

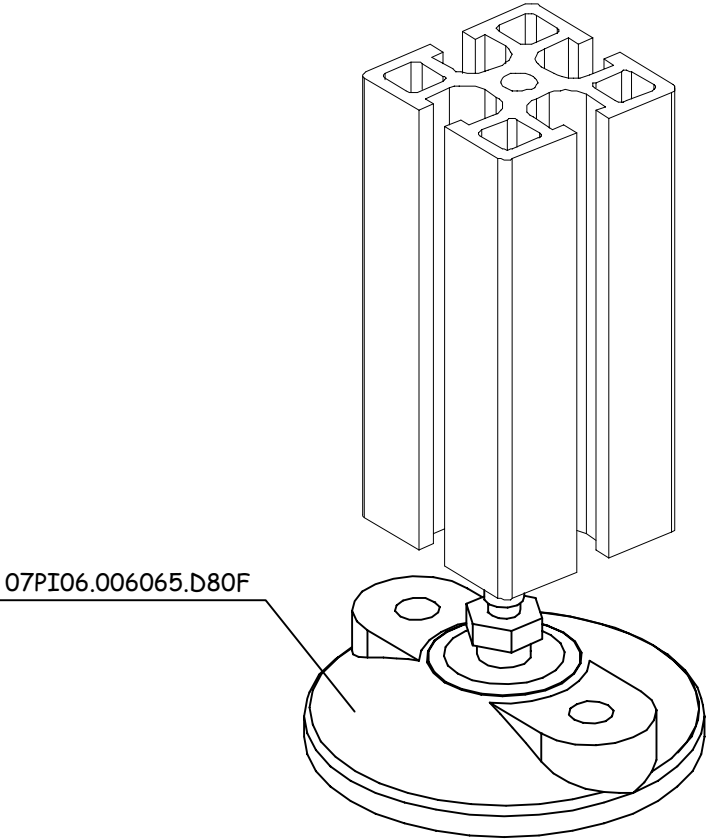
materiale antivibrante: Gomma vulcanizzata



07.10.02

07PI06-02

applicazioni piedi e staffaggi cava 6



07.10.02

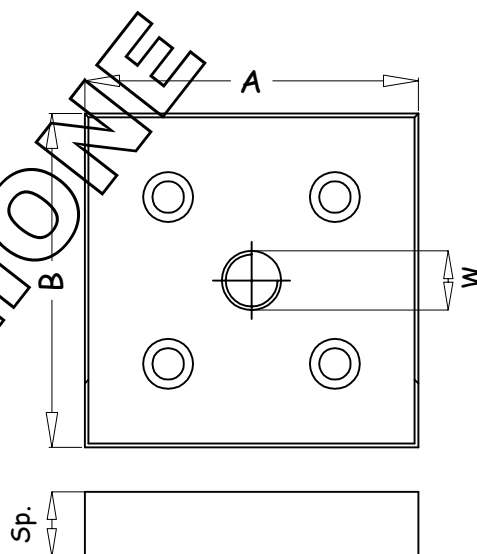
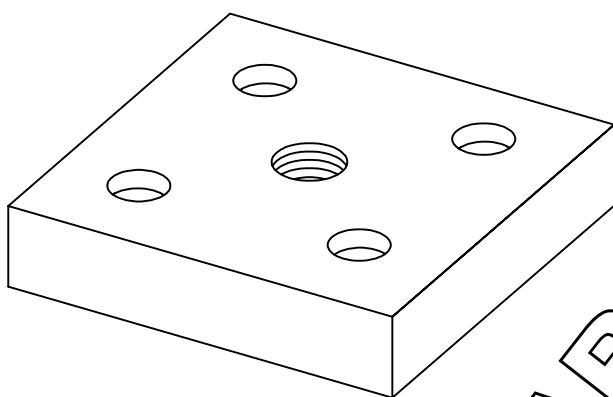
07PI06-02a

piedi e staffaggi cava 6

Basetta per piedi e golfari

basetta	A	B	Sp.	M	peso (g)	codice	Euro
basetta M8	30	60	10	8	--	07PI06.030060.M8	
basetta M12	30	60	10	12	--	07PI06.030060.M12	
basetta M8	60	60	10	8	--	07PI06.060060.M8	
basetta M12	60	60	10	12	--	07PI06.060060.M12	

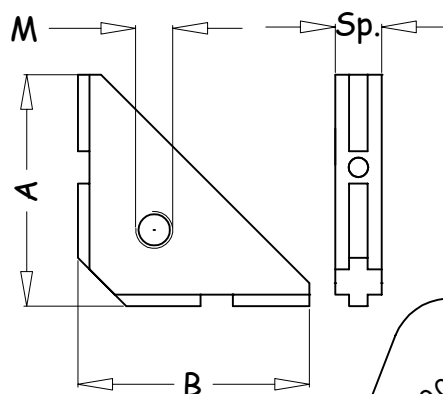
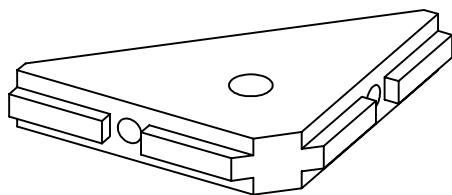
Materiale e trattamento = alluminio sabbiato



Saetta di rinforzo angolare

saetta	A	B	Sp.	M	peso (g)	codice	Euro
saetta M8	60	60	15	8	--	07PI06.100100.M8	
saetta M12	60	60	15	12	--	07PI06.100100.M12	

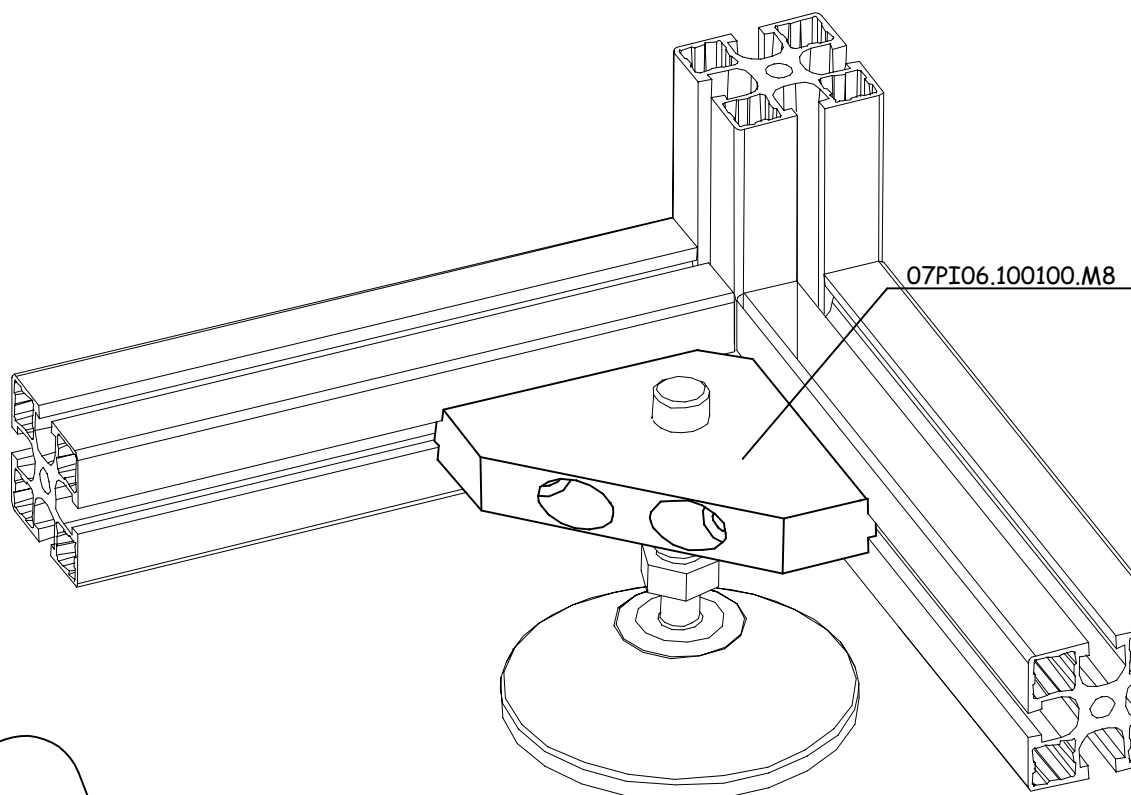
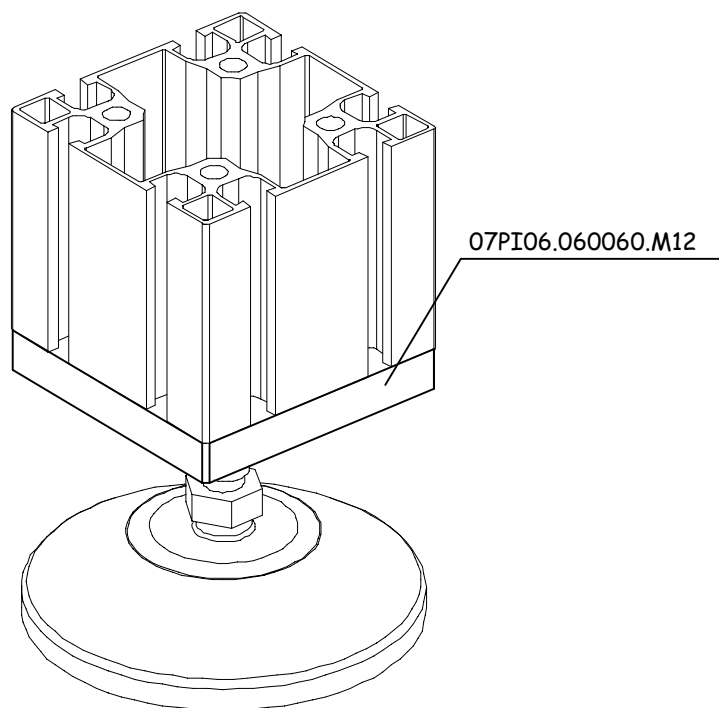
Materiale e trattamento = alluminio sabbiato



10.10.02

07PI06-03.0

applicazioni piedi e staffaggi cava 6



10.10.02

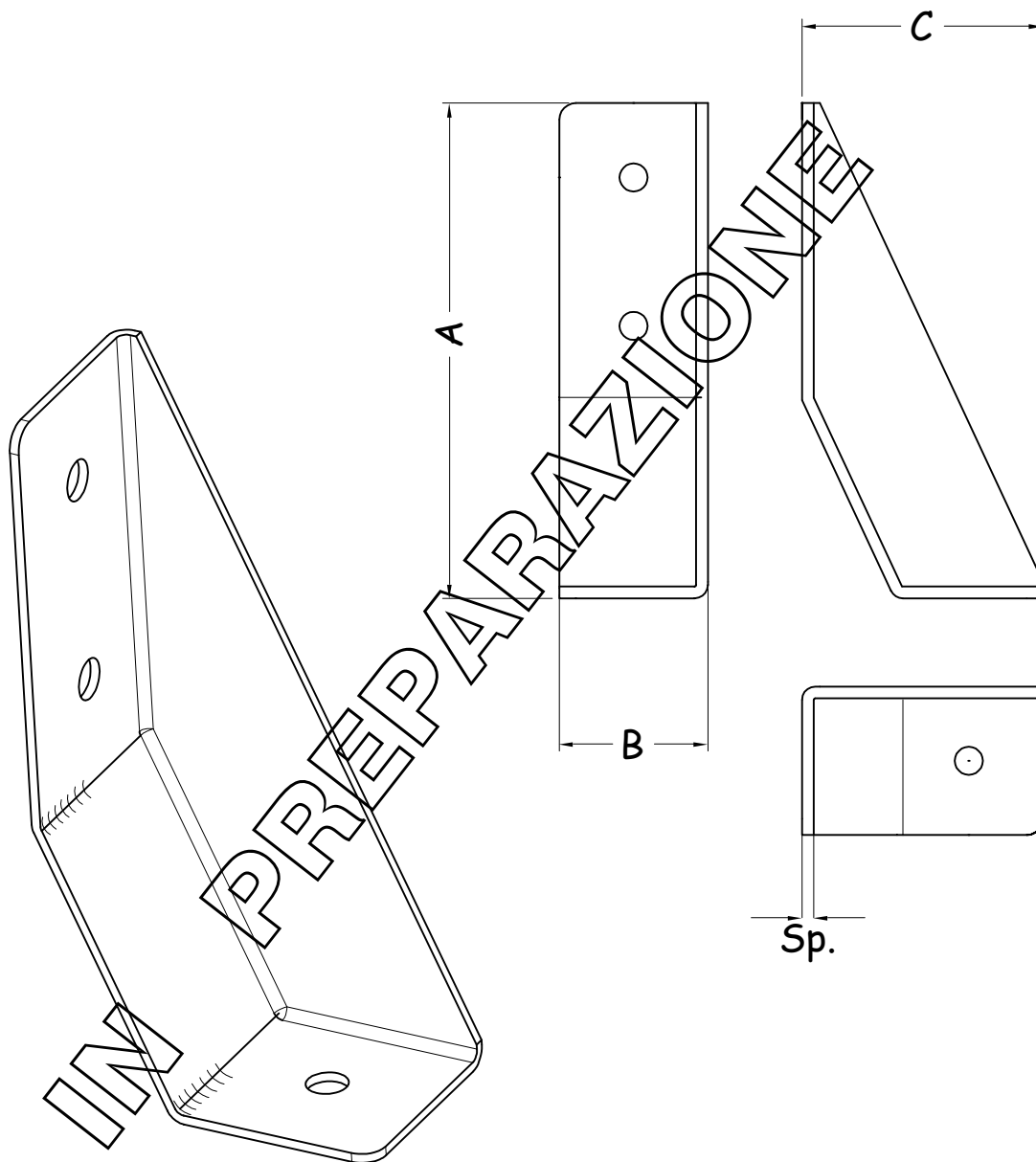
07PI06-03.0a

piedi e staffaggi cava 6

Staffa singola di ancoraggio a terra

A	B	C	Sp.	peso (g)	codice	note
100	30	--	2	--	07PI06.030030.H100S	

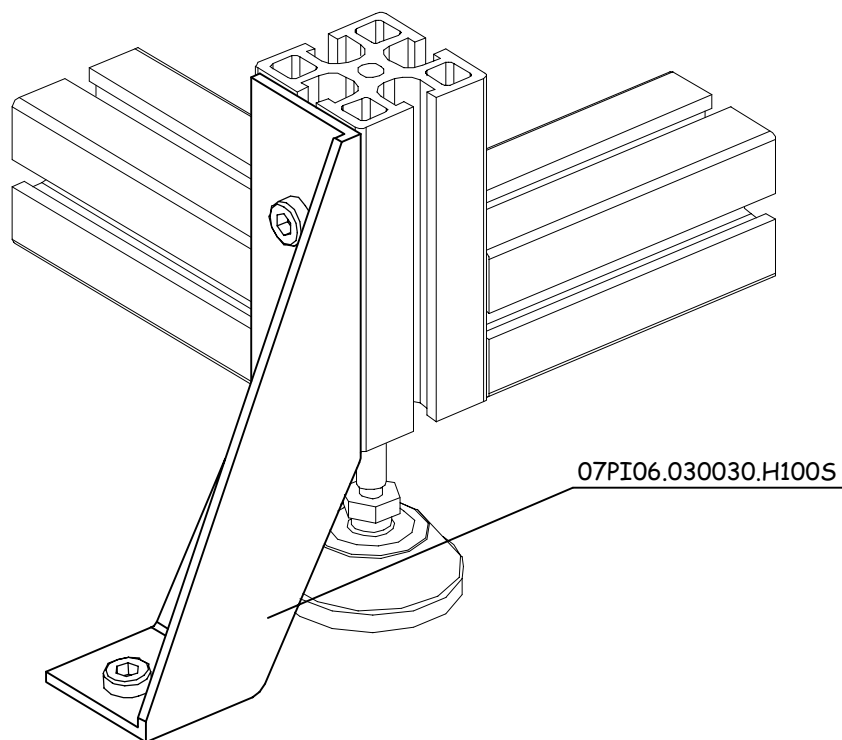
Materiale e trattamento: Fe 360 vernicito



07.10.02

07PI06-04.0

applicazioni piedi e staffaggi cava 6



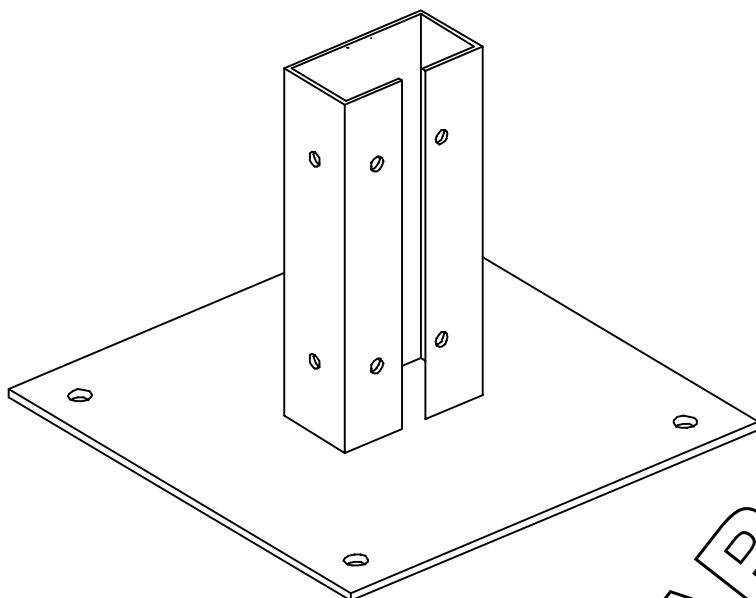
07.10.02

07PI06-04.0a

piedi e staffaggi cava 6

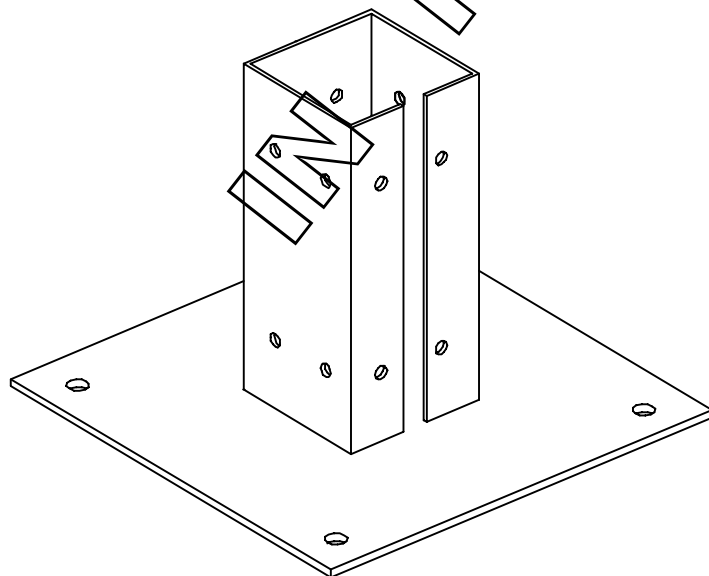
Basetta di ancoraggio a terra per profilo 30x60

Materiale e trattamento	A	B	C	Sp.	Codice	note
Fe 360 verniciato	---	---	---	2	07PI06.030060.---	



Basetta di ancoraggio a terra per profilo 60x60

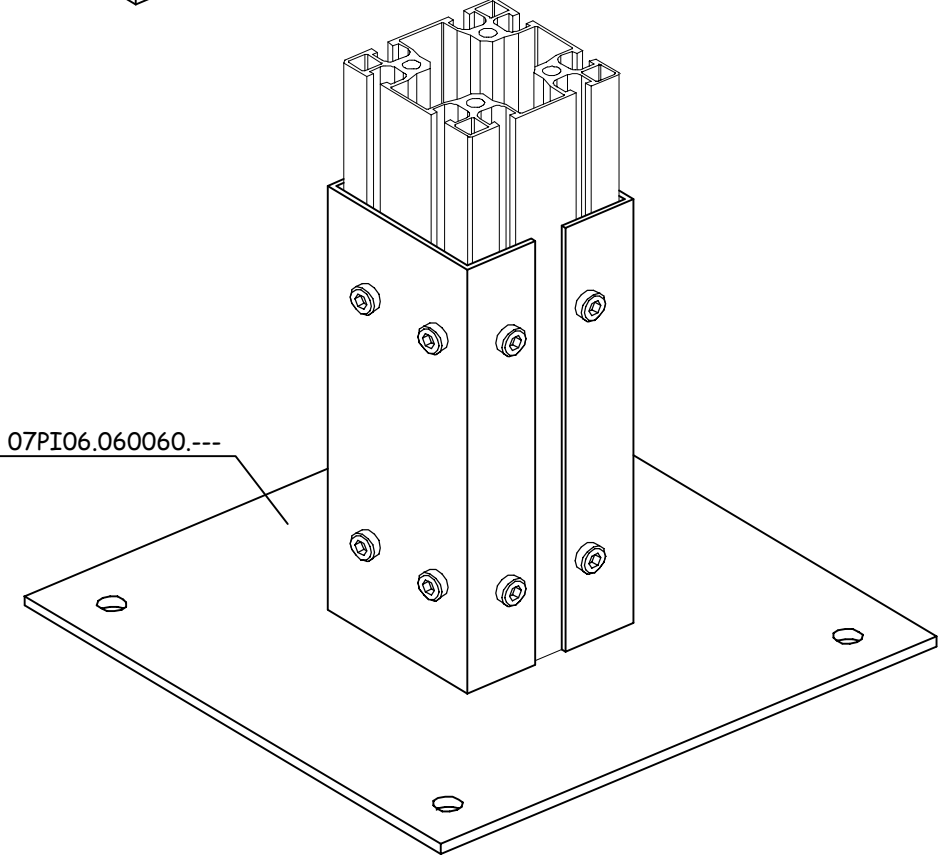
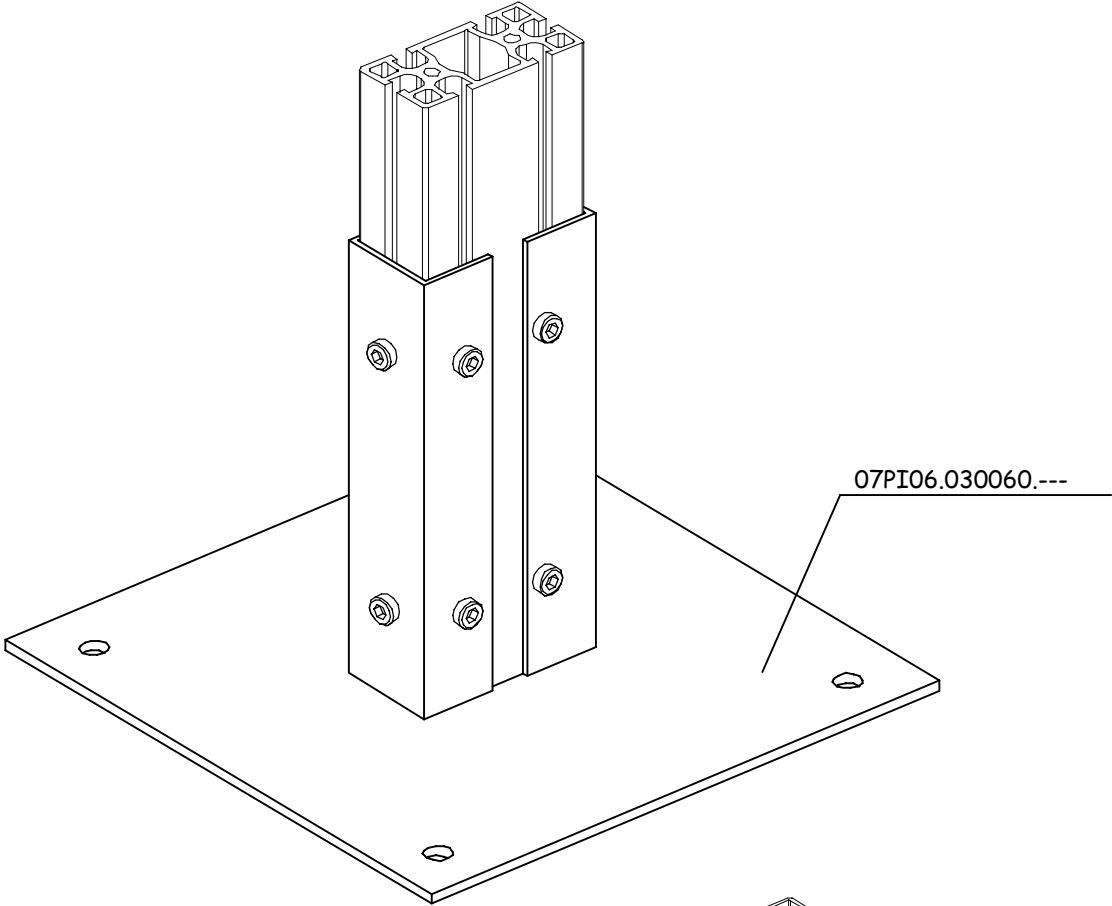
Materiale e trattamento	A	B	C	Sp.	Codice	note
Fe 360 verniciato	---	---	---	2	07PI06.060060.---	



07.10.02

07PI06-05.0

applicazioni piedi e staffaggi cava 6

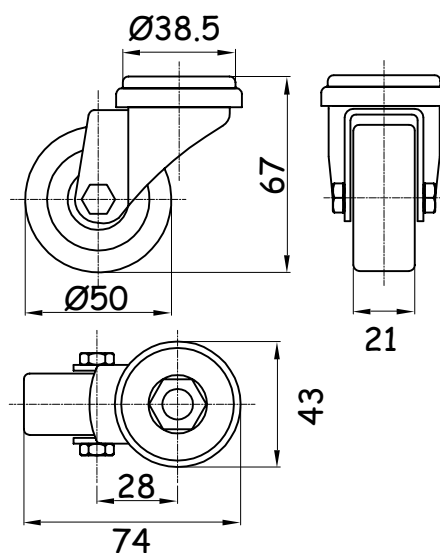
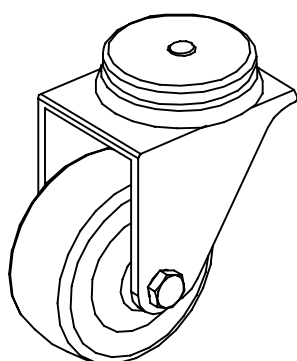


07.10.02
07PI06-05.0a

ruote cava 6

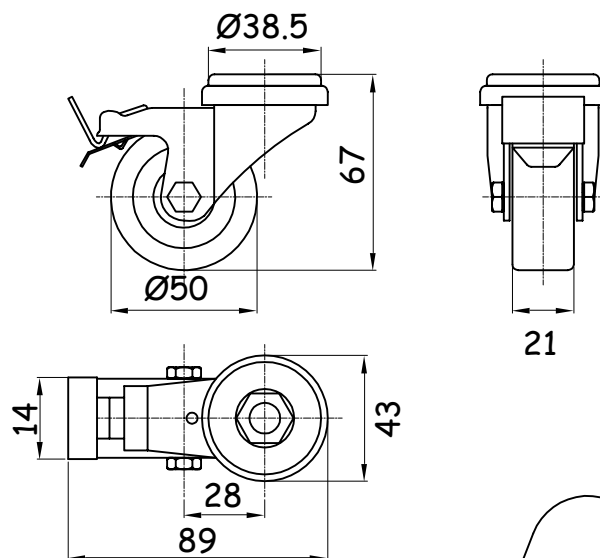
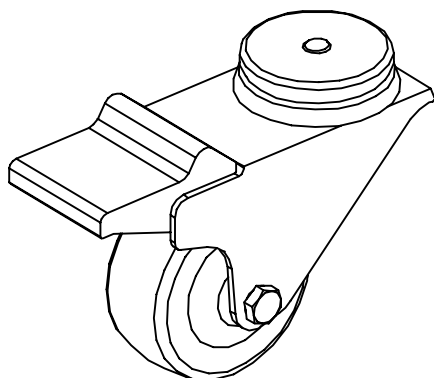
Ruota piroettante con foro centrale

ruota	peso (g)	codice	note
ruota Ø 50	195	08RU08.008000.D050	



Ruota piroettante con foro centrale e freno

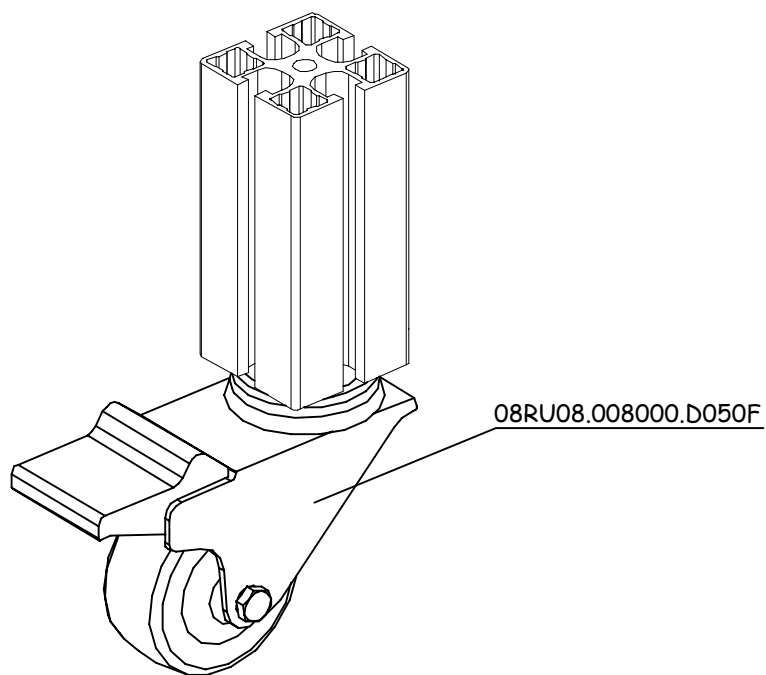
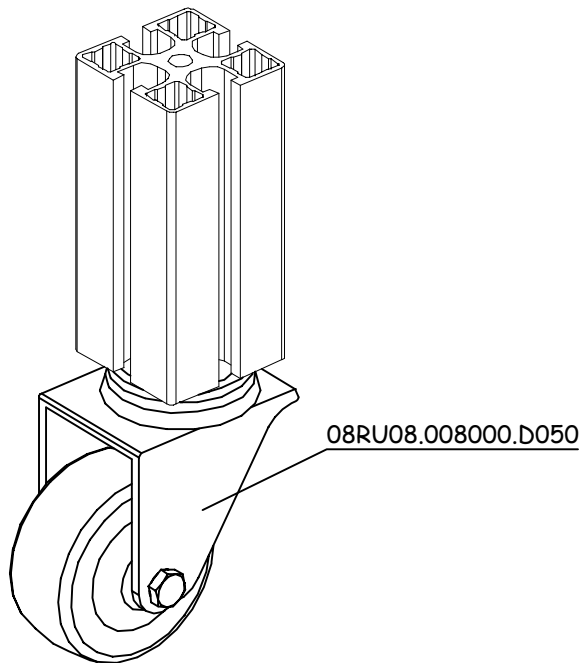
ruota	peso (g)	codice	note
ruota Ø 50	218	08RU08.008000.D050F	



07.10.02

08RU06-01.0

applicazioni ruote cava 6



07.10.02

08RU06-01.0a