



Alternatore tachimetrico AT101-AT202-AT202.F115

Three phase tachogenerator AT101-AT202-AT202.F115

24V/1000rpm

Data sheet -----

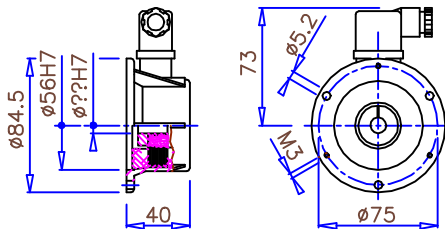
Isolamento classe E – protezione: IP54
Class E insulation – protection: IP54

Polarità indipendente dal senso di rotazione – senso di rotazione reversibile
Polarity independent of sense of rotation – direction of rotation reversible

Rotore magneti permanenti alnico 8 poli – uscita in c.c. con raddrizzatore incorporato
Alnico permanent magnet rotor 8 poles – d.c. output with embodied rectifier

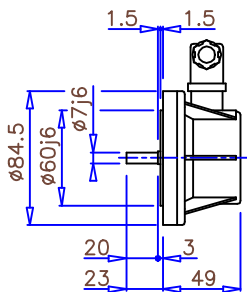
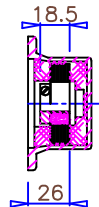


TIPO / TYPE	Unità / Units	AT101	AT202	AT202.F115
Tensione c.c. a vuoto a 1000min ⁻¹ / No load d.c. voltage at 1000 min ⁻¹	Volts		24 ±7%	
Resistenza di fase a 20°C / Phase resistance at 20°C	Ohm		180 ±10%	
Frequenza a 1000min ⁻¹ / Frequency at 1000 min ⁻¹	Hz		66.6	
Armonica a 1000min ⁻¹ / Harmonic at 1000 min ⁻¹	Hz		400	
Corrente nominale / Rated current	mA		4	
Corrente termica massima / Max. thermic current	mA		50	
Ondulazione residua / Residual ripple	%		~ 4	
Errore di linearità / Linearity error	%		1 max.	
Massima velocità / Max. operating speed	min ⁻¹		10000	
Momento di inerzia / Inertial moment	gcm ²		35	
Temperatura di lavoro / Working temperature	C°		-10 ÷ +80	
Statore trifase / Three phase stator	— —		33	
Peso / Weight	Gr	380	480	670

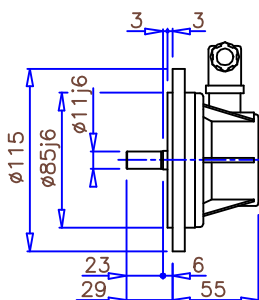


AT101

**QUOTE MONTAGGIO ROTORE
ROTOR ASSEMBLY MEASURES**



AT202



AT202.F115